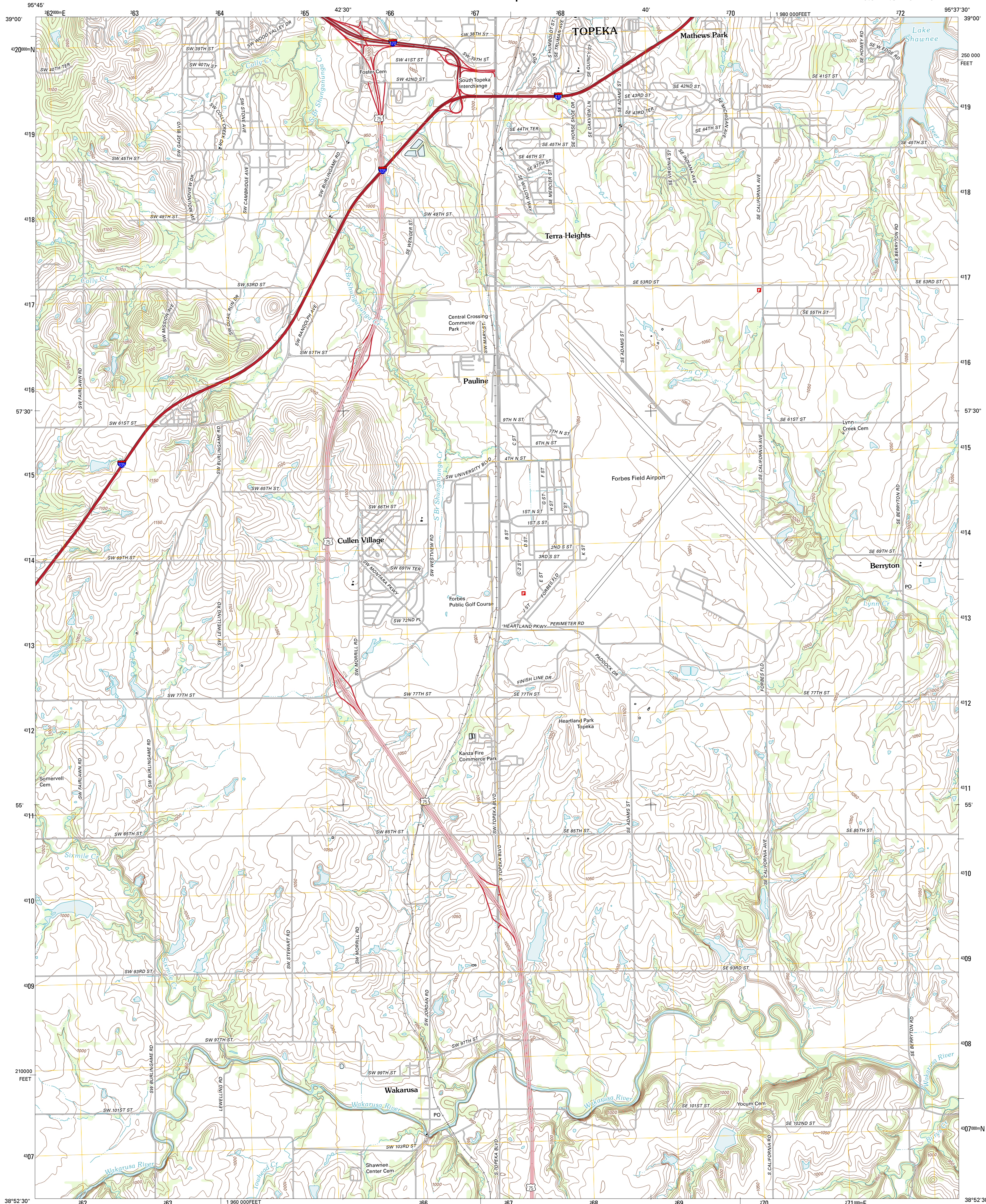




U.S. DEPARTMENT OF THE INTERIOR  
U. S. GEOLOGICAL SURVEY

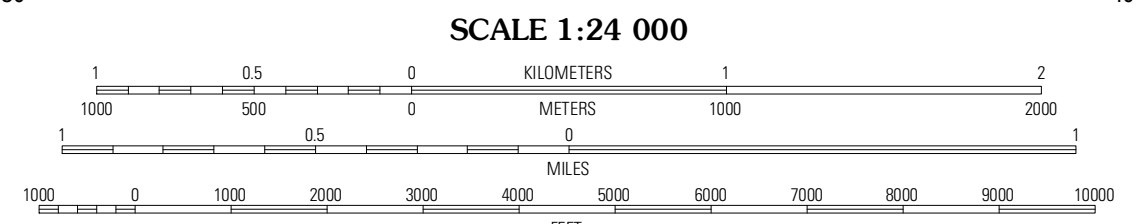
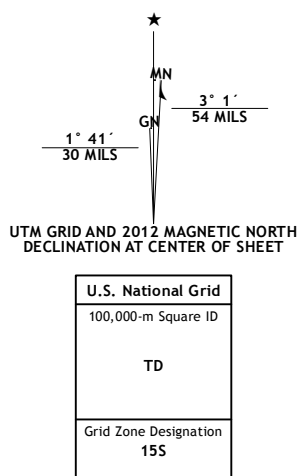


WAKARUSA QUADRANGLE  
KANSAS-SHAWNEE CO.  
7.5-MINUTE SERIES



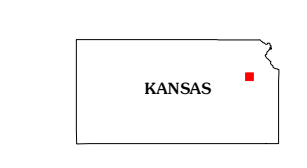
Produced by the United States Geological Survey  
North American Datum of 1983 (NAD83)  
World Geodetic System of 1984 (WGS84). Projection and  
1 000-meter grid: Universal Transverse Mercator, Zone 15S  
10 000-foot ticks: Kansas Coordinate System of 1983 (north zone)

Imagery.....NAIP, June 2010  
Roads.....©2006-2011 TomTom  
Names.....©2012  
Hydrography.....National Hydrography Dataset, 2010  
Contours.....National Elevation Dataset, 2008  
Boundaries.....Census, IBWC, IBC, USGS, 1972 - 2012



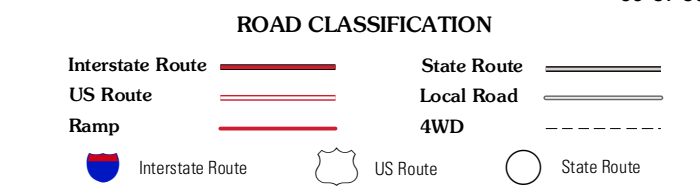
CONTOUR INTERVAL 10 FEET  
NORTH AMERICAN VERTICAL DATUM OF 1988

This map was produced to conform with the National Geospatial Program US Topo Product Standard, 2011. A metadata file associated with this product is draft version 0.6.4



QUADRANGLE LOCATION

Silver Lake	Topeka	Grantville
Auburn	Wakarusa	Richland
Burlingame	Carbondale	Overbrook



WAKARUSA, KS  
2012

ADJOINING 7.5 QUADRANGLES