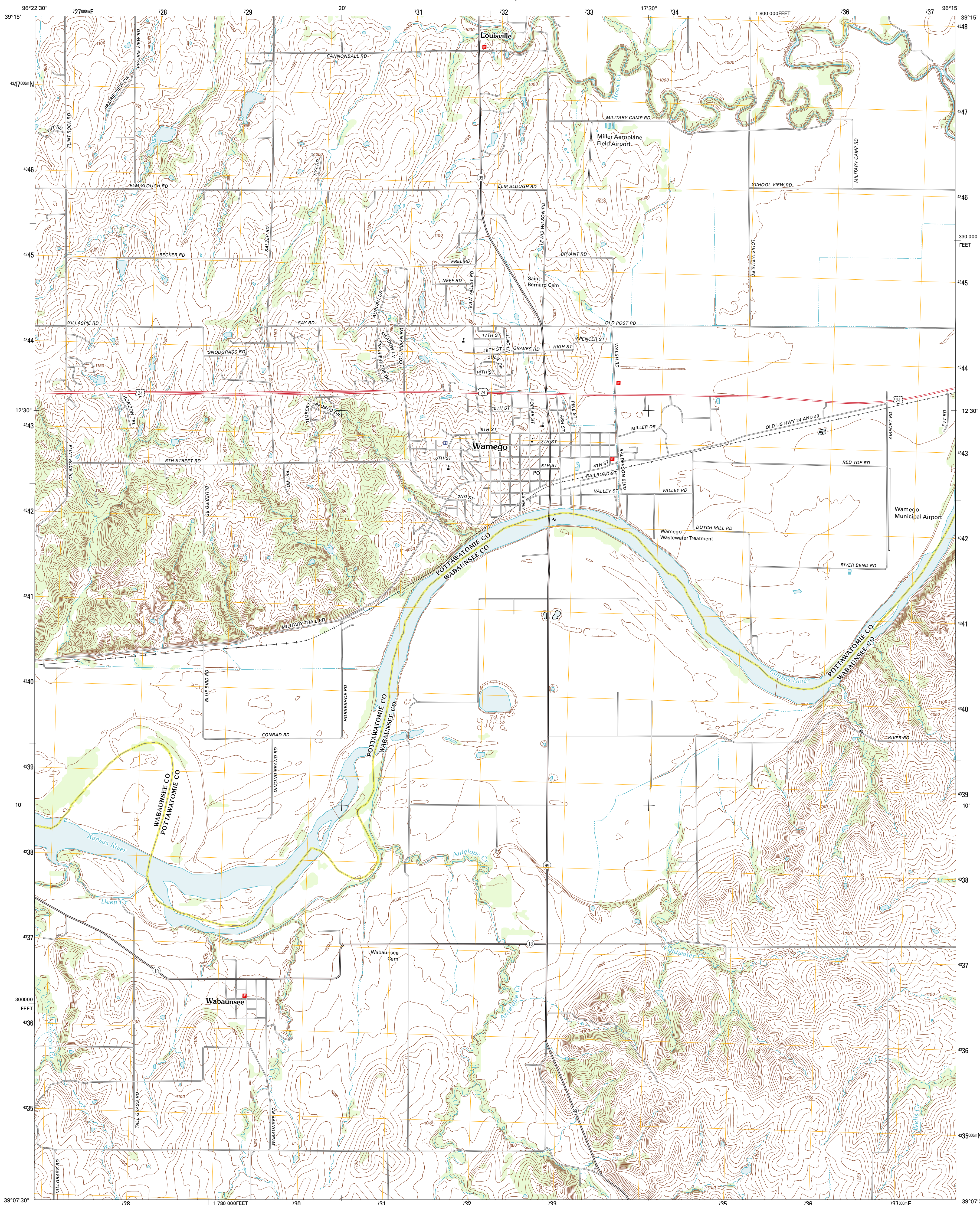




U.S. DEPARTMENT OF THE INTERIOR
U. S. GEOLOGICAL SURVEY

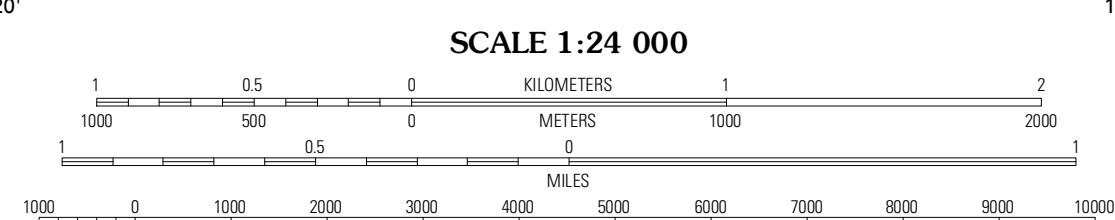
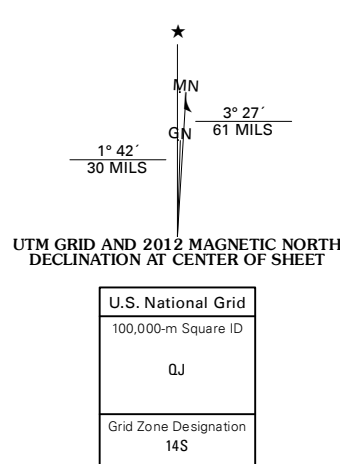


WAMEGO QUADRANGLE
KANSAS
7.5-MINUTE SERIES



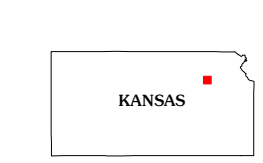
Produced by the United States Geological Survey
North American Datum of 1983 (NAD83)
World Geodetic System of 1984 (WGS84). Projection and
1 000-meter grid: Universal Transverse Mercator, Zone 14S
10 000-foot ticks: Kansas Coordinate System of 1983 (north
zone)

Imagery: N.A.I.P., July 2010
Roads: ©2006-2011 TomTom
Names: ©2006-2011 TomTom
Hydrography: National Hydrography Dataset, 2010
Contours: National Elevation Dataset, 2012
Boundaries: Census, IBWC, IBC, USGS, 1972 - 2012



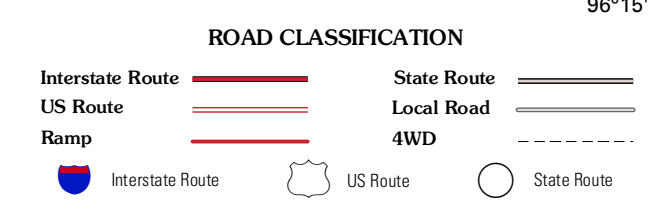
CONTOUR INTERVAL 10 FEET
NORTH AMERICAN VERTICAL DATUM OF 1988

This map was produced to conform with the
National Geospatial Program US Topo Product Standard, 2011.
A metadata file associated with this product is draft version 0.6.4



QUADRANGLE LOCATION

Flush	Louisville	Laclede
Saint George	Wamego	Belvue
Wamego SW	Alma	McFarland



WAMEGO, KS
2012

ADJOINING 7.5 QUADRANGLES