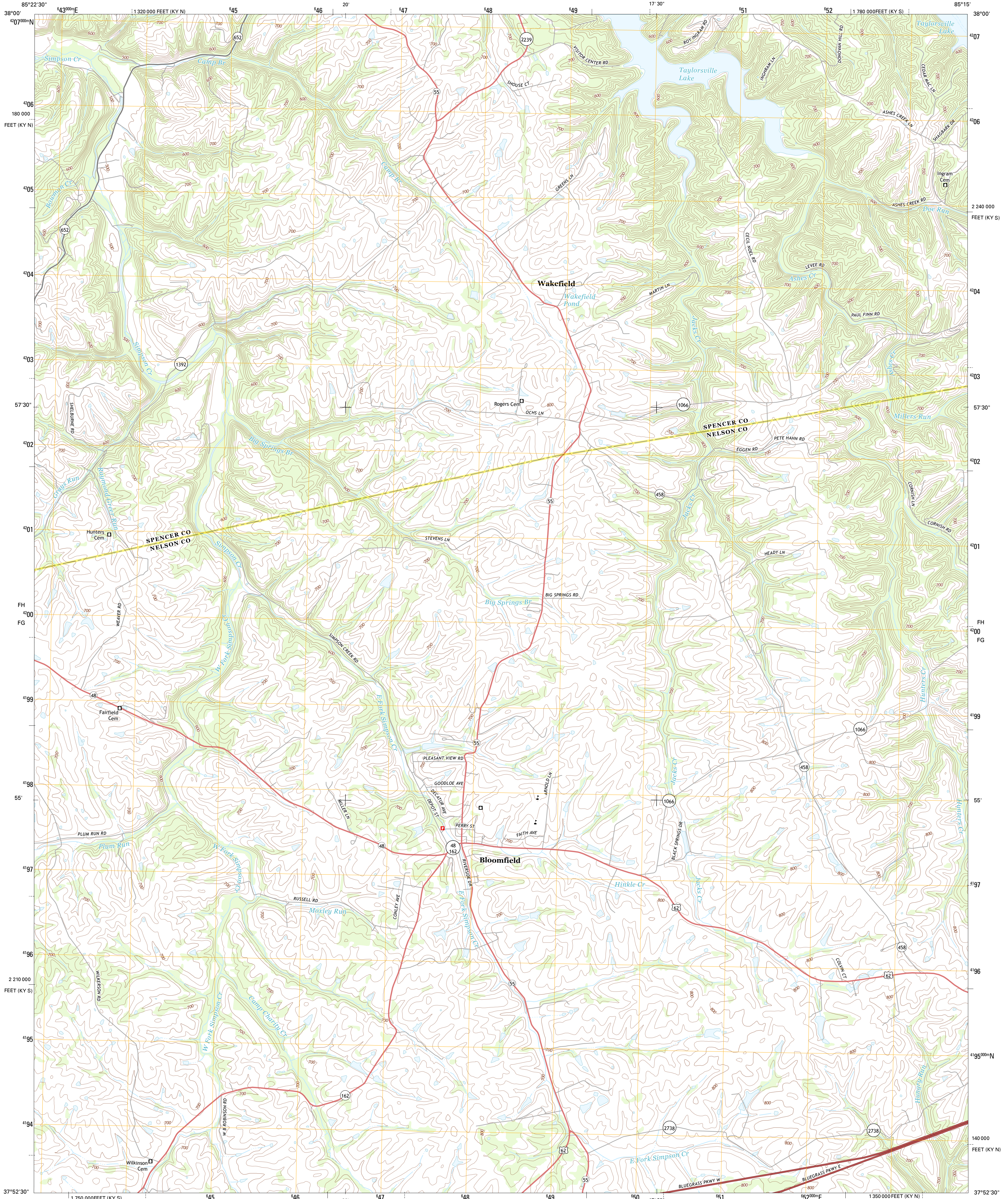




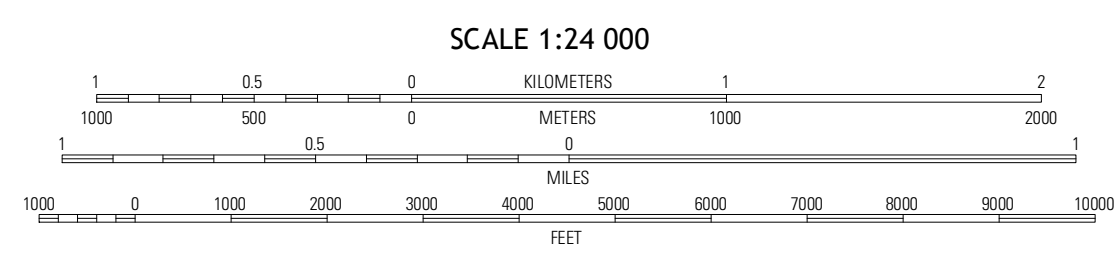
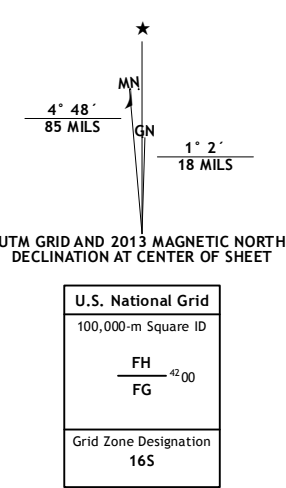
U.S. DEPARTMENT OF THE INTERIOR
U. S. GEOLOGICAL SURVEY



BLOOMFIELD QUADRANGLE
KENTUCKY
7.5-MINUTE SERIES

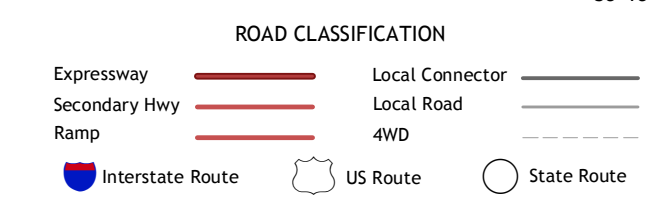


Produced by the United States Geological Survey
North American Datum of 1983 (NAD83)
World Geodetic System of 1984 (WGS84)
1 000-meter grid: Universal Transverse Mercator, Zone 16S
10 000-foot ticks: Kentucky Coordinate System of 1983 (south and north zones)



QUADRANGLE LOCATION

Waterford	Taylorville	Mount Eden
Fairfield	Bloomfield	Chaplin
Barbours	Maud	Irish Grove



CONTOUR INTERVAL 20 FEET
NORTH AMERICAN VERTICAL DATUM OF 1988

This map was produced to conform with the National Geospatial Program US Topo Product Standard, 2011. A metadata file associated with this product is draft version 0.6.8

BLOOMFIELD, KY
2013

ADJOINING 7.5 QUADRANGLES