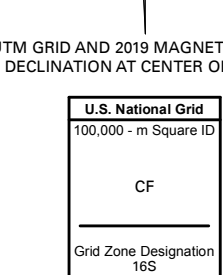
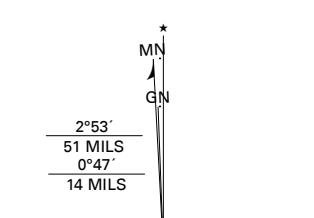


Produced by the United States Geological Survey

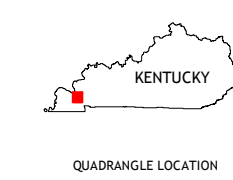
North American Datum of 1983 (NAD83)
World Geodetic System of 1984 (WGS84), Projection and
1 000-meter grid/Universal Transverse Mercator, Zone 16S
This map is not a legal document. Boundaries may be
generalized for this map scale. Private lands within government
reservations may not be shown. Obtain permission before
entering private lands.

Imagery.....N.A.I.P., May 2016 - September 2016
U.S. Census Bureau, 2015
Names.....GNIS, 1979 - 2018
Hydrography.....National Hydrography Dataset, 1899 - 2018
Contours.....National Elevation Dataset, 2002
Boundaries.....Multiple sources; see metadata file 2017 - 2018
Wetlands.....FWS National Wetlands Inventory 1981 - 1983



CONTOUR INTERVAL 10 FEET
NORTH AMERICAN DATUM OF 1983

This map was produced to conform with the
National Geospatial Program US Topo Product Standard, 2011.
A metadata file associated with this product is draft version 0.6.18



QUADRANGLE LOCATION

1	2	3
4	5	6
7	8	

- 1 Little Cypress
- 2 Calvert City
- 3 Grand Rivers
- 4 Elva
- 5 Birmingham Point
- 6 Oak Level
- 7 Hardin
- 8 Fairdealing

ROAD CLASSIFICATION	
	Expressway
	Secondary Hwy
	Ramp
	Interstate Route
	Local Connector
	Local Road
	4WD
	US Route
	State Route

