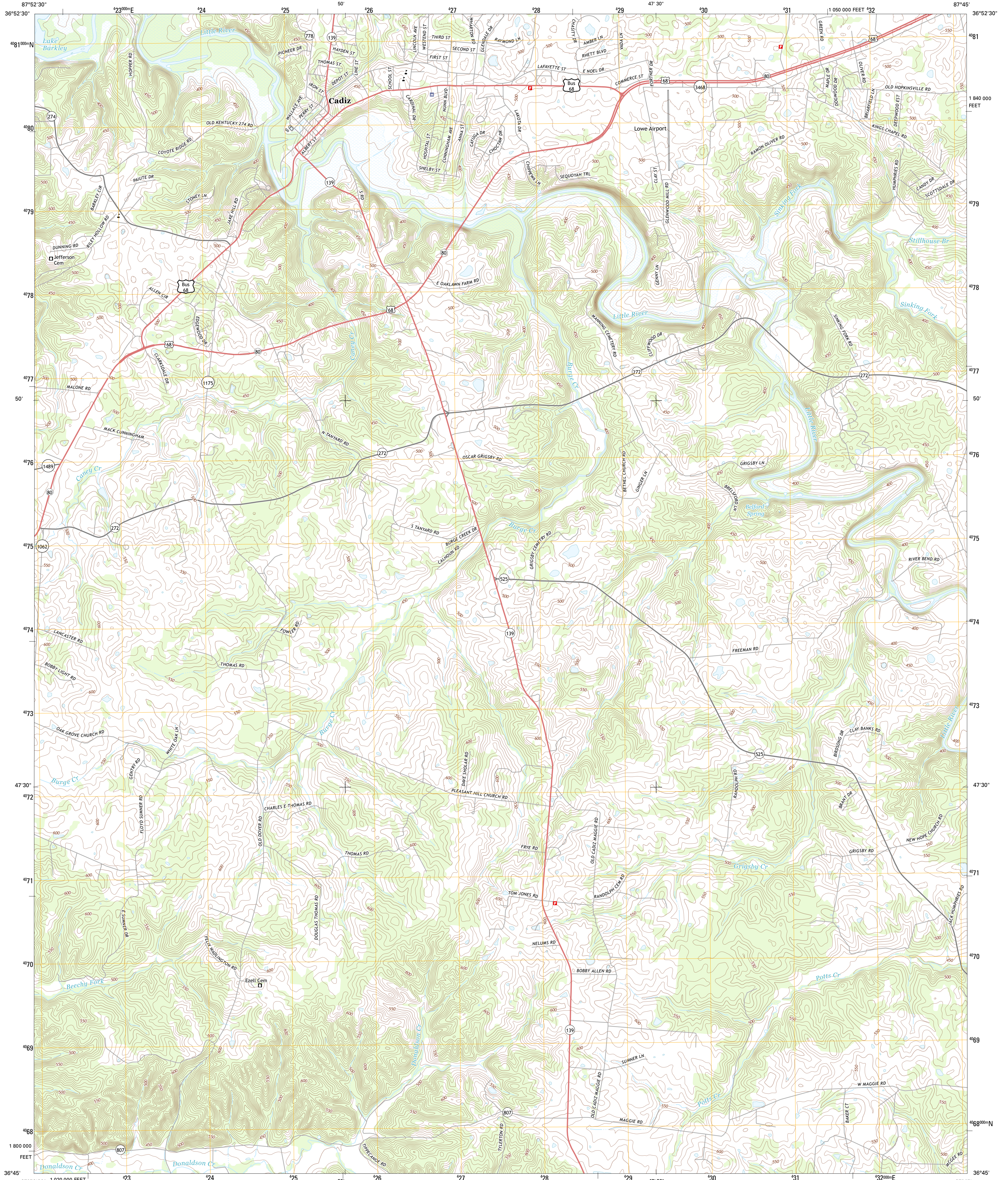




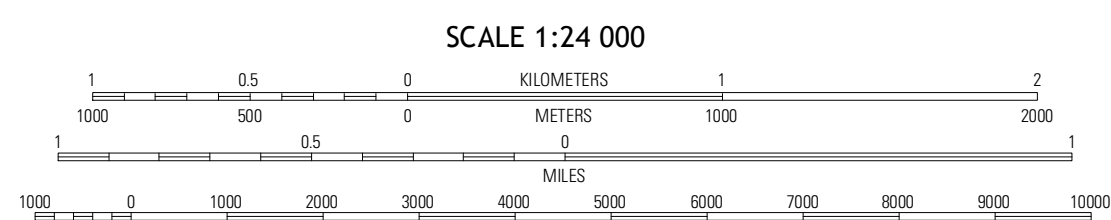
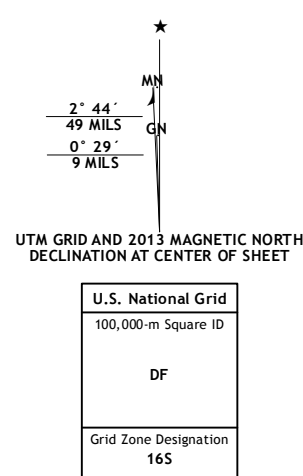
U.S. DEPARTMENT OF THE INTERIOR
U. S. GEOLOGICAL SURVEY



CADIZ QUADRANGLE
KENTUCKY-TRIGG CO.
7.5-MINUTE SERIES



Produced by the United States Geological Survey
North American Datum of 1983 (NAD83)
World Geodetic System of 1984 (WGS84)
1 000-meter grid: Universal Transverse Mercator, Zone 16S
10 000-foot ticks: Kentucky Coordinate System of 1983 (south zone)

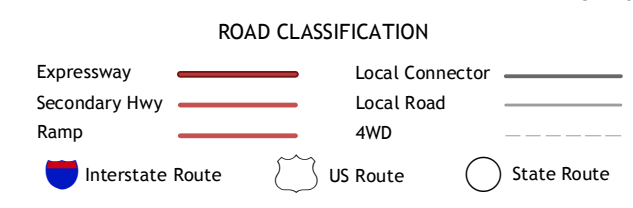


CONTOUR INTERVAL 10 FEET
NORTH AMERICAN VERTICAL DATUM OF 1988
This map was produced to conform with the National Geospatial Program US Topo Product Standard, 2011. A metadata file associated with this product is draft version 0.6.8



QUADRANGLE LOCATION

Lamasco	Cobb	Gravey
Canton	Cadiz	Caledonia
Linton	Johnson Hollow	Roaring Spring



CADIZ, KY
2013

ADJOINING 7.5 QUADRANGLES