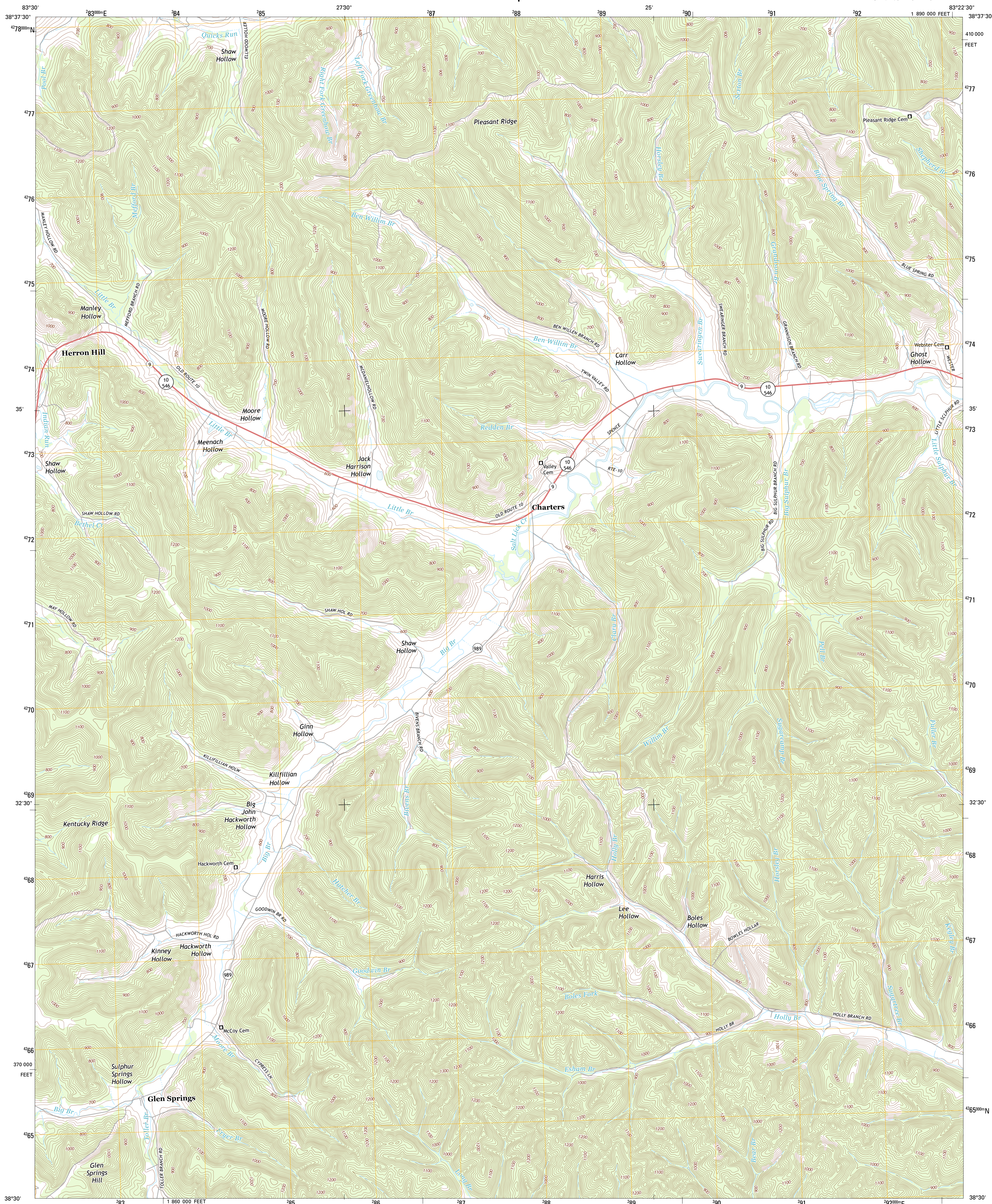




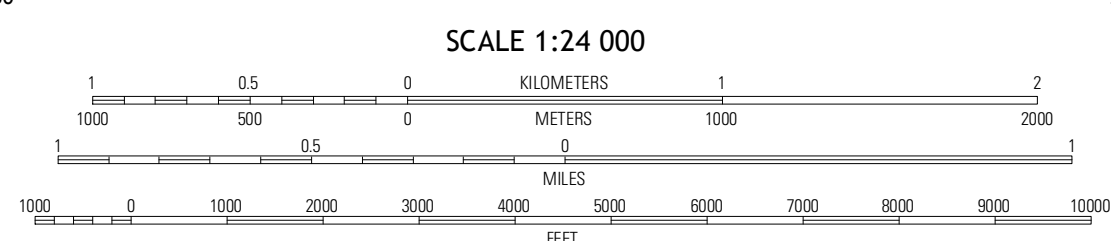
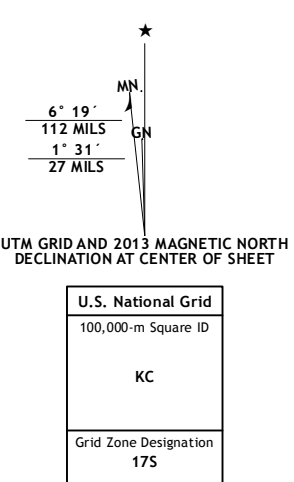
U.S. DEPARTMENT OF THE INTERIOR
U. S. GEOLOGICAL SURVEY



CHARTERS QUADRANGLE
KENTUCKY-LEWIS CO.
7.5-MINUTE SERIES

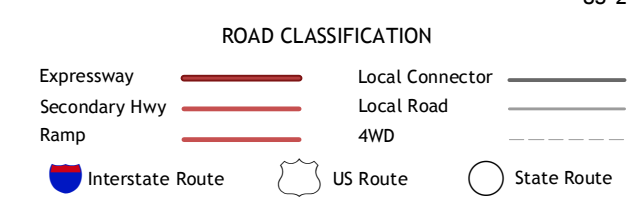


Produced by the United States Geological Survey
North American Datum of 1983 (NAD83)
World Geodetic System of 1984 (WGS84). Projection and
1 000 meter grid: Universal Transverse Mercator, Zone 17S
10 000-foot ticks: Kentucky Coordinate System of 1983 (north
zone)



QUADRANGLE LOCATION

Manchester	Concord	Buena Vista
Tollensboro	Charters	Vanceburg
Bertonsville	Sticklett	Head of Grassy



Imagery.....©NAIP, August 2012
Roads.....©2006-2012, TomTom
Names.....©2012, GNS, 2012
Hydrography.....National Hydrography Dataset, 2012
Contours.....National Elevation Dataset, 2004
Boundaries.....Census, IBWC, IBC, USGS, 1972 - 2012

U.S. National Grid 100,000 = Square ID
KC
Grid Zone Designation 17S

CONTOUR INTERVAL 20 FEET
NORTH AMERICAN VERTICAL DATUM OF 1988
This map was produced to conform with the
National Geospatial Program US Topo Product Standard, 2011.
A metadata file associated with this product is draft version 0.6.8

CHARTERS, KY
2013

ADJOINING 7.5 QUADRANGLES