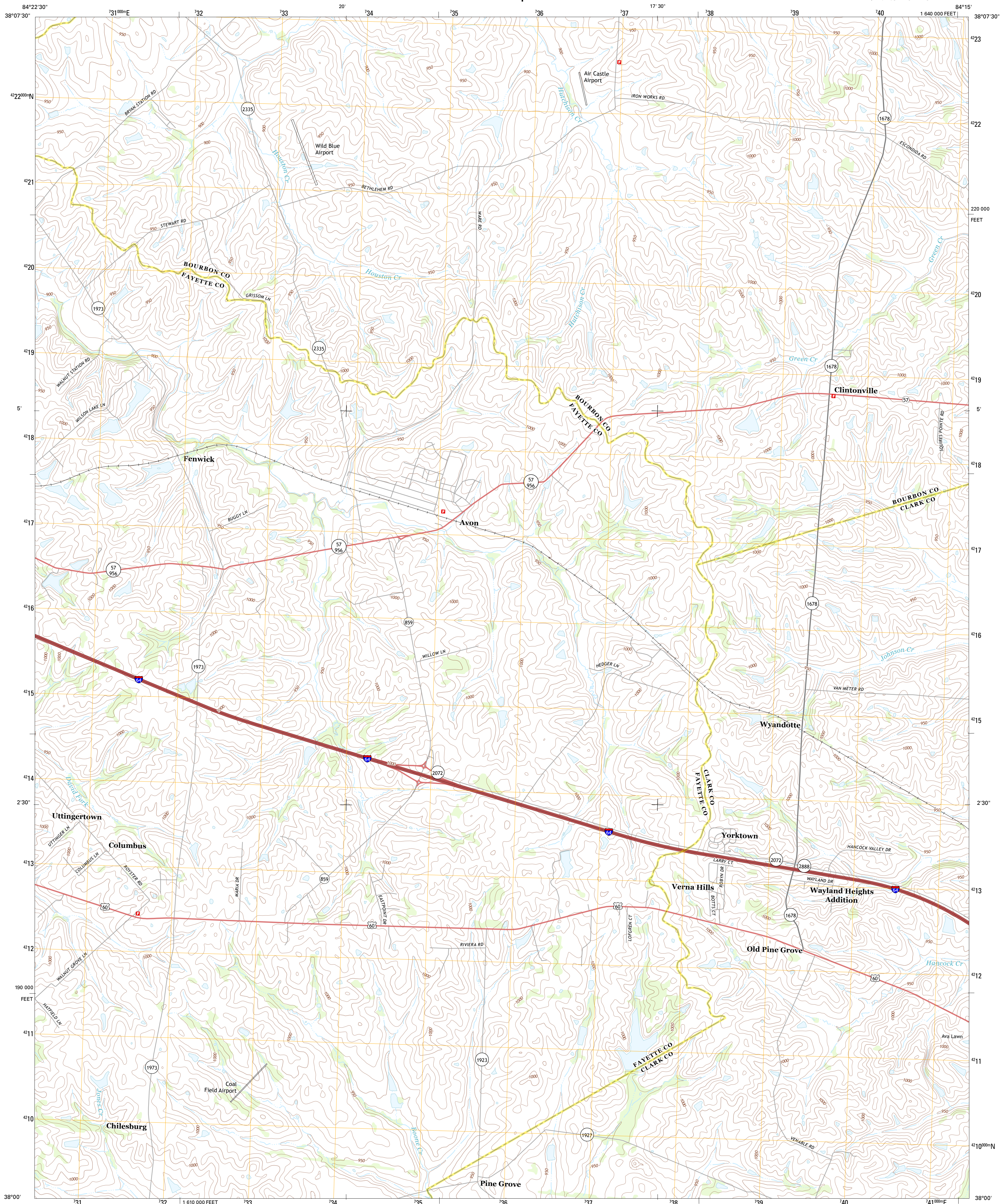




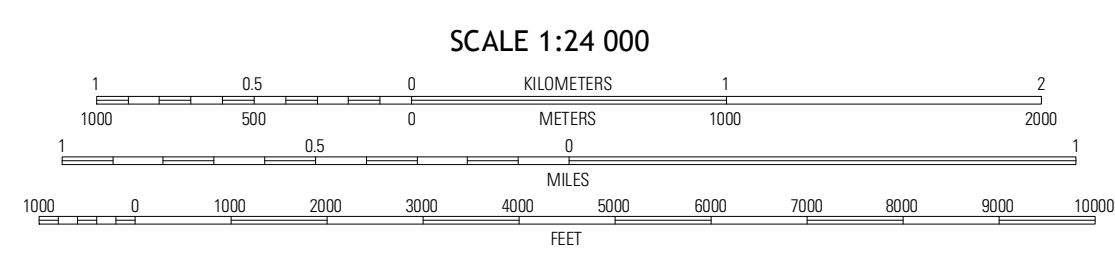
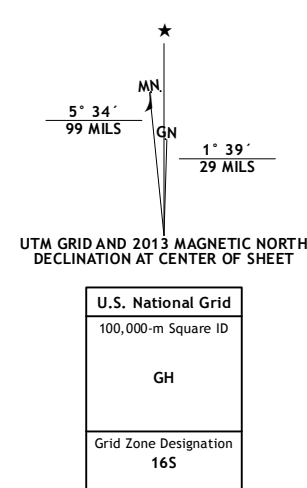
U.S. DEPARTMENT OF THE INTERIOR
U. S. GEOLOGICAL SURVEY



CLINTONVILLE QUADRANGLE
KENTUCKY
7.5-MINUTE SERIES



Produced by the United States Geological Survey
North American Datum of 1983 (NAD83)
World Geodetic System of 1994 (WGS84), Projection and
1 000-meter grid: Universal Transverse Mercator, Zone 16S
10 000-foot ticks: Kentucky Coordinate System of 1983 (north zone)



ROAD CLASSIFICATION

Expressway ——— Local Connector ———
Secondary Hwy ——— Local Road ———
Ramp ——— 4WD ———
Interstate Route ——— US Route ——— State Route ———

QUADRANGLE LOCATION

Centerville	Paris West	Paris East
Lexington East	Clintonville	Austerlitz
Colletown	Ford	Winchester

Imagery.....NAIP, June 2012
Roads.....©2006-2012 TomTom
Names.....©2012
Hydrography.....National Hydrography Dataset, 2012
Contours.....National Elevation Dataset, 2002
Boundaries.....Census, IBC, USGS, 1972 - 2012

CONTOUR INTERVAL 10 FEET
NORTH AMERICAN VERTICAL DATUM OF 1988

This map was produced to conform with the
National Geospatial Program US Topo Product Standard, 2011.
A metadata file associated with this product is draft version 0.6.8

CLINTONVILLE, KY
2013

ADJOINING 7.5 QUADRANGLES