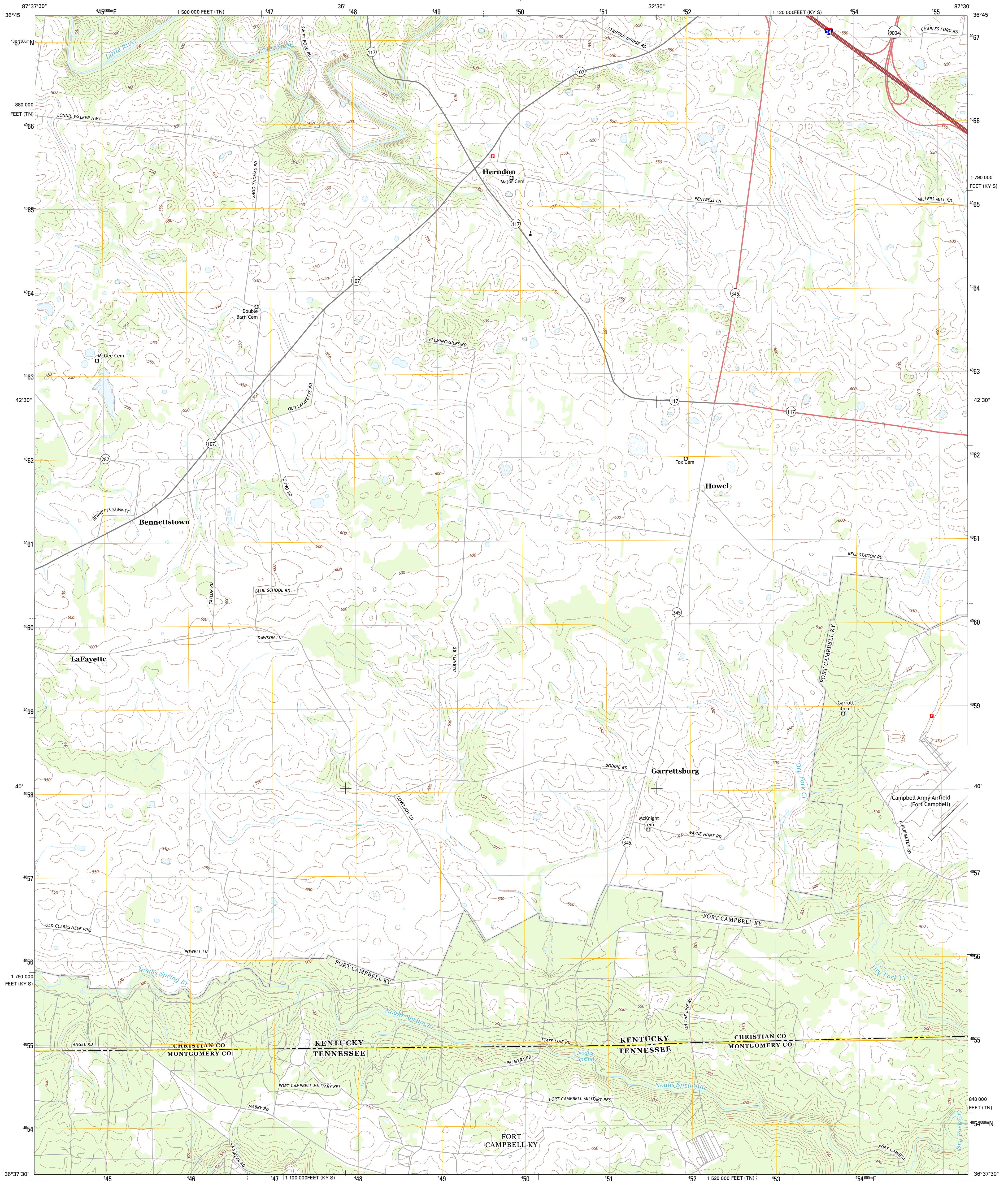




U.S. DEPARTMENT OF THE INTERIOR  
U. S. GEOLOGICAL SURVEY

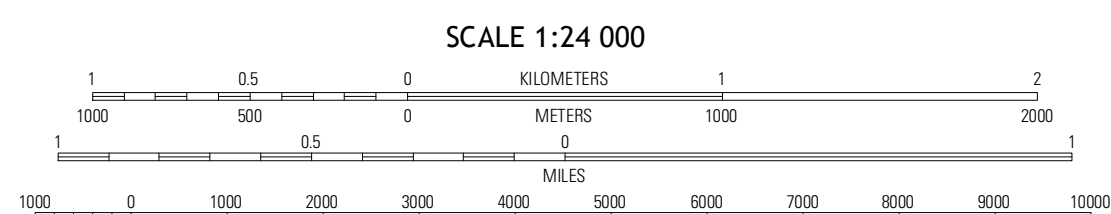
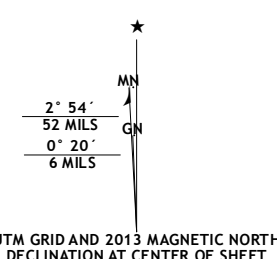


HERNDON QUADRANGLE  
KENTUCKY-TENNESSEE  
7.5-MINUTE SERIES



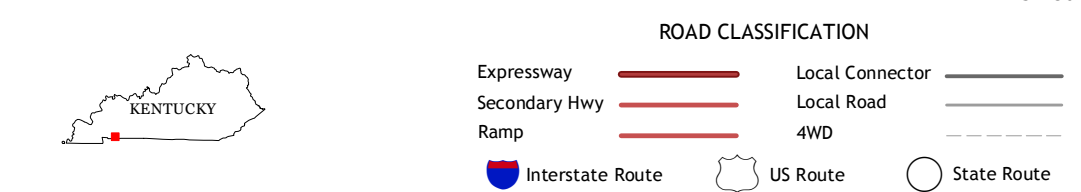
Produced by the United States Geological Survey  
North American Datum of 1983 (NAD83)  
World Geodetic System of 1984 (WGS84). Projection and  
1 000-meter grid: Universal Transverse Mercator, Zone 16S  
10 000-foot ticks: Kentucky Coordinate System of 1983 (south  
zone), Tennessee Coordinate System of 1983

Imagery: NAIIP, June 2012  
Roads: 2006-2012 TomTom  
Names: GNS, 2012  
Hydrography: National Hydrography Dataset, 2012  
Contours: National Elevation Dataset, 2002  
Boundaries: Census, IBWC, IBC, USGS, 1972 - 2012



CONTOUR INTERVAL 10 FEET  
NORTH AMERICAN VERTICAL DATUM OF 1988

This map was produced to conform with the  
National Geospatial Program US Topo Product Standard, 2011.  
A metadata file associated with this product is draft version 0.6.8



QUADRANGLE LOCATION

Caledonia	Church Hill	Hopkinsville
Roaring Spring	Herndon	Oak Grove
Indian Mound	Woodlawn	New Providence

ADJOINING 7.5 QUADRANGLES

HERNDON, KY-TN  
2013