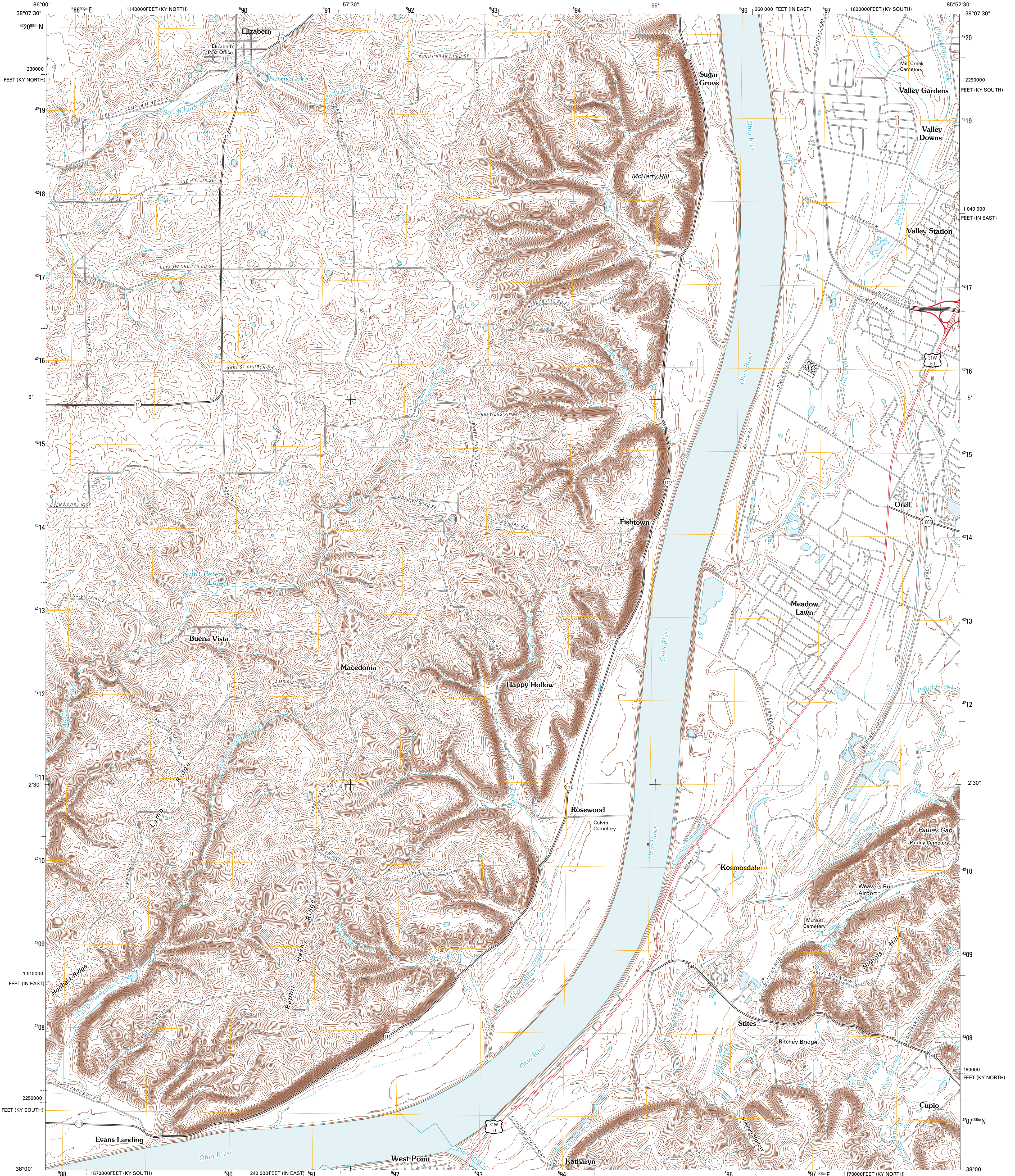




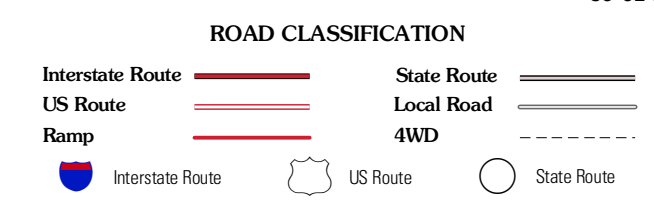
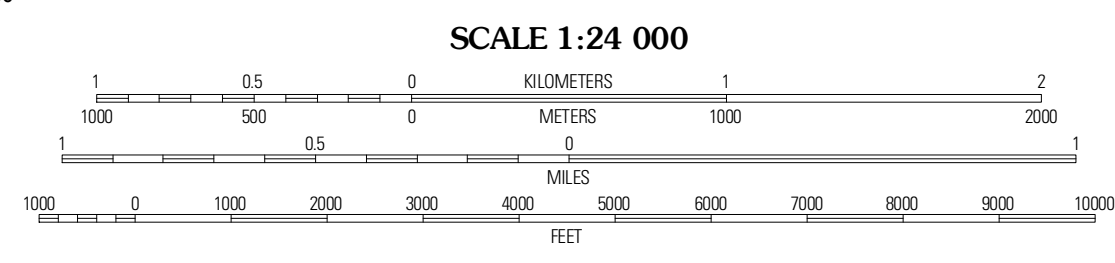
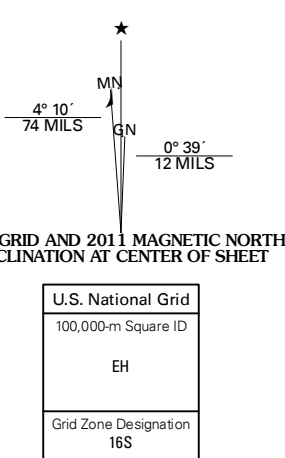
U.S. DEPARTMENT OF THE INTERIOR
U. S. GEOLOGICAL SURVEY



KOSMOSDALE QUADRANGLE
KENTUCKY-INDIANA
7.5-MINUTE SERIES



Produced by the United States Geological Survey
North American Datum of 1983 (NAD83)
World Geodetic System of 1984 (WGS84) Projection and
1 000-meter grid; Universal Transverse Mercator, Zone 16S
10 000-foot ticks; Indiana Coordinate System of 1983 (east zone),
Kentucky Coordinate System of 1983 (north and south zones)



QUADRANGLE LOCATION

Coydon East	Lanesville	Louisville West
Laocoma	Kosmosdale	Valley Station
Rock Haven	Fort Knox	Pitts Point

ADJOINING 7.5 QUADRANGLES

CONTOUR INTERVAL 10 FEET
NORTH AMERICAN VERTICAL DATUM OF 1988

This map was produced to conform with version 0.5.10 of the draft USGS Standards for 7.5-Minute Quadrangle Maps. A metadata file associated with this product is draft version 0.5.11

KOSMOSDALE, KY-IN
2011