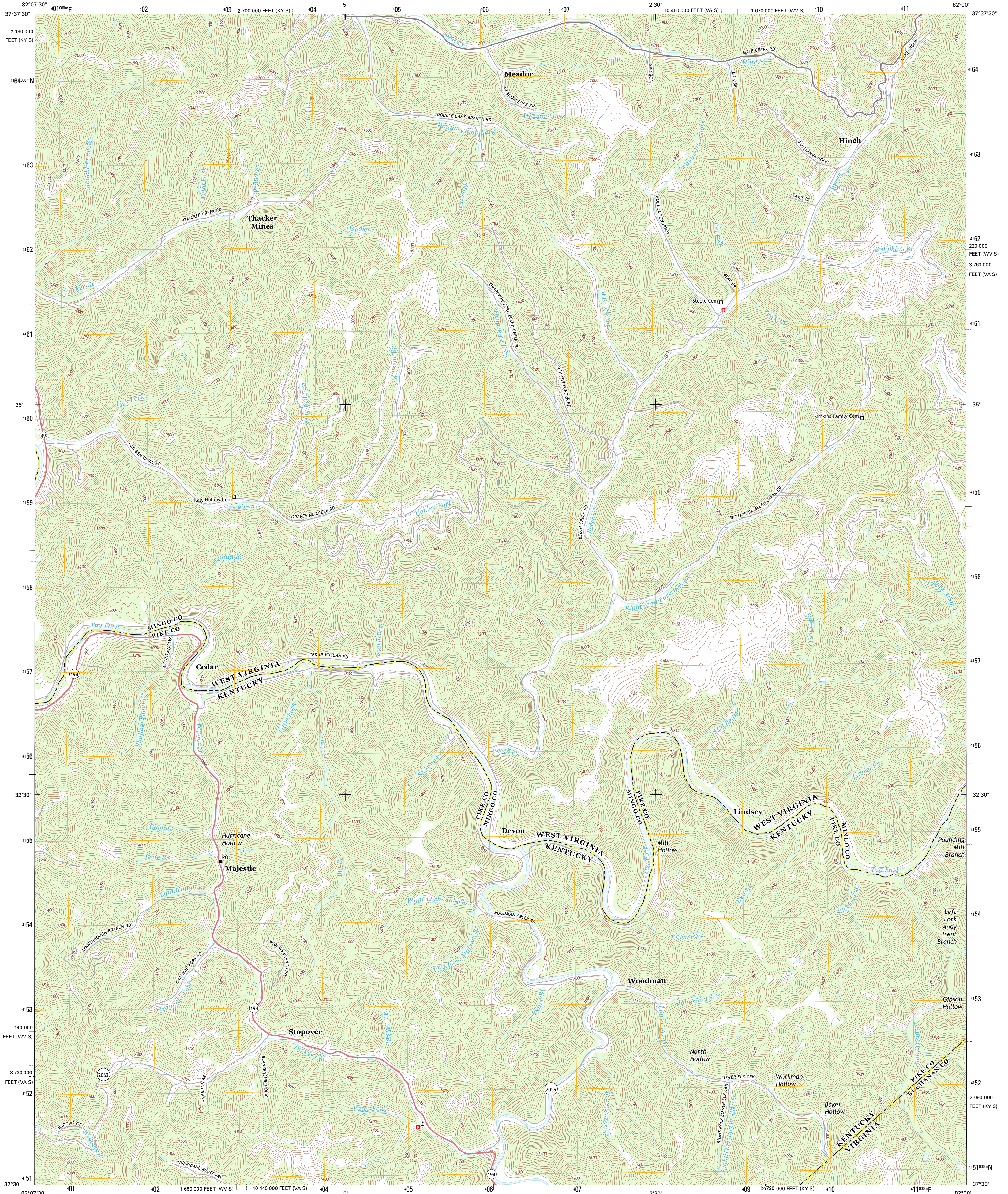




U.S. DEPARTMENT OF THE INTERIOR  
U. S. GEOLOGICAL SURVEY

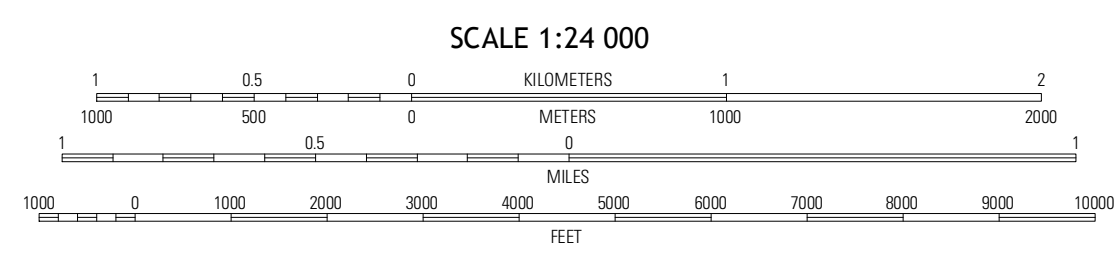
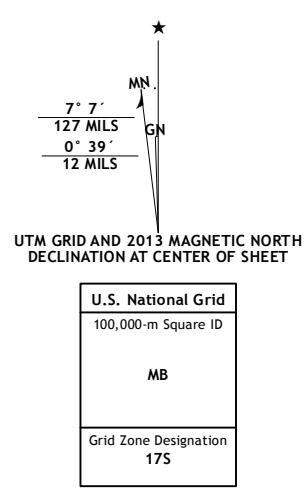


MAJESTIC QUADRANGLE  
KENTUCKY-WEST VIRGINIA-VIRGINIA  
7.5-MINUTE SERIES

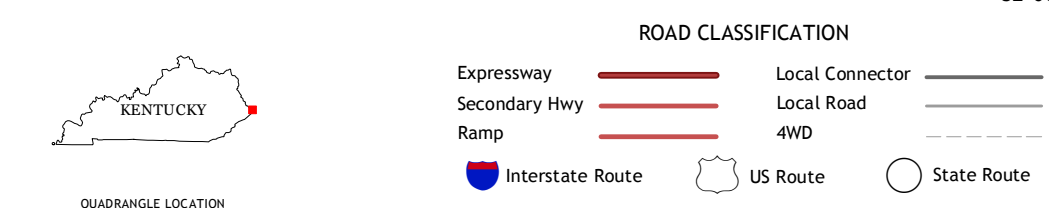


Produced by the United States Geological Survey  
North American Datum of 1983 (NAD83)  
World Geodetic System of 1984 (WGS84), Projection and  
1 000-meter grid; Universal Transverse Mercator, Zone 17S  
10 000-foot ticks; West Virginia Coordinate System of 1983  
(south zone), Kentucky Coordinate System of 1983 (south zone),  
Virginia Coordinate System of 1983 (south zone)

Imagery.....NAIP, August 2009 - July 2012  
Roads.....©2006-2012 TomTom  
Names.....GNIS, 2012  
Hydrography.....National Hydrography Dataset, 2009  
Contours.....National Elevation Dataset, 2005  
Boundaries.....Census, IBWC, IBC, USGS, 1972 - 2012



CONTOUR INTERVAL 40 FEET  
NORTH AMERICAN VERTICAL DATUM OF 1988  
This map was produced to conform with the  
National Geospatial Program US Topo Product Standard, 2011.  
A metadata file associated with this product is draft version 0.6.8



QUADRANGLE LOCATION

Delbarton	Barnabus	Man
Matevan	Majestic	Wharfield
Jamboree	Hurley	Panther

MAJESTIC, KY-WV-VA  
2013

ADJOINING 7.5 QUADRANGLES