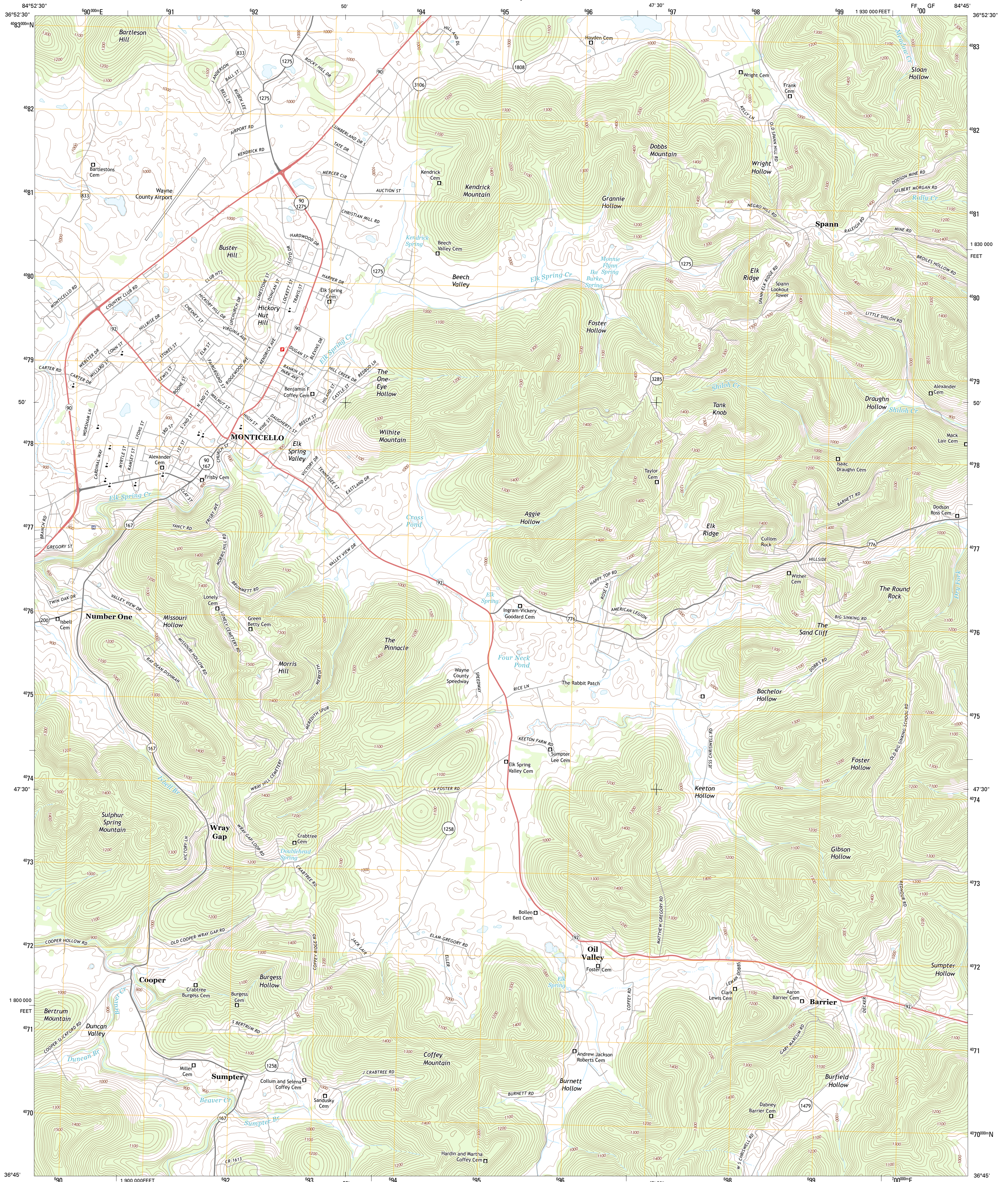




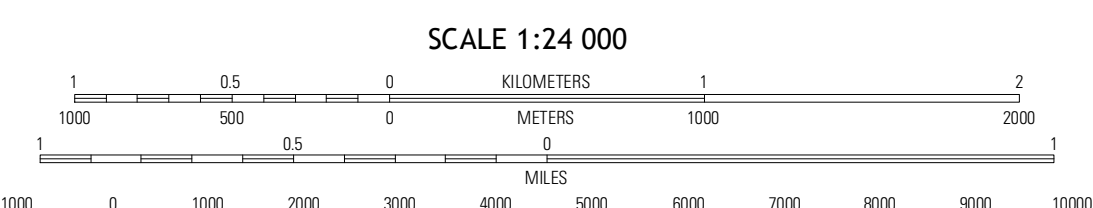
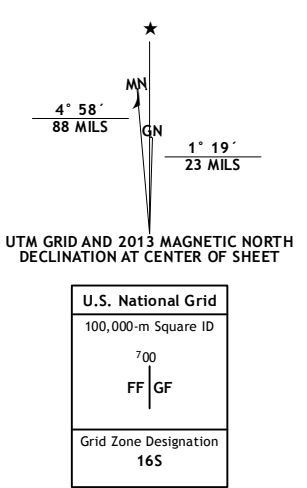
U.S. DEPARTMENT OF THE INTERIOR
U. S. GEOLOGICAL SURVEY



MONTICELLO QUADRANGLE
KENTUCKY-WAYNE CO.
7.5-MINUTE SERIES



Produced by the United States Geological Survey
North American Datum of 1983 (NAD83)
World Geodetic System of 1984 (WGS84) Projection and
1 000-meter grid; Universal Transverse Mercator, Zone 16S
10 000-foot ticks; Kentucky Coordinate System of 1983 (south zone)



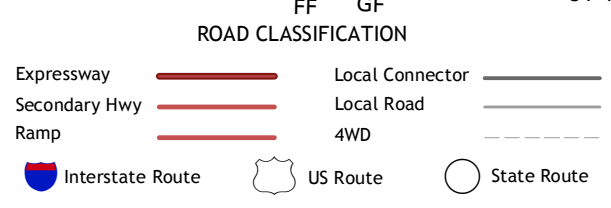
CONTOUR INTERVAL 20 FEET
NORTH AMERICAN VERTICAL DATUM OF 1988

This map was produced to conform with the National Geospatial Program US Topo Product Standard, 2011. A metadata file associated with this product is draft version 0.6.8



QUADRANGLE LOCATION

Jabez	Mill Springs	Prater
Parnell	Monticello	Coopersville
Powersburg	Parsons	Bell Farm



MONTICELLO, KY
2013

ADJOINING 7.5 QUADRANGLES