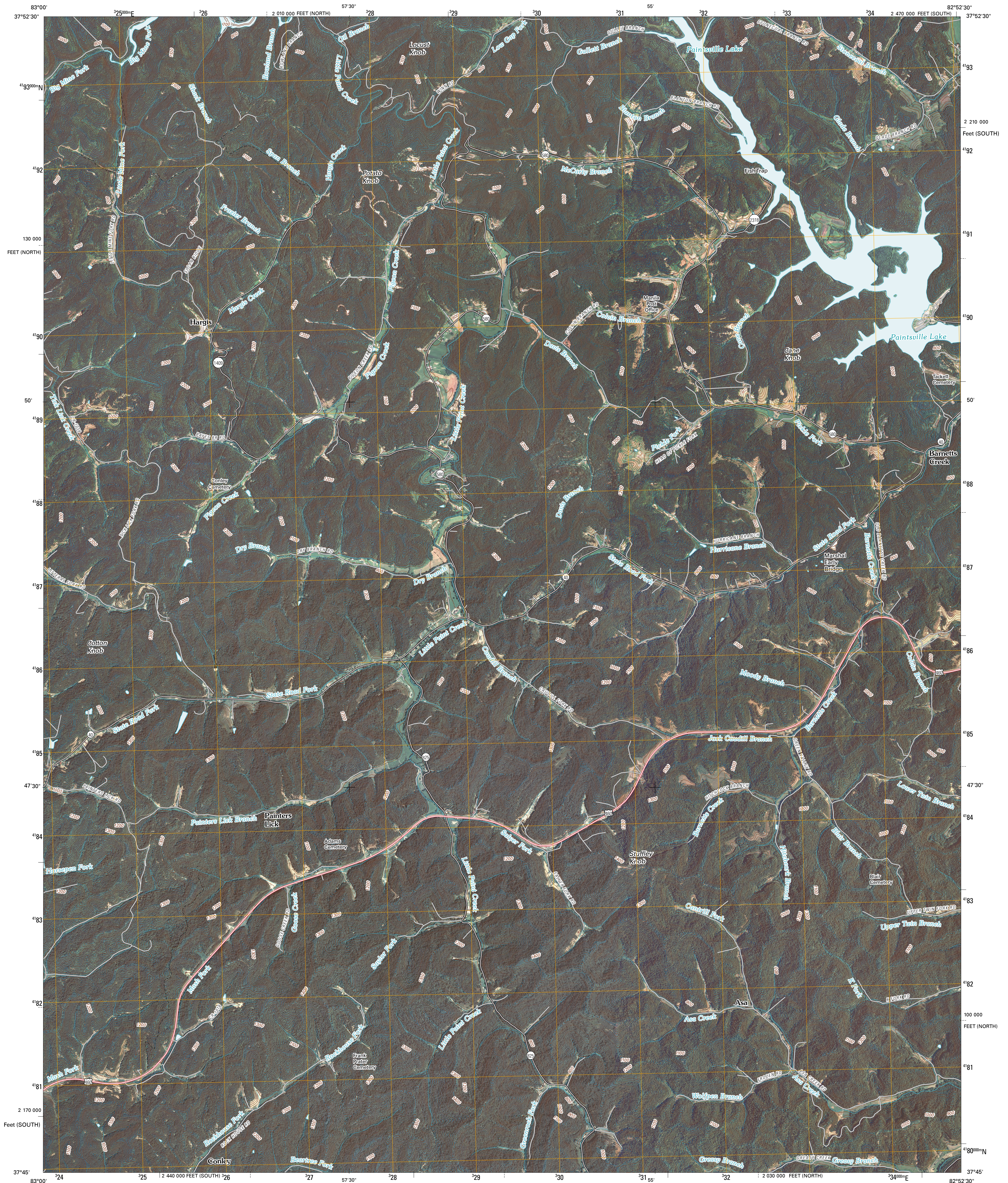




U.S. DEPARTMENT OF THE INTERIOR  
U. S. GEOLOGICAL SURVEY

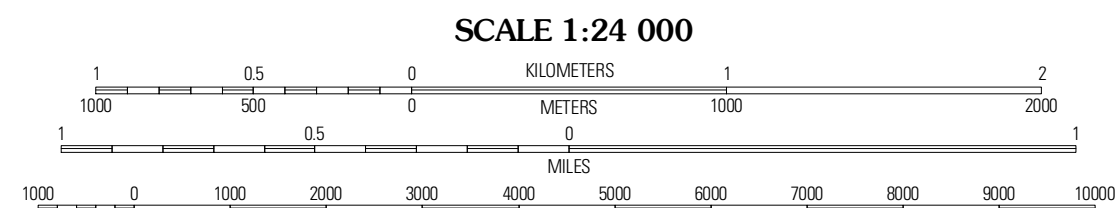
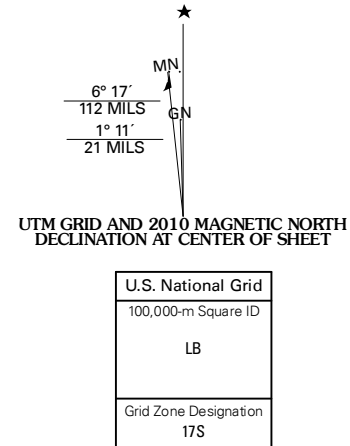


OIL SPRINGS QUADRANGLE  
KENTUCKY  
7.5-MINUTE SERIES



Produced by the United States Geological Survey  
North American Datum of 1983 (NAD83)  
World Geodetic System of 1984 (WGS84). Projection and  
1 000-meter grid: Universal Transverse Mercator, Zone 17S  
10 000-foot ticks: Kentucky Coordinate System of 1983  
(south and north zones)

Imagery.....NAP, July 2008 - August 2008  
Roads.....US Census Bureau TIGER data  
with limited USGS updates, 2004 - 2006  
Names.....GNIS, 2008  
Hydrography.....National Hydrography Dataset, 2008  
Contours.....National Elevation Dataset, 2002



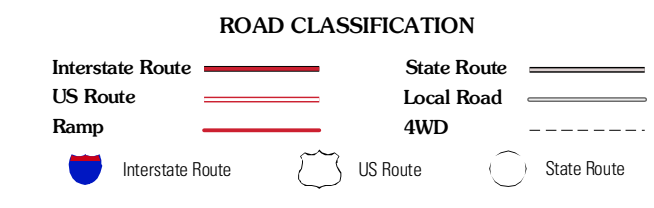
SCALE 1:24 000  
CONTOUR INTERVAL 20 FEET  
This map was produced to conform with version 0.5.10 of the  
draft USGS Standards for 7.5-Minute Quadrangle Maps.  
A metadata file associated with this product is also draft version 0.5.10



QUADRANGLE LOCATION

|                 |                    |              |
|-----------------|--------------------|--------------|
| Dingus          | Redbush            | Sika         |
| Suberwile North | <b>Oil Springs</b> | Paintsville  |
| Suberwile South | Hyton              | Prestonsburg |

ADJOINING 7.5 QUADRANGLES



OIL SPRINGS, KY  
2010