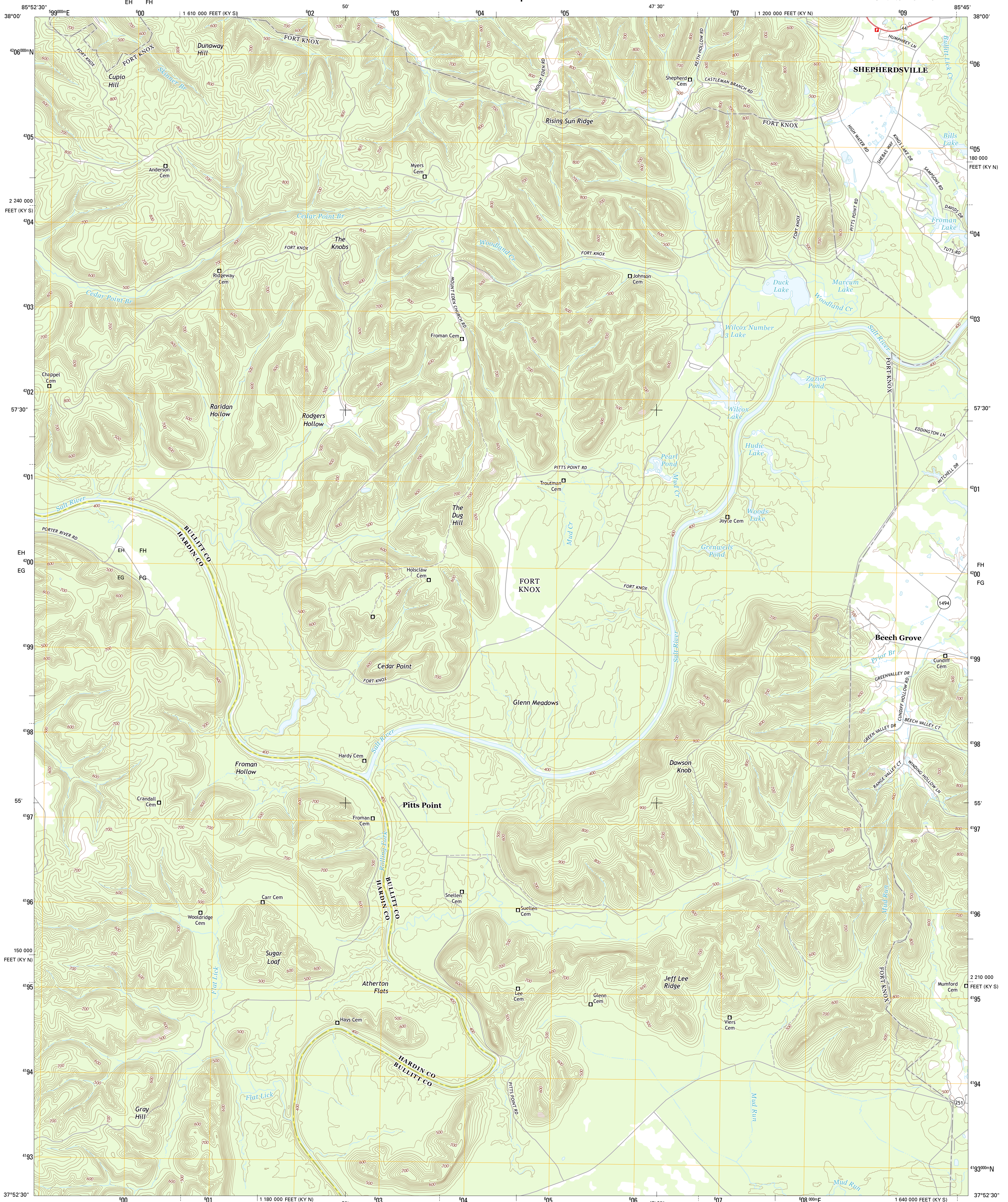




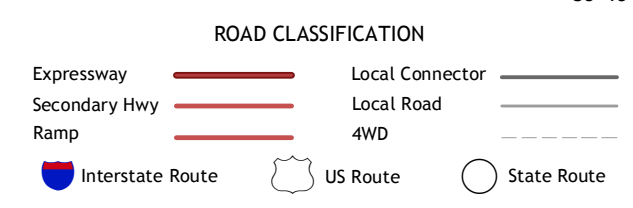
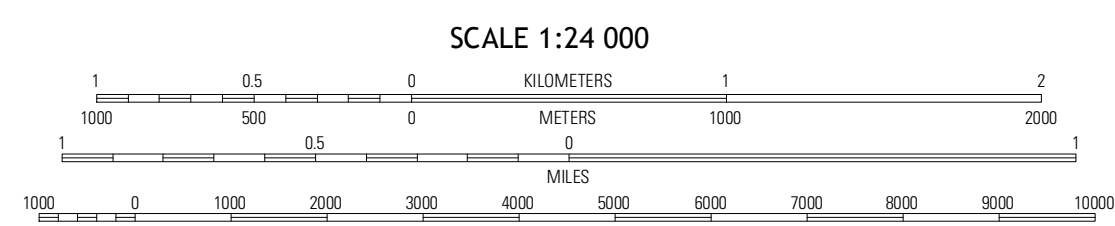
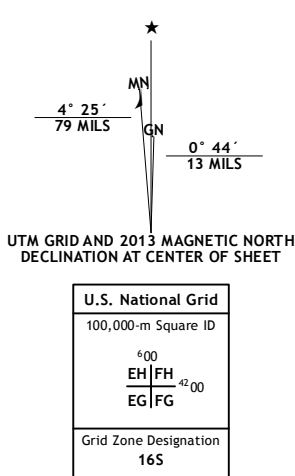
U.S. DEPARTMENT OF THE INTERIOR  
U. S. GEOLOGICAL SURVEY



PITTS POINT QUADRANGLE  
KENTUCKY  
7.5-MINUTE SERIES



Produced by the United States Geological Survey  
North American Datum of 1983 (NAD83)  
World Geodetic System of 1984 (WGS84). Projection and  
1 000-meter grid: Universal Transverse Mercator, Zone 16S  
10 000-foot ticks: Kentucky Coordinate System of 1983 (north  
and south zones)



QUADRANGLE LOCATION

Komondale	Valley Station	Brooks
Fort Knox	Pitts Point	Shepherdsville
Vine Grove	Coleburg	Lebanon Junction

PITTS POINT, KY  
2013

CONTOUR INTERVAL 20 FEET  
NORTH AMERICAN VERTICAL DATUM OF 1988

This map was produced to conform with the  
National Geospatial Program US Topo Product Standard, 2011.  
A metadata file associated with this product is draft version 0.6.8

Imagery.....NAIP, June 2012  
Roads.....2006-2012 TomTom  
Names.....GNIS, 2012  
Hydrography.....National Hydrography Dataset, 2012  
Contours.....National Elevation Dataset, 2002  
Boundaries.....Census, IBWC, USGS, 1972-2012

ADJOINING 7.5 QUADRANGLES