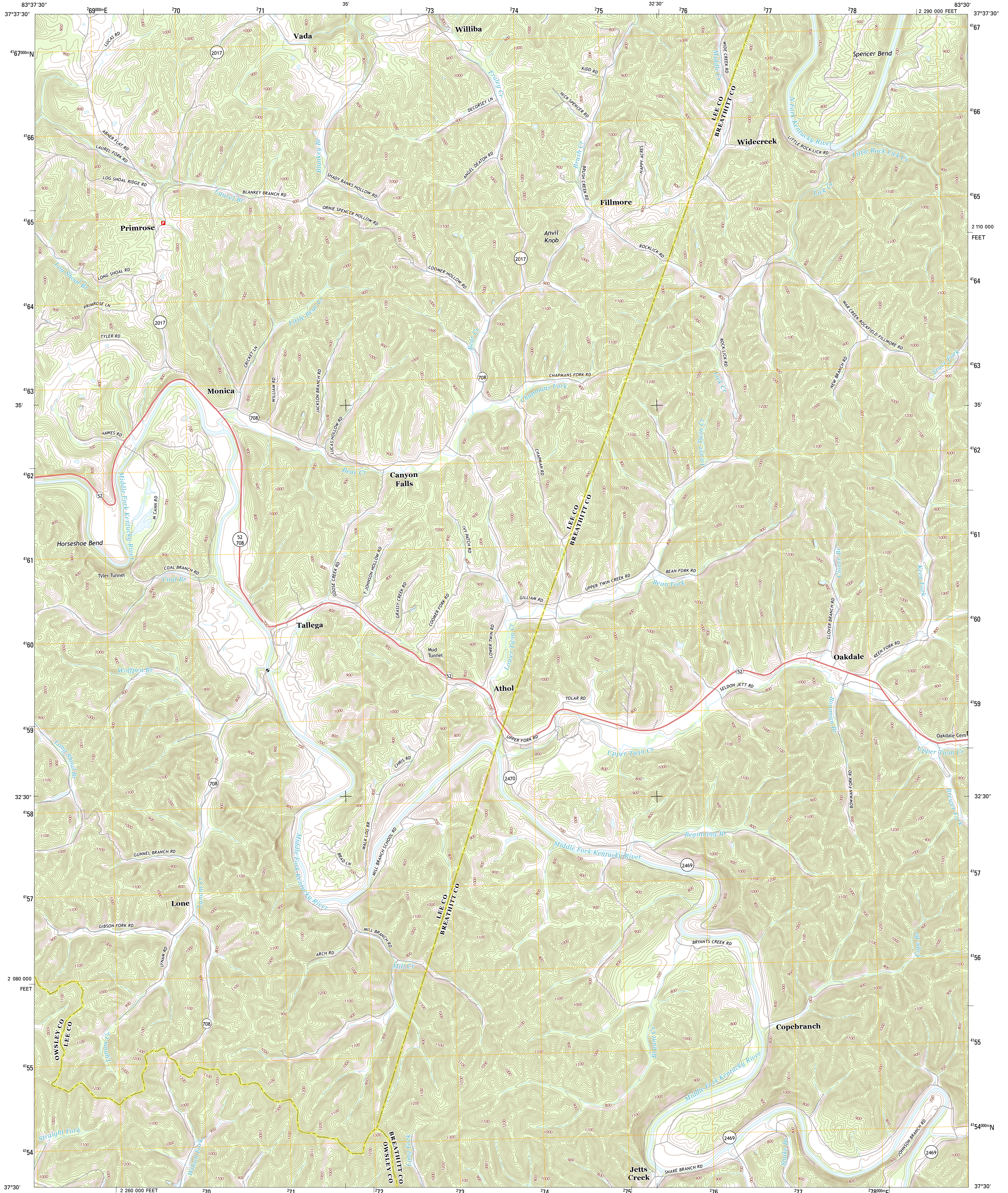




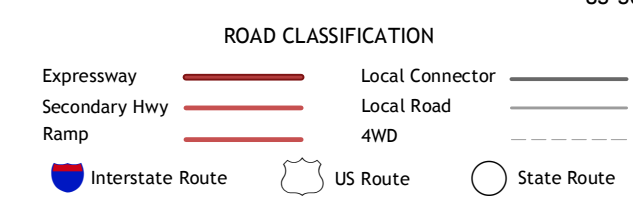
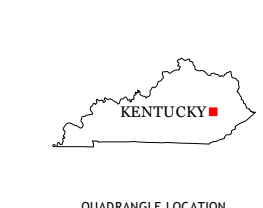
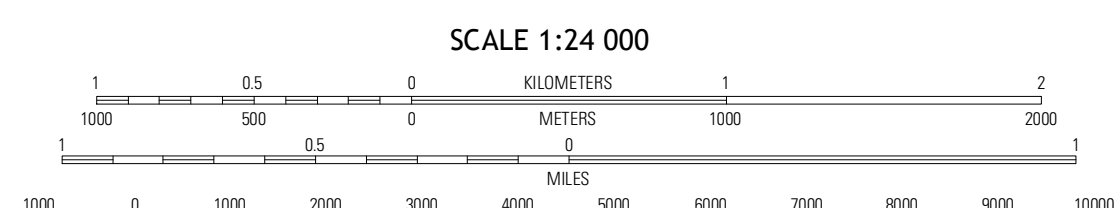
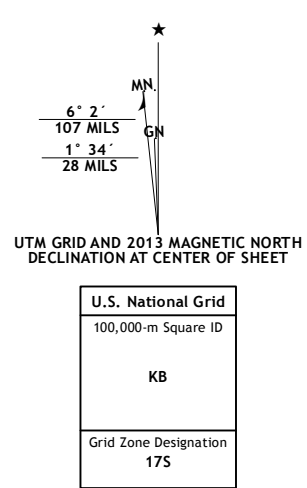
U.S. DEPARTMENT OF THE INTERIOR  
U. S. GEOLOGICAL SURVEY



TALLEGA QUADRANGLE  
KENTUCKY  
7.5-MINUTE SERIES



Produced by the United States Geological Survey  
North American Datum of 1983 (NAD83)  
World Geodetic System of 1984 (WGS84)  
1 000-meter grid: Universal Transverse Mercator, Zone 17S  
10 000-foot ticks: Kentucky Coordinate System of 1983 (south zone)



QUADRANGLE LOCATION

|             |           |         |
|-------------|-----------|---------|
| Zachariah   | Cumpton   | Landsaw |
| Beattyville | Tallega   | Jackson |
| Boonsville  | Covecreek | Canoe   |

Imagery.....NAIP, June 2012  
Roads.....©2006-2012, TomTom  
Names.....©2006-2012, TomTom  
Hydrography.....National Hydrography Dataset, 2012  
Contours.....National Elevation Dataset, 2002  
Boundaries.....Census, IBW, IBC, USGS, 1972 - 2012

CONTOUR INTERVAL 20 FEET  
NORTH AMERICAN VERTICAL DATUM OF 1988  
This map was produced to conform with the National Geospatial Program US Topo Product Standard, 2011. A metadata file associated with this product is draft version 0.6.8

TALLEGA, KY  
2013

ADJOINING 7.5 QUADRANGLES