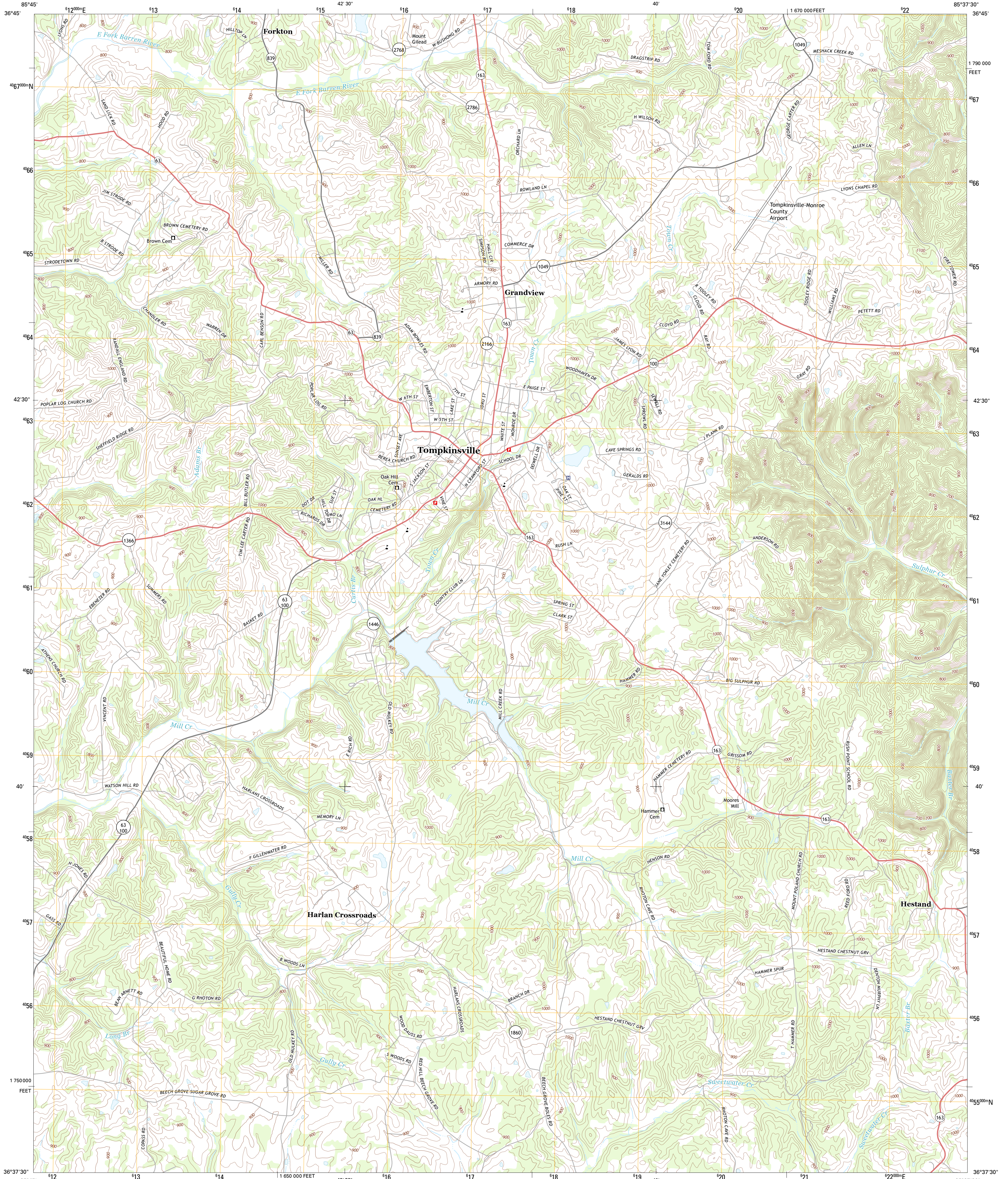




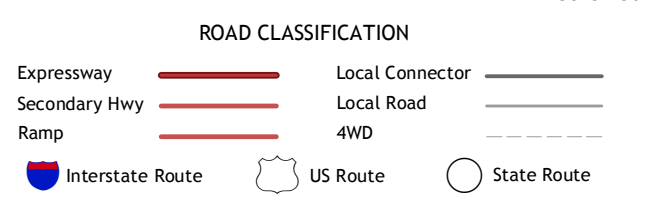
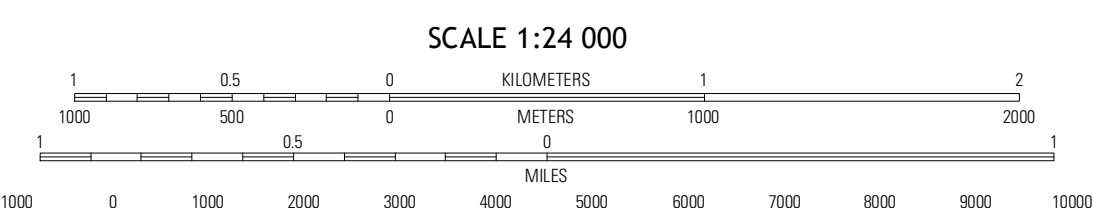
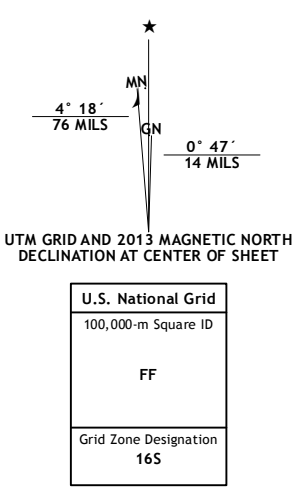
U.S. DEPARTMENT OF THE INTERIOR
U. S. GEOLOGICAL SURVEY



TOMPKINSVILLE QUADRANGLE
KENTUCKY-MONROE CO.
7.5-MINUTE SERIES



Produced by the United States Geological Survey
North American Datum of 1983 (NAD83)
World Geodetic System of 1984 (WGS84). Projection and
1 000-meter grid: Universal Transverse Mercator, Zone 16S
10 000-foot ticks: Kentucky Coordinate System of 1983 (south zone)



QUADRANGLE LOCATION

Freedom	Sulphur Lick	Dubree
Camahell	Tompkinsville	Vernon
Red Boiling Springs	Union Hill	Celina

ADJOINING 7.5 QUADRANGLES

CONTOUR INTERVAL 20 FEET
NORTH AMERICAN VERTICAL DATUM OF 1988

This map was produced to conform with the National Geospatial Program US Topo Product Standard, 2011. A metadata file associated with this product is draft version 0.6.8

TOMPKINSVILLE, KY
2013