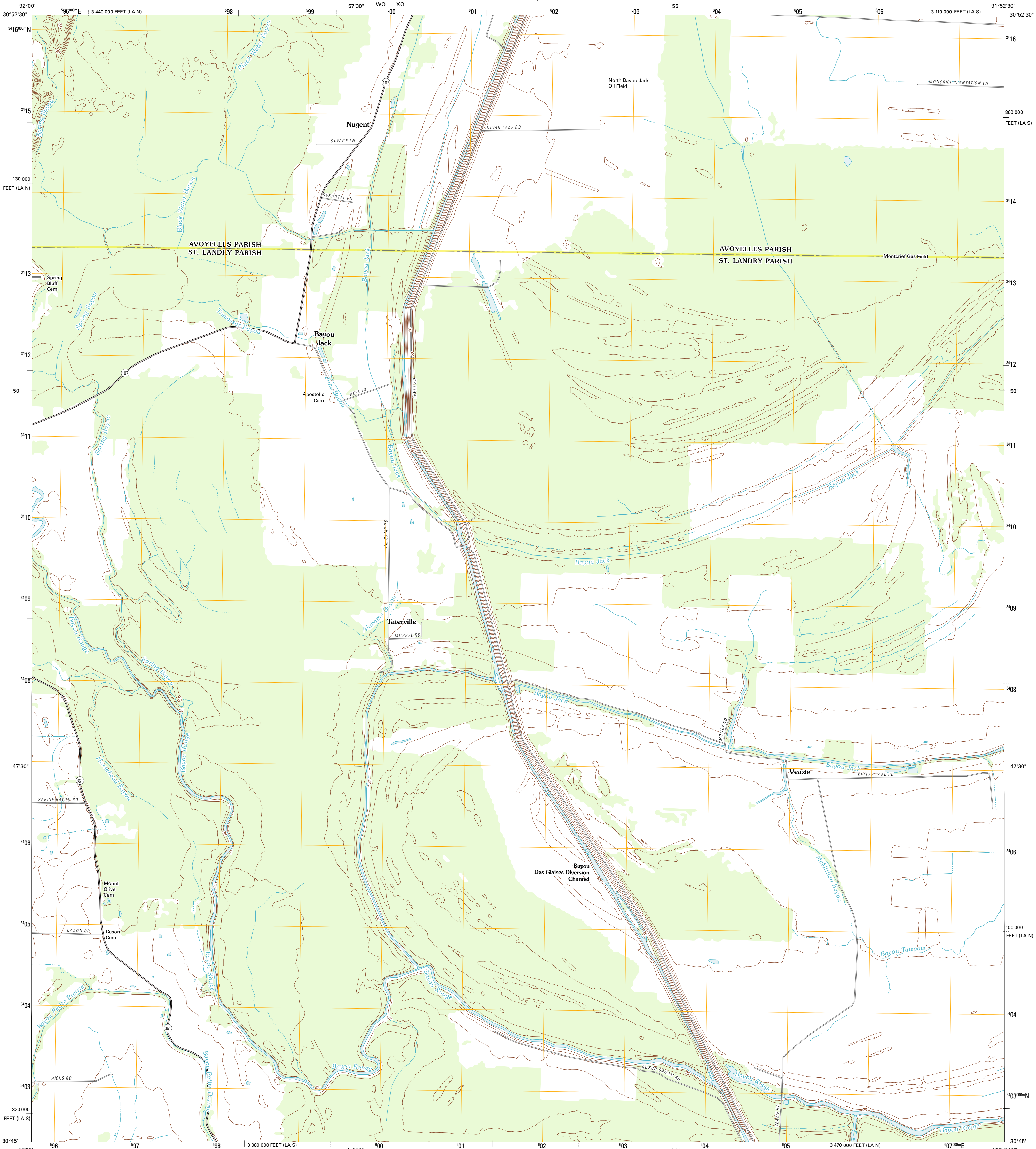




U.S. DEPARTMENT OF THE INTERIOR  
U. S. GEOLOGICAL SURVEY



BAYOU JACK QUADRANGLE  
LOUISIANA  
7.5-MINUTE SERIES



Produced by the United States Geological Survey  
North American Datum of 1983 (NAD83)  
World Geodetic System of 1984 (WGS84). Projection and  
1 000-meter grid: Universal Transverse Mercator, Zone 15R  
10 000-foot ticks: Louisiana Coordinate System of 1983  
(south and north zones)

Imagery:.....NAP, May 2010  
Roads:.....©2006-2011 TomTom  
Names:.....GNIS, 2011  
Hydrography:.....National Hydrography Dataset, 2010  
Contours:.....National Elevation Dataset, 2008  
Boundaries:.....Census, IBWC, IBC, USGS, 1972 - 2010

UTM GRID AND 2012 MAGNETIC NORTH  
DECLINATION AT CENTER OF SHEET

U.S. National Grid
100,000-m Square ID
WQXQ
Grid Zone Designation
15R

SCALE 1:24 000

1 0.5 0 0.5 1 2  
1000 500 0 500 1000  
KILOMETERS  
1 0.5 0 0.5 1 2  
1000 500 0 500 1000  
METERS  
1 0 1000 2000 3000 4000 5000 6000 7000 8000 9000 10000  
MILES  
FEET

CONTOUR INTERVAL 5 FEET  
NORTH AMERICAN VERTICAL DATUM OF 1988

This map was produced to conform with the  
National Geospatial Program US Topo Product Standard, 2011.  
A metadata file associated with this product is draft version 0.6.1



QUADRANGLE LOCATION		
Cottonport	Plaucheville	Simmesport
Morrow	Bayou Jack	Bayou Current
Beggs	Palmetto	Swayze Lake

ROAD CLASSIFICATION

Interstate Route	State Route
US Route	Local Road
Ramp	4WD

Interstate Route US Route State Route

BAYOU JACK, LA  
2012