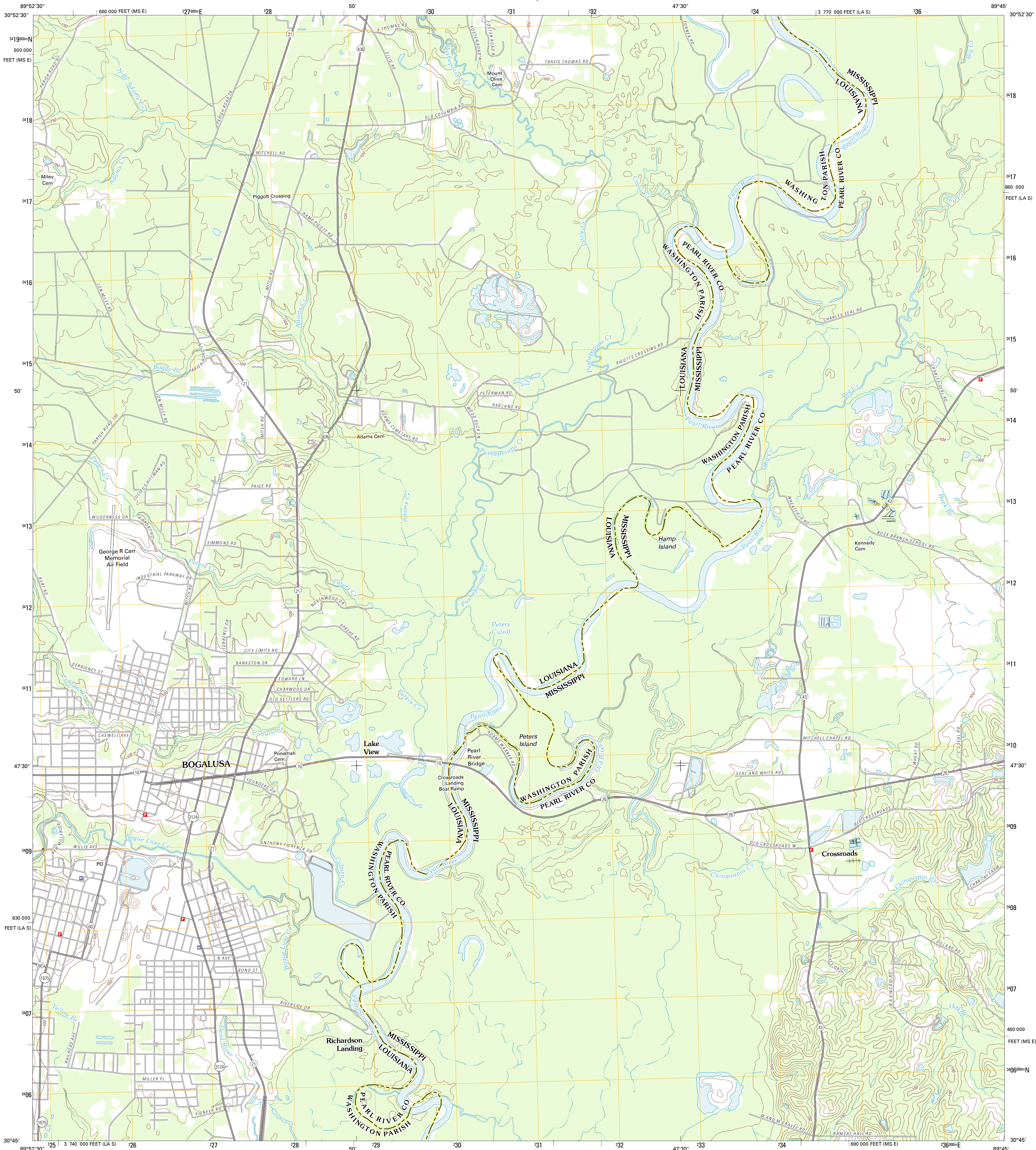




U.S. DEPARTMENT OF THE INTERIOR
U. S. GEOLOGICAL SURVEY

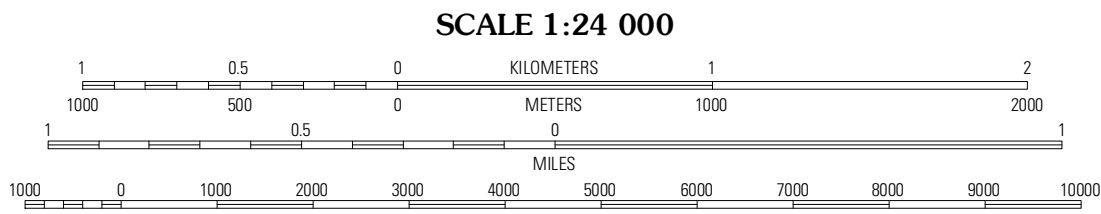
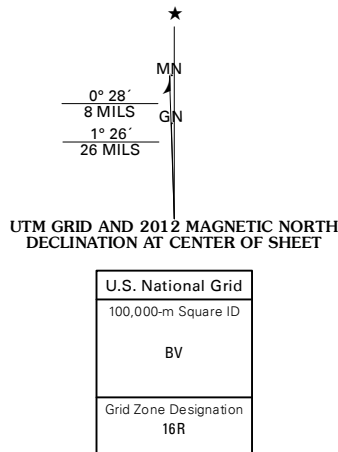


BOGALUSA EAST QUADRANGLE
LOUISIANA-MISSISSIPPI
7.5-MINUTE SERIES



Produced by the United States Geological Survey
North American Datum of 1983 (NAD83)
World Geodetic System of 1984 (WGS84), Projection and
1 000-meter grid; Universal Transverse Mercator, Zone 16R
10 000-foot ticks: Louisiana Coordinate System of 1983
(south zone), Mississippi Coordinate System of 1983 (east
zone)

Imagery.....NAP, May 2010
Roads.....©2006-2011 TomTom
Names.....GNIS, 2011
Hydrography.....National Hydrography Dataset, 2010
Contours.....National Elevation Dataset, 2008
Boundaries.....Census, IBWC, ISC, USGS, 1972 - 2010



CONTOUR INTERVAL 10 FEET
NORTH AMERICAN VERTICAL DATUM OF 1988
This map was produced to conform with the
National Geospatial Program US Topo Product Standard, 2011.
A metadata file associated with this product is draft version 0.6.1



State Line	Angle	Fords Creek
Bogalusa West	Bogalusa East	White Sand
Sun	Henleyfield	McNeill

ROAD CLASSIFICATION
Interstate Route
US Route
Ramp
State Route
Local Road
4WD

BOGALUSA EAST, LA-MS
2012

ADJOINING 7.5 QUADRANGLES