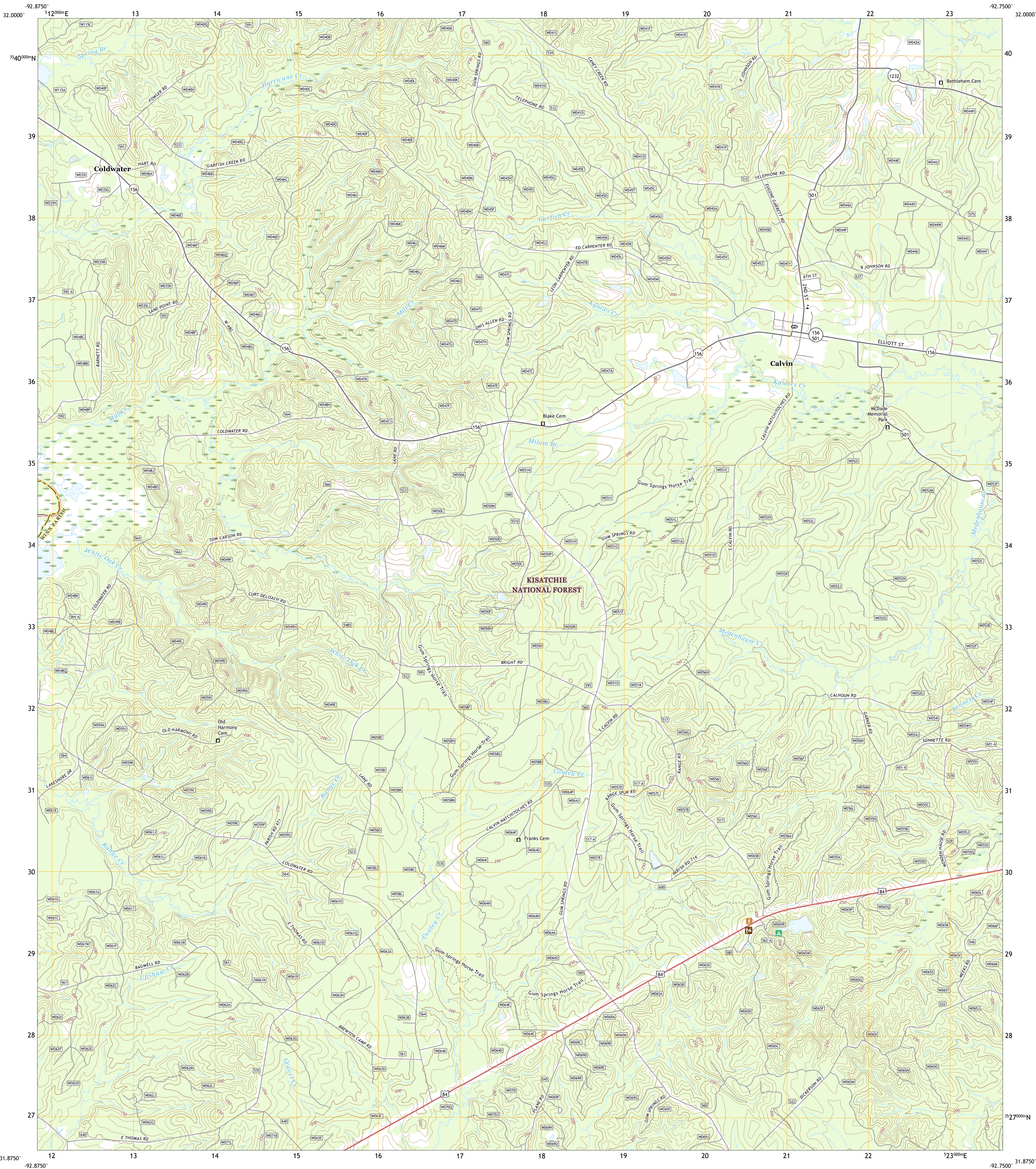




U.S. DEPARTMENT OF THE INTERIOR
U.S. GEOLOGICAL SURVEY



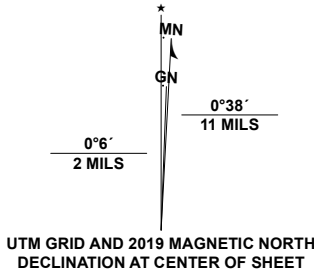
CALVIN QUADRANGLE
LOUISIANA
7.5-MINUTE SERIES



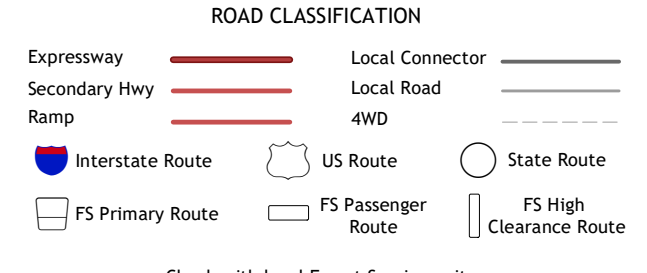
Produced by the United States Geological Survey

North American Datum of 1983 (NAD83)
World Geodetic System of 1984 (WGS84). Projection and
1 000-meter grid: Universal Transverse Mercator, Zone 15R
This map is not a legal document. Boundaries may be
generalized for this map scale. Private lands within government
reservations may not be shown. Obtain permission before
entering private lands.

Imagery.....NAIP, September 2019
Roads.....U.S. Census Bureau, Not Available
Roads within US Forest Service Lands.....FSTopo Data
Names.....with Limited Forest Service updates, 2013 - 2017
Hydrography.....National Hydrography Dataset, 1899 - 2018
Contours.....National Elevation Dataset, 2011
Boundaries.....Multiple sources: see metadata file, 2018 - 2019
Public Land Survey System.....BLM, 2019
Wetlands.....FWS National Wetlands Inventory, 1974



1	2	3	1 Goldonna
4	5	6	2 Iron Branch
7	8	9	3 Dodson
10	11	12	4 Coup Point
13	14	15	5 Winnfield West
16	17	18	6 Saint Maurice
19	20	21	7 Coochie Brake
22	23	24	8 Atlanta



Check with local Forest Service unit
for current travel conditions and restrictions.

CALVIN, LA
2020

