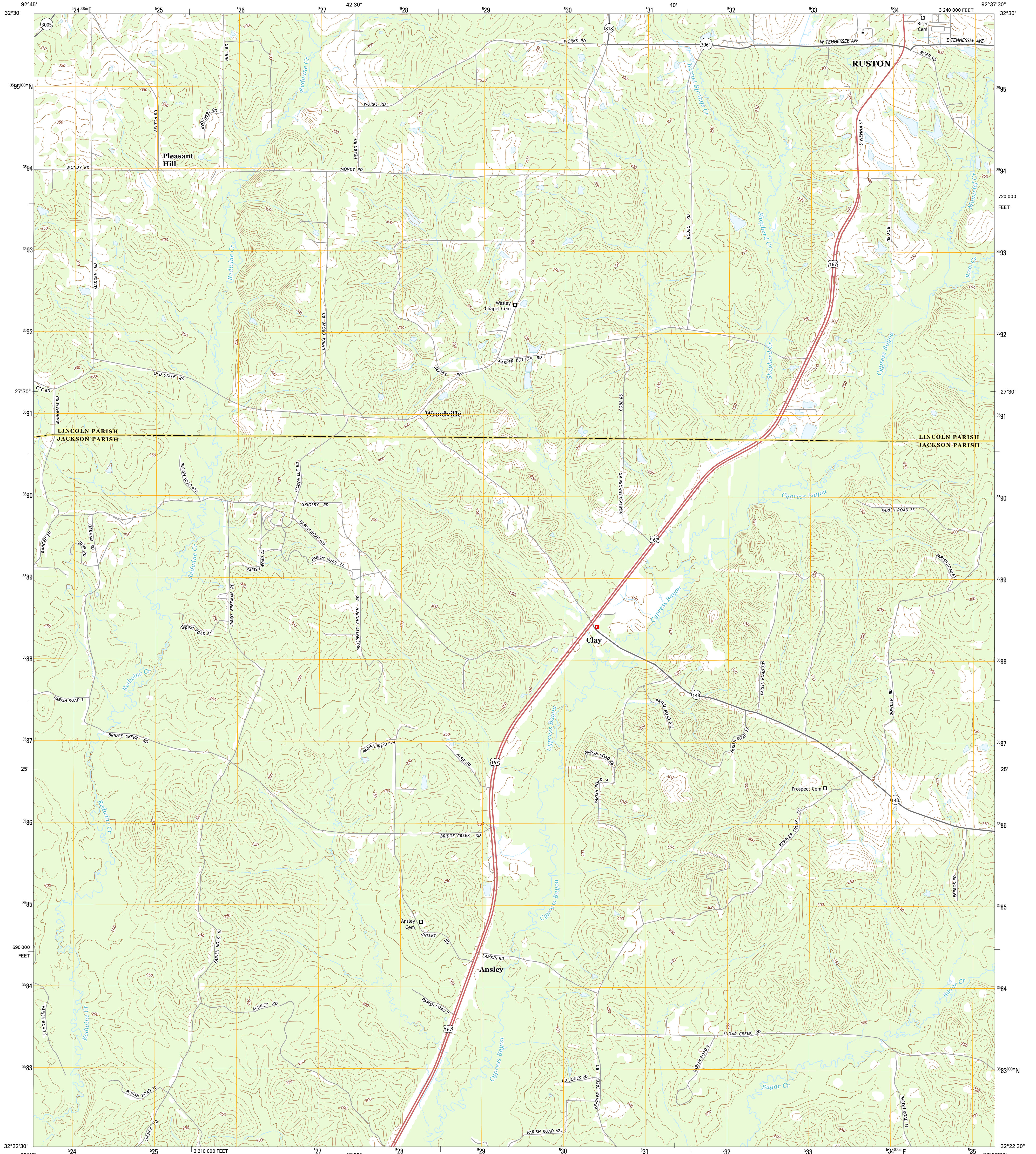




U.S. DEPARTMENT OF THE INTERIOR
U.S. GEOLOGICAL SURVEY



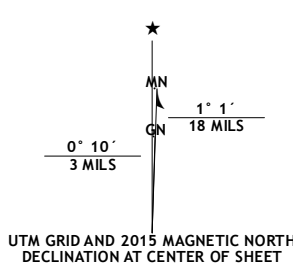
CLAY QUADRANGLE
LOUISIANA
7.5-MINUTE SERIES



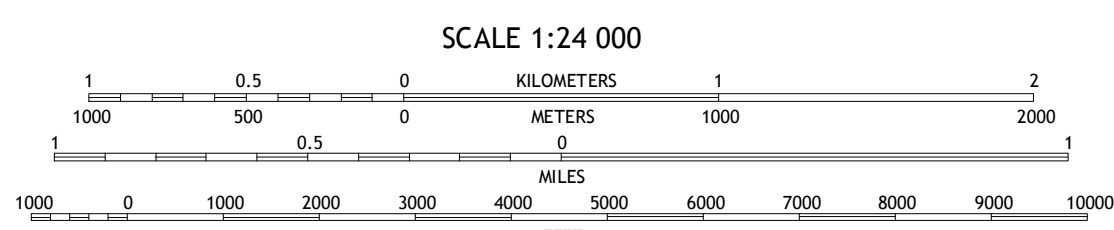
Produced by the United States Geological Survey
 North American Datum of 1983 (NAD83)
 World Geodetic System of 1984 (WGS84). Projection and
 1 000-meter grid: Universal Transverse Mercator, Zone 15S
 10 000-foot ticks: Louisiana Coordinate System of 1983 (north
 zone)

This map is not a legal document. Boundaries may be
 generalized for this map scale. Private lands within government
 reservations may not be shown. Obtain permission before
 entering private lands.

Imagery.....NAIP, June 2013
 Roads.....HERE, ©2013 - 2014
 Names.....GNIS, 2015
 Hydrography.....National Hydrography Dataset, 2013
 Contours.....National Elevation Dataset, 2011
 Boundaries.....Multiple sources; see metadata file 1972 - 2015
 Public Land Survey System.....BLM, 2015



U.S. National Grid	
100,000 m Square ID	WR
Grid Zone Designation	15S



CONTOUR INTERVAL 10 FEET
 NORTH AMERICAN VERTICAL DATUM OF 1988

This map was produced to conform with the
 National Geospatial Program US Topo Product Standard, 2011.
 A metadata file associated with this product is draft version 0.6.18



1	2	3
4	5	6
7	8	

ADJOINING QUADRANGLES

ROAD CLASSIFICATION

Expressway		Local Connector	
Secondary Hwy		Local Road	
Ramp		4WD	
Interstate Route		US Route	
		State Route	

- 1 Simsboro
- 2 Ruston West
- 3 Ruston East
- 4 Wilson Creek
- 5 Vernon
- 6 Mount Olive
- 7 Jonesboro North
- 8 Curr Creek

CLAY, LA
 2015

