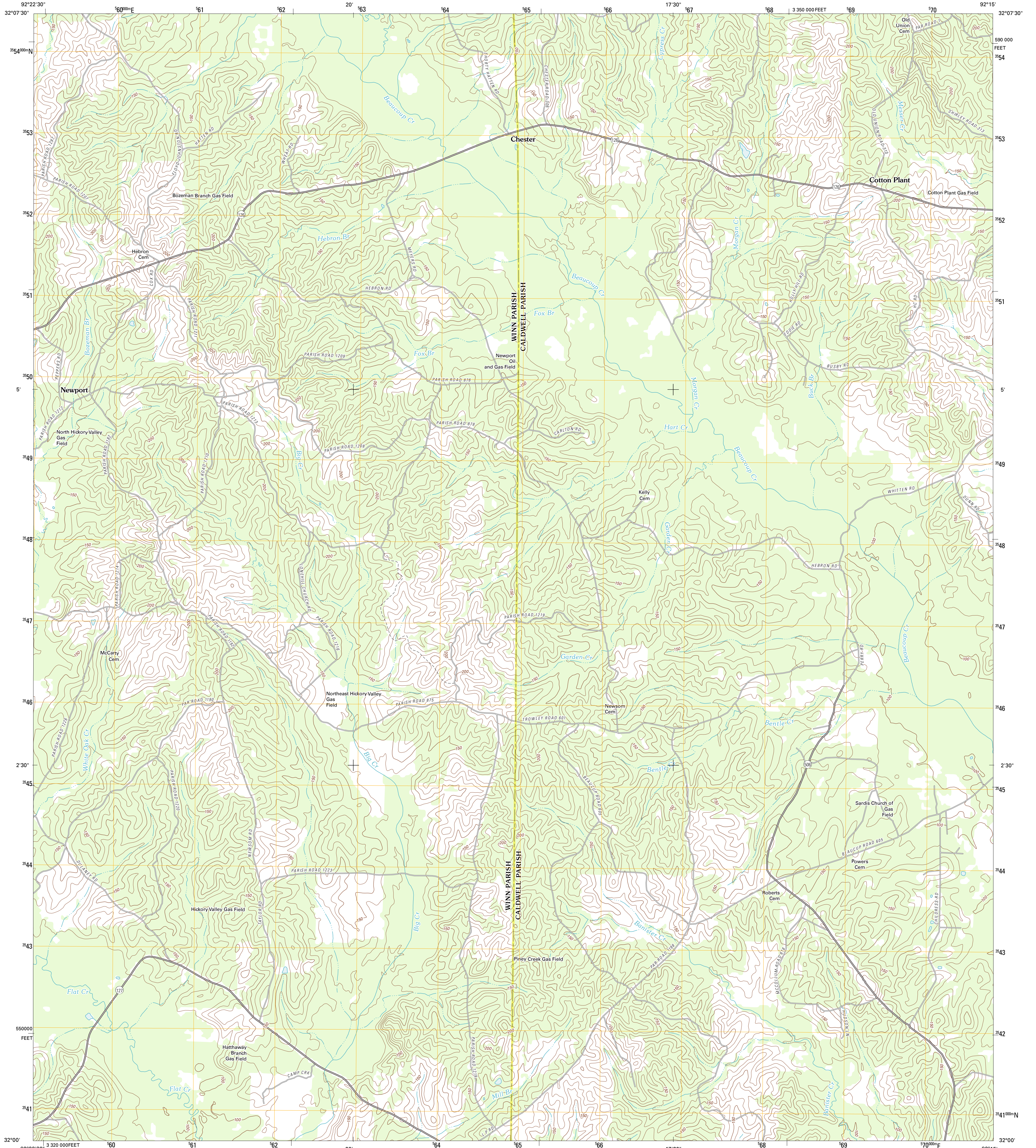




U.S. DEPARTMENT OF THE INTERIOR
U. S. GEOLOGICAL SURVEY



COTTON PLANT QUADRANGLE
LOUISIANA
7.5-MINUTE SERIES

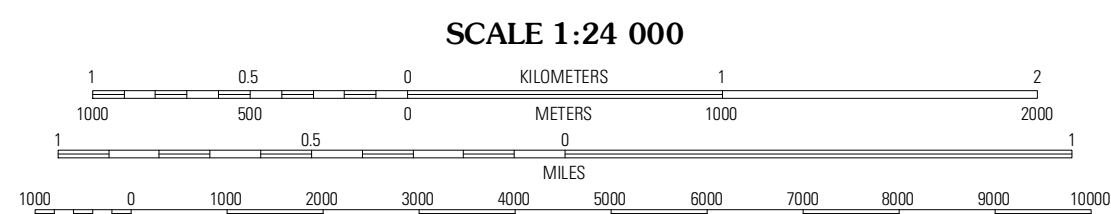


Produced by the United States Geological Survey
North American Datum of 1983 (NAD83)
World Geodetic System of 1984 (WGS84). Projection and
1 000-meter grid: Universal Transverse Mercator, Zone 15S
10 000-foot ticks: Louisiana Coordinate System of 1983
(north zone)

Imagery.....NAP, May 2010 - June 2010
Roads.....1:2006-2011 TomTom
Names.....GNIS, 2011
Hydrography.....National Hydrography Dataset, 2010
Contours.....National Elevation Dataset, 2011
Boundaries.....Census, IBWC, IBC, USGS, 1972 - 2010

UTM GRID AND 2012 MAGNETIC NORTH
DECLINATION AT CENTER OF SHEET

| | |
|-----------------------|---------------------|
| U.S. National Grid | 100,000-m Square ID |
| WR | |
| Grid Zone Designation | 15S |



CONTOUR INTERVAL 10 FEET
NORTH AMERICAN VERTICAL DATUM OF 1988

This map was produced to conform with the
National Geospatial Program US Topo Product Standard, 2011.
A metadata file associated with this product is draft version 0.6.1



QUADRANGLE LOCATION

| | | |
|------------|--------------|-----------|
| Womack | Viven | Blankston |
| Sikes | Cotton Plant | Clark |
| Flat Creek | Olla West | Olla East |

ADJOINING 7.5 QUADRANGLES

ROAD CLASSIFICATION

Interstate Route State Route
US Route Local Road
Ramp 4WD

Interstate Route US Route State Route

COTTON PLANT, LA
2012