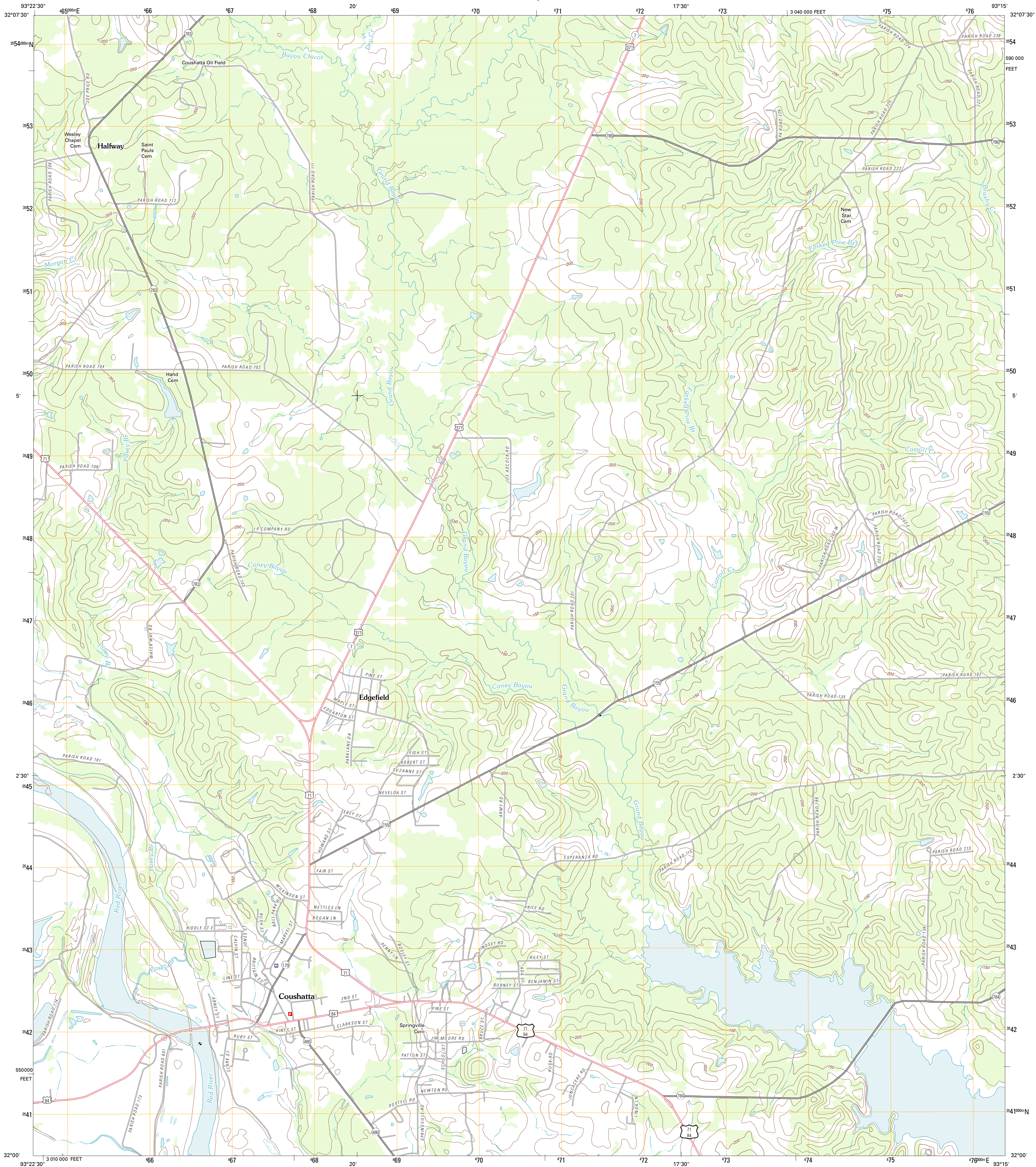




U.S. DEPARTMENT OF THE INTERIOR
U. S. GEOLOGICAL SURVEY

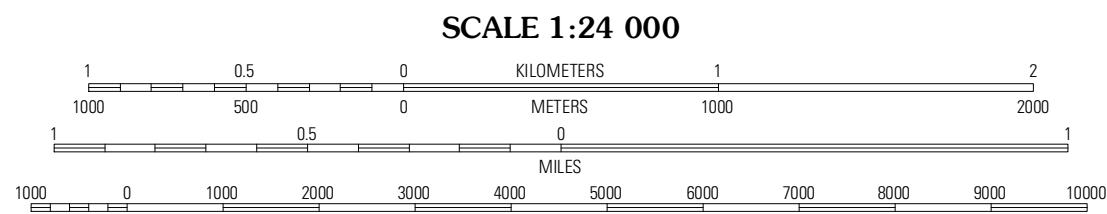
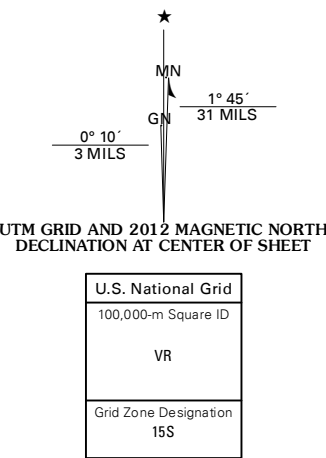


COUSHATTA QUADRANGLE
LOUISIANA-RED RIVER PARISH
7.5-MINUTE SERIES



Produced by the United States Geological Survey
North American Datum of 1983 (NAD83)
World Geodetic System of 1984 (WGS84). Projection and
1 000-meter grid; Universal Transverse Mercator, Zone 15S
10 000-foot ticks; Louisiana Coordinate System of 1983
(north zone)

Imagery.....NAIP, June 2010 - August 2010
Roads.....©2006-2011 TomTom
Names.....GNIS, 2011
Hydrography.....National Hydrography Dataset, 2010
Contours.....National Elevation Dataset, 2008
Boundaries.....Census, IBWC, IBC, USGS, 1972 - 2010

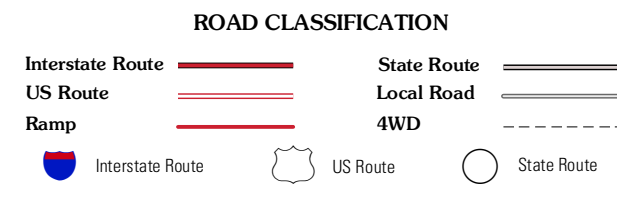


CONTOUR INTERVAL 10 FEET
NORTH AMERICAN VERTICAL DATUM OF 1988
This map was produced to conform with the
National Geospatial Program US Topo Product Standard, 2011.
A metadata file associated with this product is draft version 0.6.1



East Point	Hall Summit	Boy
Harmon	Coushatta	Martin
Evelyn	Hanna	Fairview Alpha

ADJOINING 7.5' QUADRANGLES



COUSHATTA, LA
2012