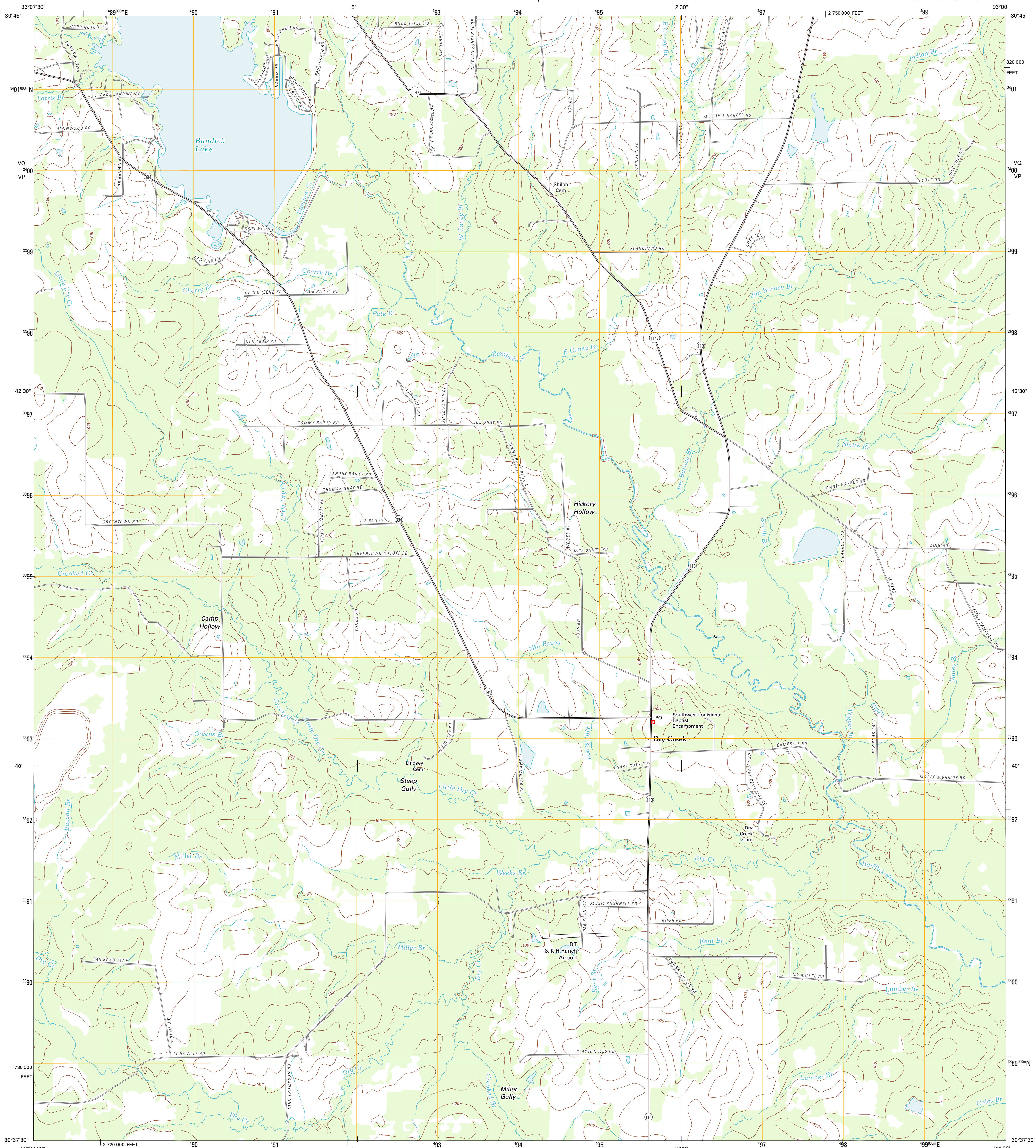




U.S. DEPARTMENT OF THE INTERIOR  
U. S. GEOLOGICAL SURVEY

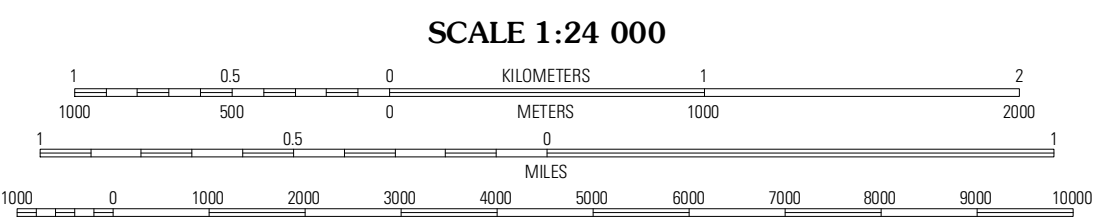
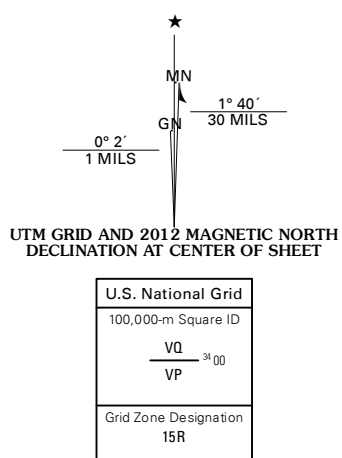


DRY CREEK QUADRANGLE  
LOUISIANA-BEAUREGARD PARISH  
7.5-MINUTE SERIES



Produced by the United States Geological Survey  
North American Datum of 1983 (NAD83)  
World Geodetic System of 1984 (WGS84) Projection and  
1 000-meter grid: Universal Transverse Mercator, Zone 15R  
10 000-foot ticks: Louisiana Coordinate System of 1983  
(south zone)

Imagery: NAD, May 2010  
Roads: ©2006-2011, TomTom  
Names: GNS, 2011  
Hydrography: National Hydrography Dataset, 2010  
Contours: National Elevation Dataset, 2008  
Boundaries: Census, BWC, IBC, USGS, 1972 - 2010



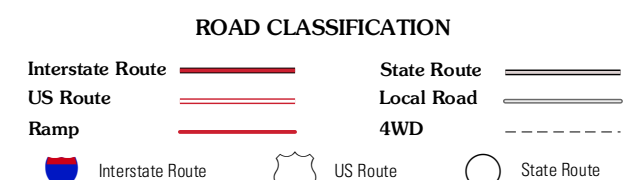
This map was produced to conform with the  
National Geospatial Program US Topo Product Standard, 2011.  
A metadata file associated with this product is draft version 0.6.1



QUADRANGLE LOCATION

|                |           |          |
|----------------|-----------|----------|
| Bonest Creek   | Sugartown | Grant    |
| Redhead Branch | Dry Creek | Mitte    |
| Longville      | Reeves    | Le Blanc |

ADJOINING 7.5' QUADRANGLES



DRY CREEK, LA  
2012