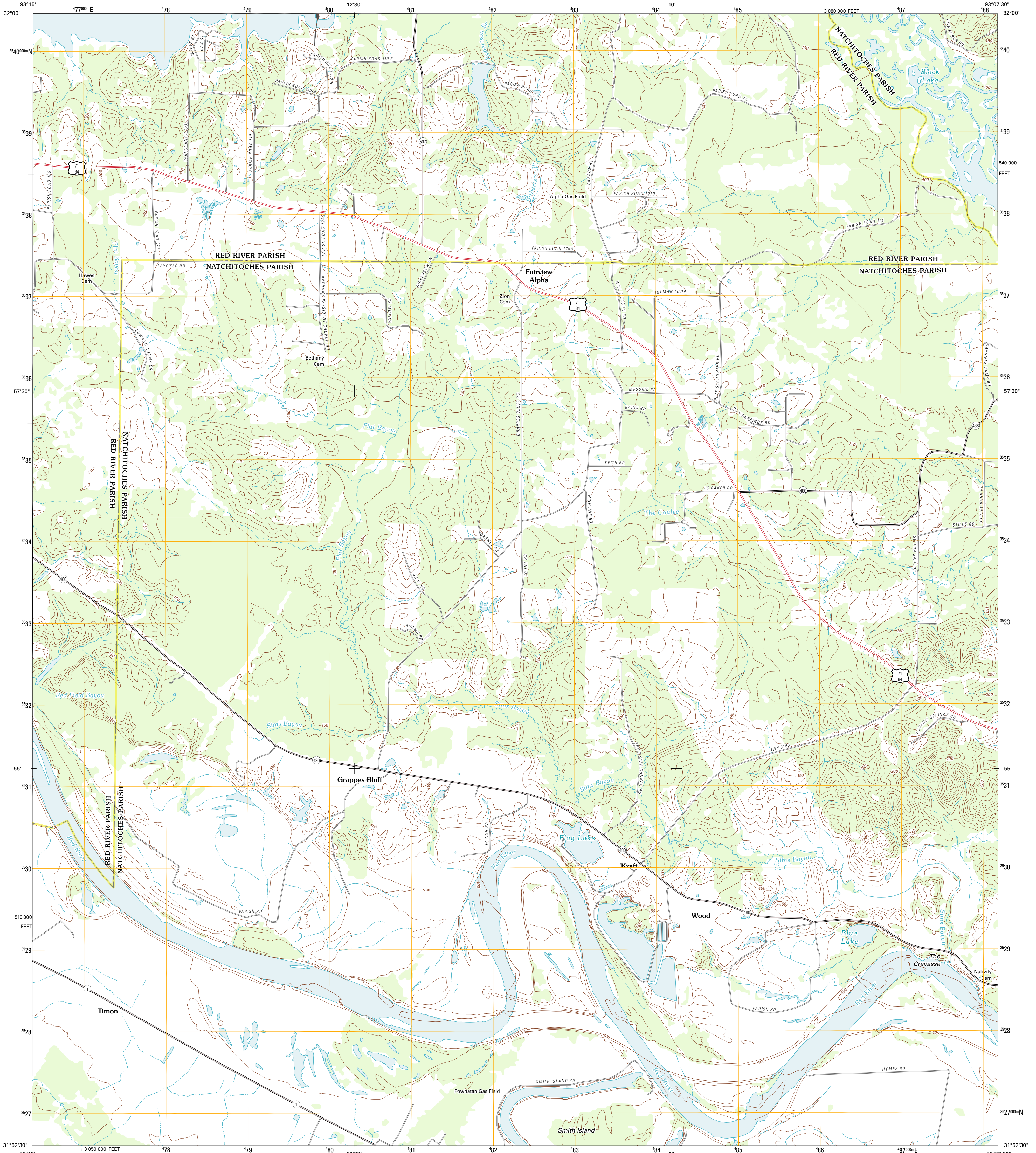




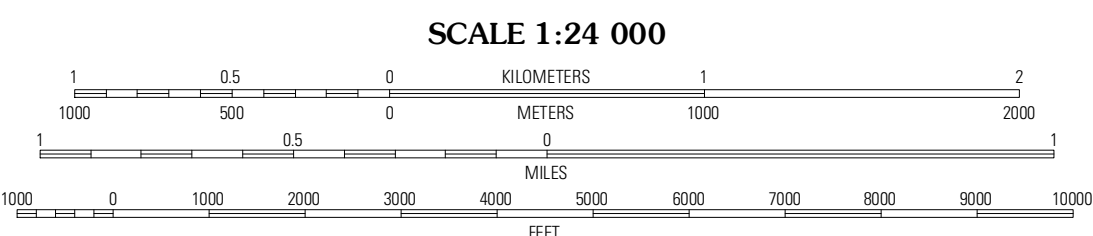
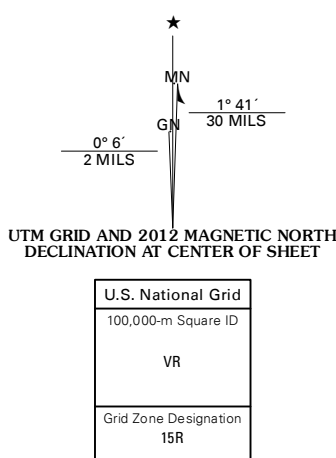
U.S. DEPARTMENT OF THE INTERIOR  
U. S. GEOLOGICAL SURVEY



FAIRVIEW ALPHA QUADRANGLE  
LOUISIANA  
7.5-MINUTE SERIES



Produced by the United States Geological Survey  
North American Datum of 1983 (NAD83)  
World Geodetic System of 1984 (WGS84) Projection and  
1 000-meter grid; Universal Transverse Mercator, Zone 15R  
10 000-foot ticks; Louisiana Coordinate System of 1983  
(north zone)



CONTOUR INTERVAL 10 FEET  
NORTH AMERICAN VERTICAL DATUM OF 1988

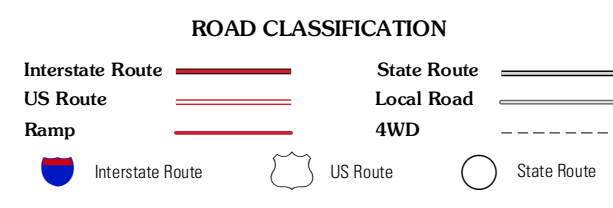
This map was produced to conform with the National Geospatial Program US Topo Product Standard, 2011. A metadata file associated with this product is draft version 0.6.1



QUADRANGLE LOCATION

Coushatta	Martin	Chestnut
Hanna	Fairview Alpha	Campit
Allen	Powhatan	Natchitoches North

ADJOINING 7.5 QUADRANGLES



FAIRVIEW ALPHA, LA  
2012