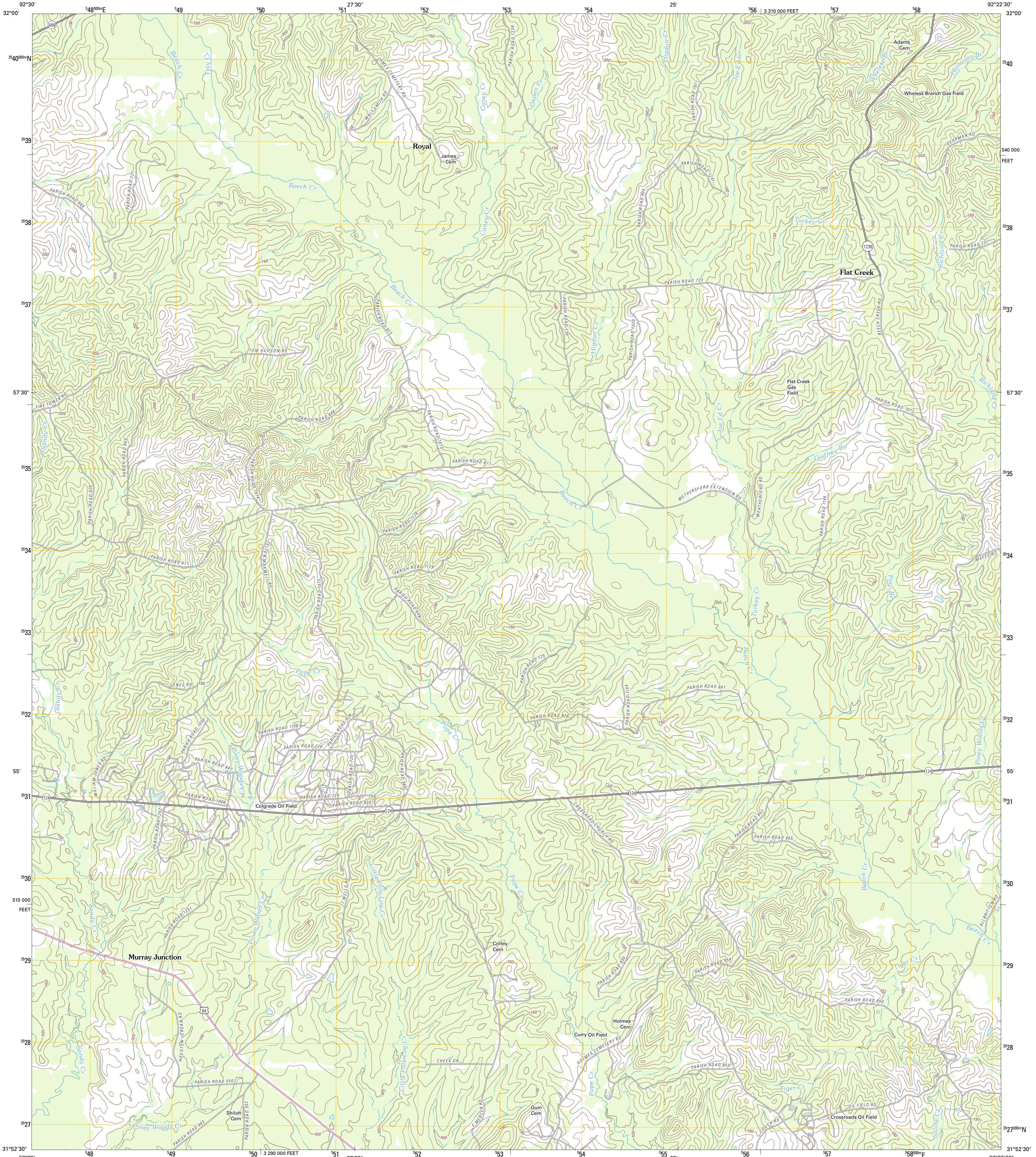




U.S. DEPARTMENT OF THE INTERIOR  
U. S. GEOLOGICAL SURVEY



FLAT CREEK QUADRANGLE  
LOUISIANA-WINN PARISH  
7.5-MINUTE SERIES

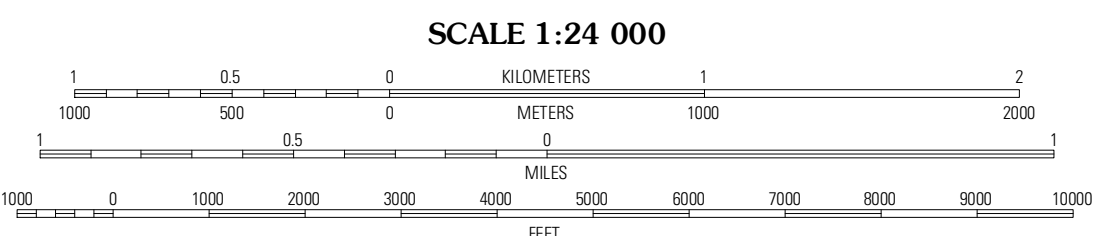


Produced by the United States Geological Survey  
North American Datum of 1983 (NAD83)  
World Geodetic System of 1984 (WGS84) Projection and  
1 000-meter grid; Universal Transverse Mercator, Zone 15R  
10 000-foot ticks; Louisiana Coordinate System of 1983  
(north zone)

Imagery: NAD, June 2010  
©2006-2011 TomTom  
Names: GNIS, 2011  
Hydrography: National Hydrography Dataset, 2010  
Contours: National Elevation Dataset, 2011  
Boundaries: Census, IBWC, IBC, USGS, 1972 - 2010

UTM GRID AND 2012 MAGNETIC NORTH DECLINATION AT CENTER OF SHEET

U.S. National Grid  
100,000-m Source ID  
WR  
Grid Zone Designation  
15R



CONTOUR INTERVAL 10 FEET  
NORTH AMERICAN VERTICAL DATUM OF 1988

This map was produced to conform with the  
National Geospatial Program US Topo Product Standard, 2011.  
A metadata file associated with this product is draft version 0.6.1



QUADRANGLE LOCATION

Hudson	Sikes	Cotton Plant
Winfield East	Flat Creek	Olla West
Packton	Georgetown	Tullos

ADJOINING 7.5 QUADRANGLES

ROAD CLASSIFICATION

Interstate Route

US Route

Ramp

State Route

Local Road

4WD

FLAT CREEK, LA  
2012