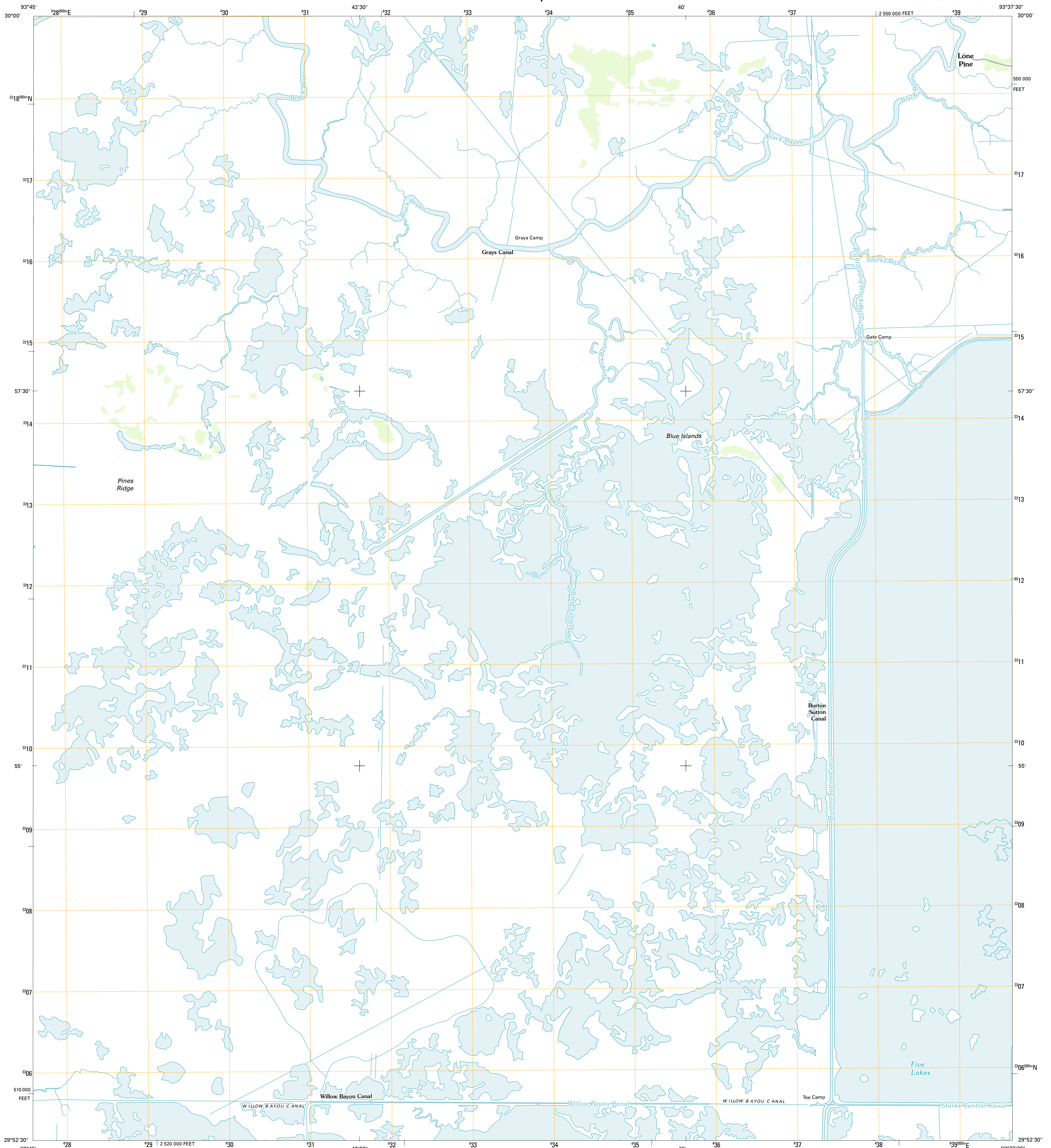




U.S. DEPARTMENT OF THE INTERIOR
U. S. GEOLOGICAL SURVEY

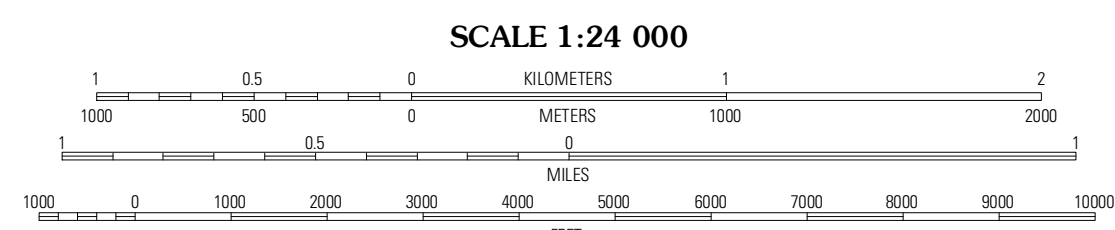
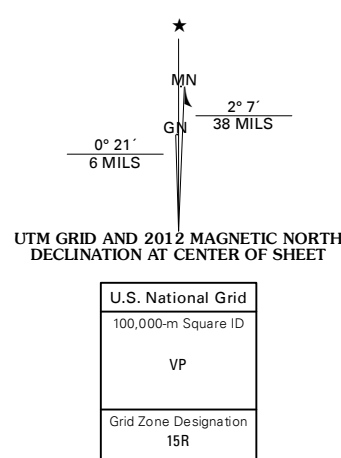


GREENS BAYOU QUADRANGLE
LOUISIANA-CAMERON PARISH
7.5-MINUTE SERIES



Produced by the United States Geological Survey
North American Datum of 1983 (NAD83)
World Geodetic System of 1984 (WGS84). Projection and
1 000-meter grid: Universal Transverse Mercator, Zone 15R
10 000-foot ticks: Louisiana Coordinate System of 1983
(south zone)

Imagery.....NAP, May 2010
Roads.....©2006-2011 TomTom
Names.....GNIS, 2011
Hydrography.....National Hydrography Dataset, 2010
Contours.....Not Available
Boundaries.....Census, IBWC, IBC, USGS, 1972 - 2010



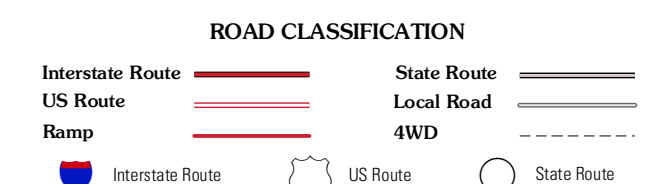
CONTOURS NOT PRESENT BECAUSE AVAILABLE ELEVATION
DATA DO NOT MEET ACCURACY REQUIREMENTS

This map was produced to conform with the
National Geospatial Program US Topo Product Standard, 2011.
A metadata file associated with this product is draft version 0.6.1



QUADRANGLE LOCATION

Orangefield	Orange	Cameron Farms
West of Greens Bayou	Greens Bayou	F-R Ranch
West of Johnson Bayou	Johnson Bayou	Peveto Beach



GREENS BAYOU, LA
2012

ADJOINING 7.5 QUADRANGLES