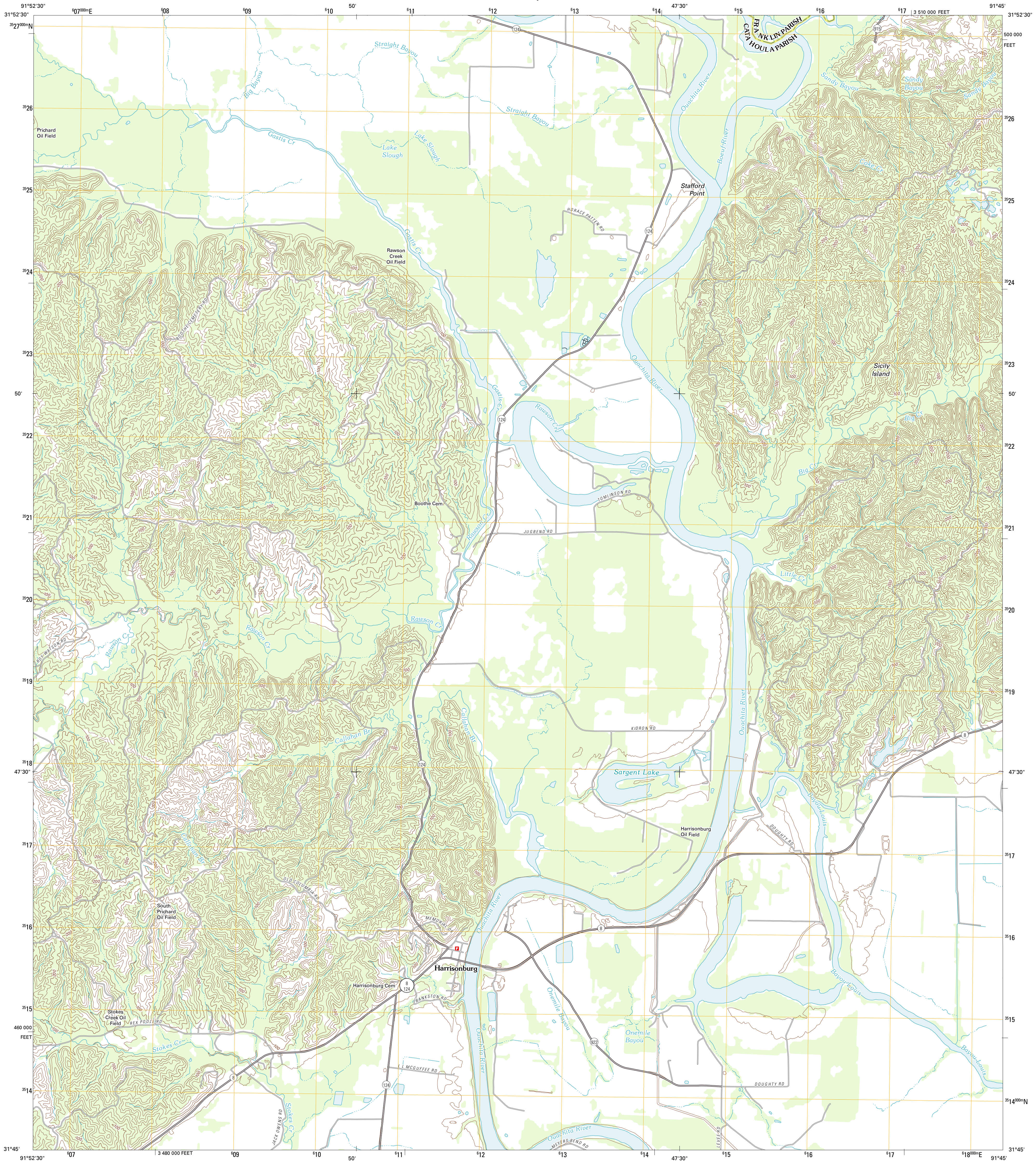




U.S. DEPARTMENT OF THE INTERIOR
U. S. GEOLOGICAL SURVEY

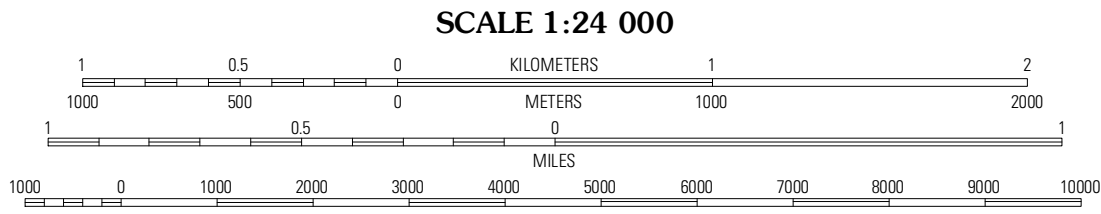
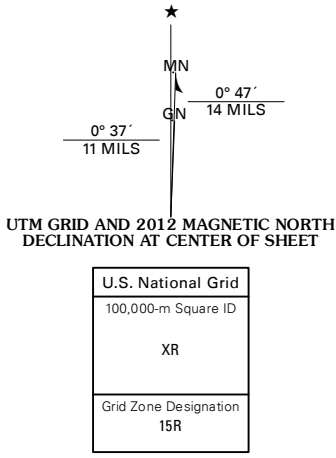


HARRISONBURG QUADRANGLE
LOUISIANA
7.5-MINUTE SERIES



Produced by the United States Geological Survey
North American Datum of 1983 (NAD83)
World Geodetic System of 1984 (WGS84) Projection and
1 000-meter grid: Universal Transverse Mercator, Zone 15R
10 000-foot ticks: Louisiana Coordinate System of 1983
(north zone)

Imagery.....NAIP, June 2010
Roads.....©2006-2011 TomTom
Names.....GNIS, 2011
Hydrography.....National Hydrography Dataset, 2010
Contours.....National Elevation Dataset, 2011
Boundaries.....Census, IBWC, IBC, USGS, 1972 - 2010



CONTOUR INTERVAL 20 FEET
NORTH AMERICAN VERTICAL DATUM OF 1988
This map was produced to conform with the
National Geospatial Program US Topo Product Standard, 2011.
A metadata file associated with this product is draft version 0.6.1



| QUADRANGLE LOCATION | | |
|---------------------|------------------|---------------|
| Enterprise | Extension | Winer |
| Almwell | Harrisonburg | Sicily Island |
| Manifest | Jonesville North | Dunbarton |

| ROAD CLASSIFICATION | | |
|---------------------|-------------|------------|
| Interstate Route | State Route | Local Road |
| US Route | 4WD | |
| Ramp | | |

HARRISONBURG, LA
2012