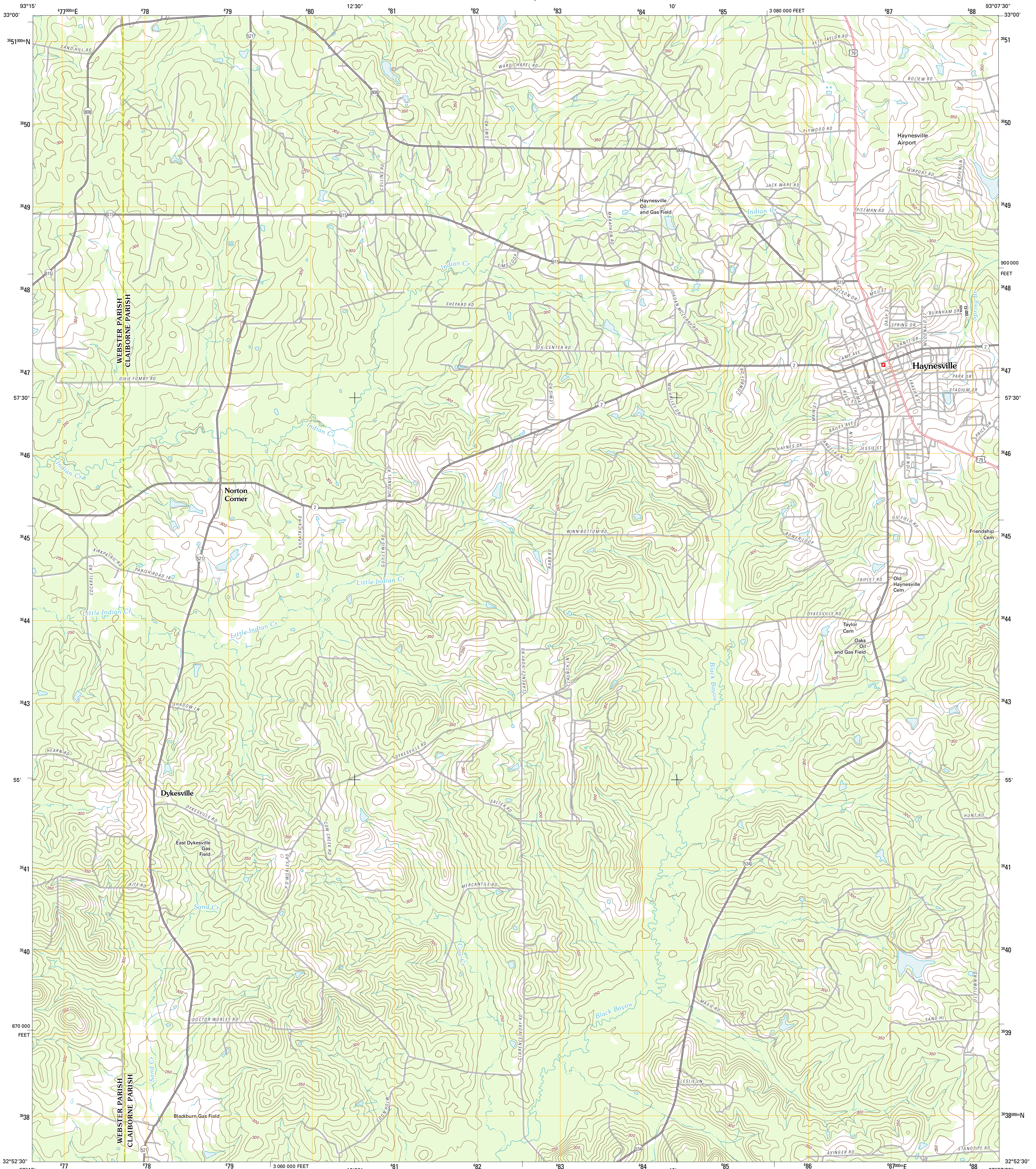




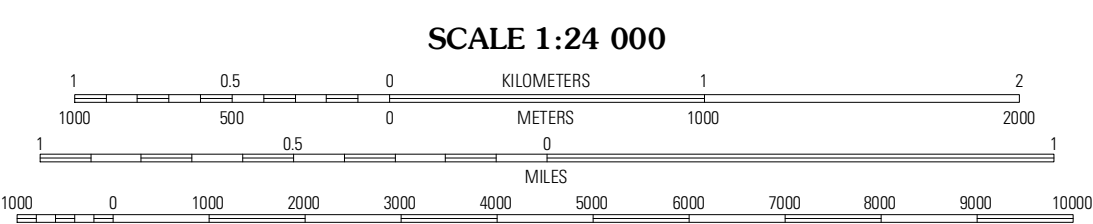
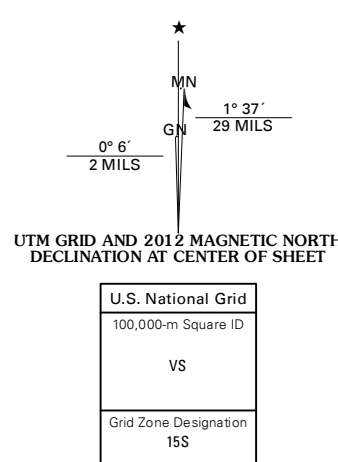
U.S. DEPARTMENT OF THE INTERIOR
U. S. GEOLOGICAL SURVEY



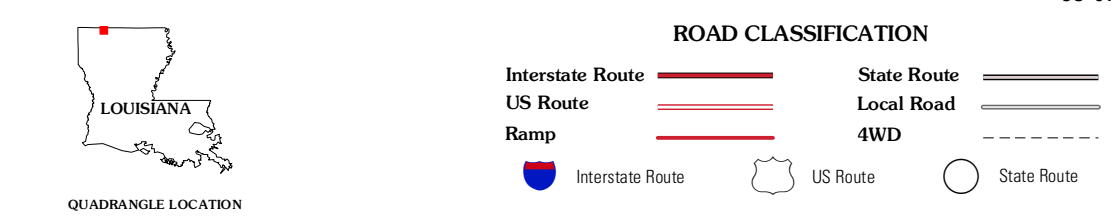
HAYNESVILLE WEST QUADRANGLE
LOUISIANA
7.5-MINUTE SERIES



Produced by the United States Geological Survey
North American Datum of 1983 (NAD83)
World Geodetic System of 1984 (WGS84). Projection and
1 000-meter grid: Universal Transverse Mercator, Zone 15S
10 000-foot ticks: Louisiana Coordinate System of 1983
(north zone)



CONTOUR INTERVAL 10 FEET
NORTH AMERICAN VERTICAL DATUM OF 1988
This map was produced to conform with the
National Geospatial Program US Topo Product Standard, 2011.
A metadata file associated with this product is draft version 0.6.1



QUADRANGLE LOCATION

Walker	Emerson	Emerson SE
Shonglo	Haynesville West	Haynesville East
Leton	Blackburn	Homer

Images.....NAP, May 2010
Roads.....2006-2011 TomTom
Names.....GNIS, 2011
Hydrography.....National Hydrography Dataset, 2010
Contours.....National Elevation Dataset, 2011
Boundaries.....Census, IBWC, IBC, USGS, 1972 - 2010

UTM Grid and 2012 Magnetic North Declination at Center of Sheet

U.S. National Grid
100,000-m Square ID
VS
Grid Zone Designation
15S

ADJOINING 7.5' QUADRANGLES

HAYNESVILLE WEST, LA
2012