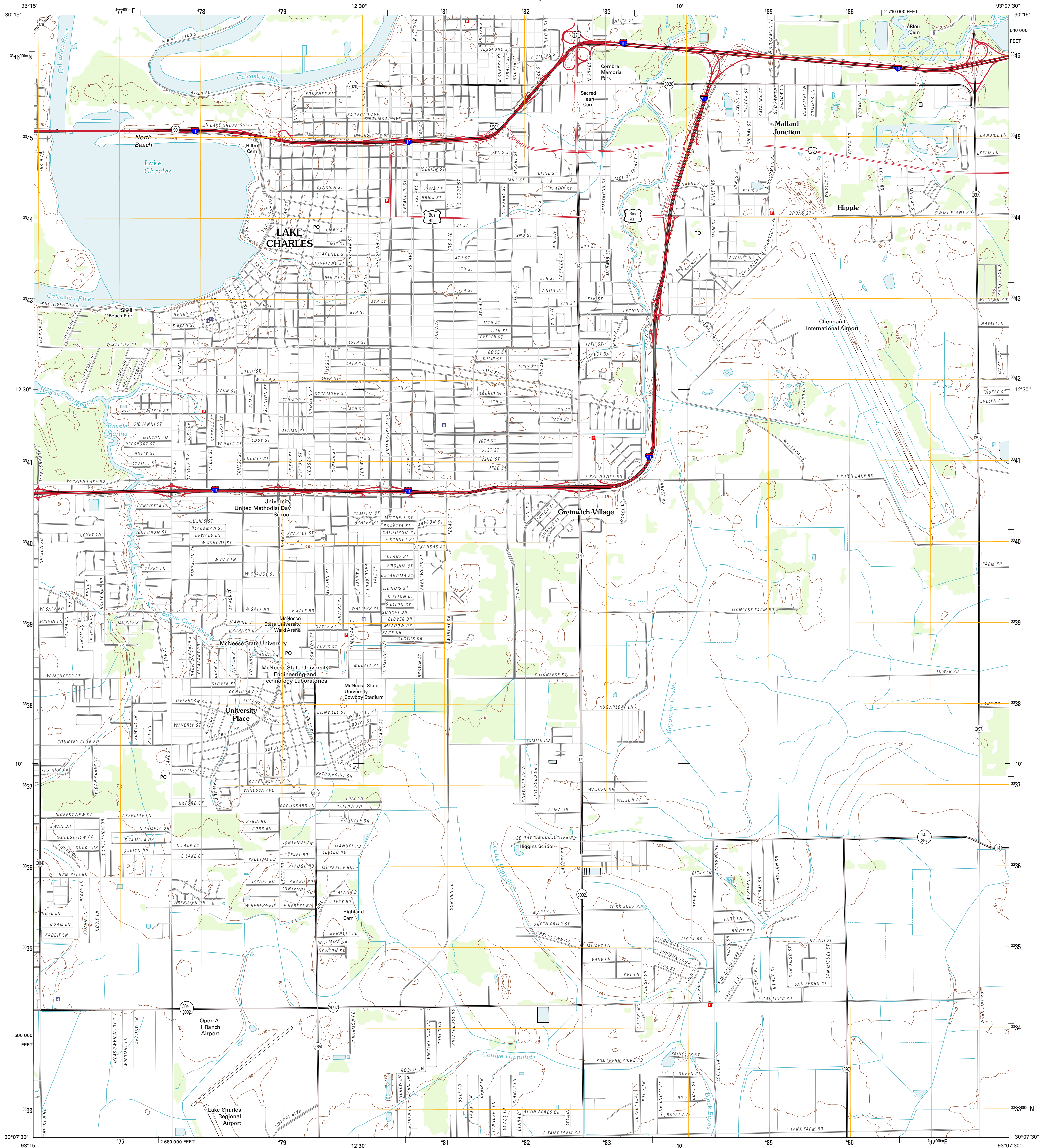




U.S. DEPARTMENT OF THE INTERIOR  
U. S. GEOLOGICAL SURVEY



LAKE CHARLES QUADRANGLE  
LOUISIANA-CALCASIEU PARISH  
7.5-MINUTE SERIES

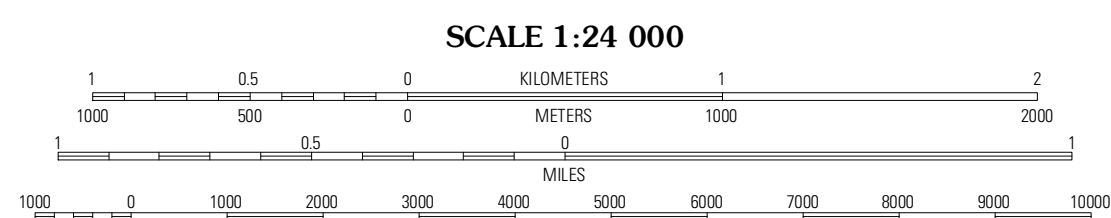


Produced by the United States Geological Survey  
North American Datum of 1983 (NAD83)  
World Geodetic System of 1984 (WGS84) Projection and  
1000-meter grid: Universal Transverse Mercator, Zone 15R  
10 000-foot ticks: Louisiana Coordinate System of 1983  
(south zone)

Imagery: NAIP, Map 2010 - July 2010  
Roads: 2006-2011 TomTom  
Names: GNIS, 2011  
Hydrography: National Hydrography Dataset, 2010  
Contours: National Elevation Dataset, 2008  
Boundaries: Census, IBCW, IBC, USGS, 1972 - 2010

UTM GRID and 2012 MAGNETIC NORTH  
DECLINATION AT CENTER OF SHEET

U.S. National Grid
100,000+ Square ID
VP
Grid Zone Designation
15R



SCALE 1:24 000  
CONTOUR INTERVAL 5 FEET  
NORTH AMERICAN VERTICAL DATUM OF 1988  
This map was produced to conform with the  
National Geospatial Program US Topo Product Standard, 2011.  
A metadata file associated with this product is draft version 0.6.1



Buhler	Moss Bluff	Hecker
Westlake	Lake Charles	Iowa
Moss	Lake	Lake

ADJOINING 7.5 QUADRANGLES

ROAD CLASSIFICATION	
Interstate Route	State Route
US Route	Local Road
Ramp	4WD

LAKE CHARLES, LA  
2012