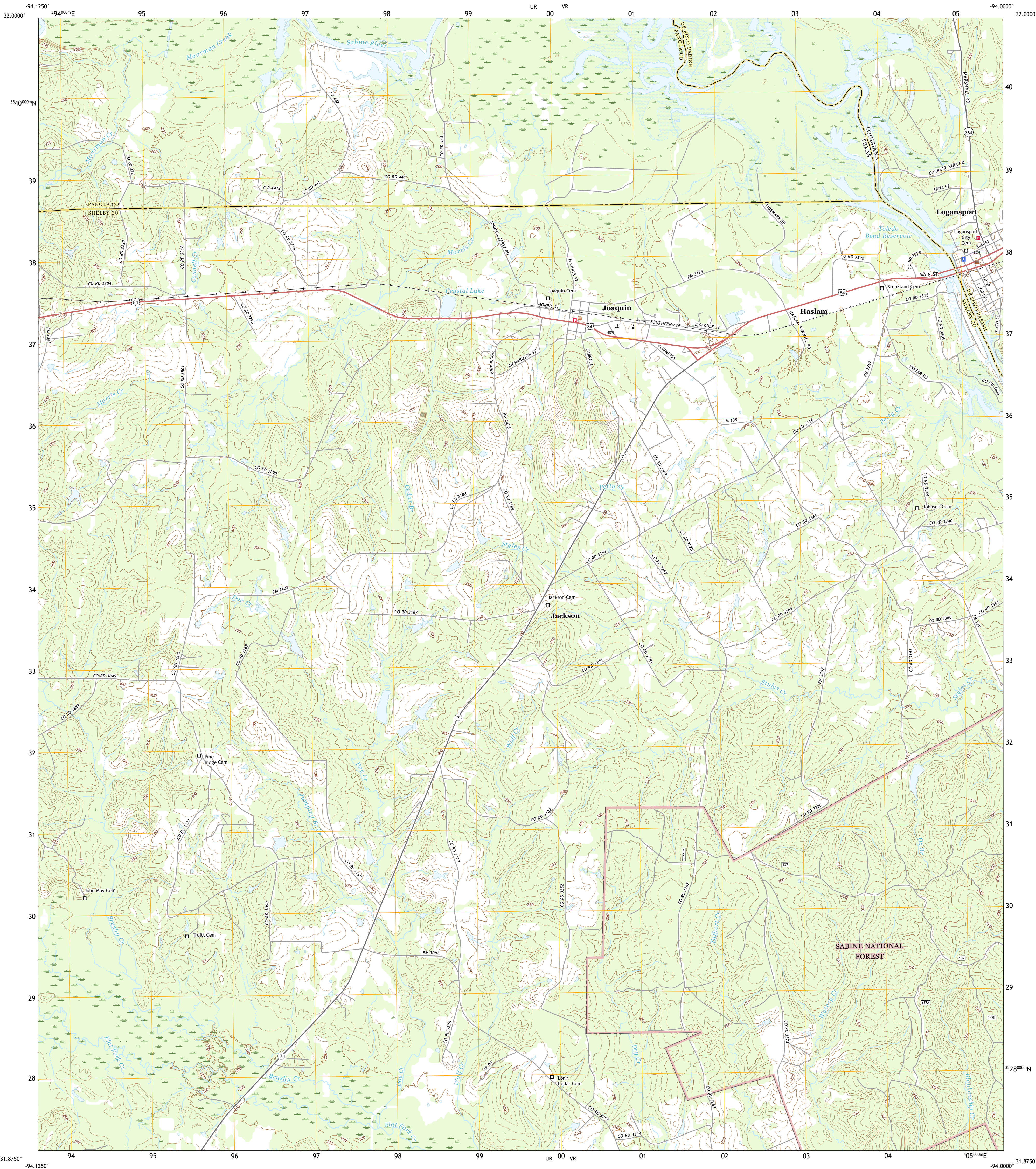




U.S. DEPARTMENT OF THE INTERIOR  
U.S. GEOLOGICAL SURVEY

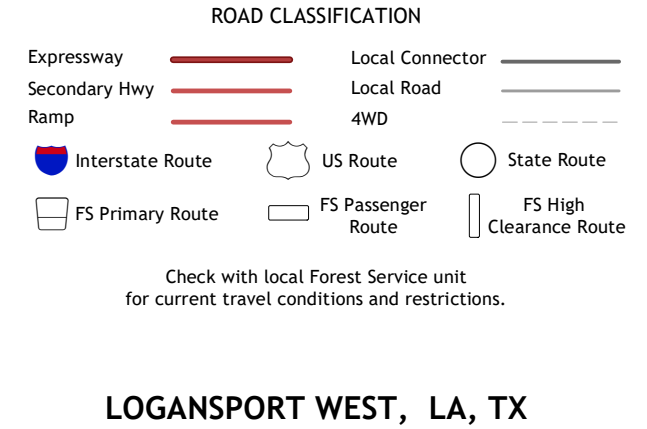
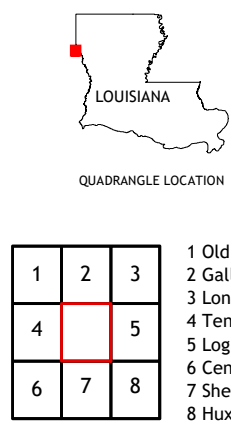
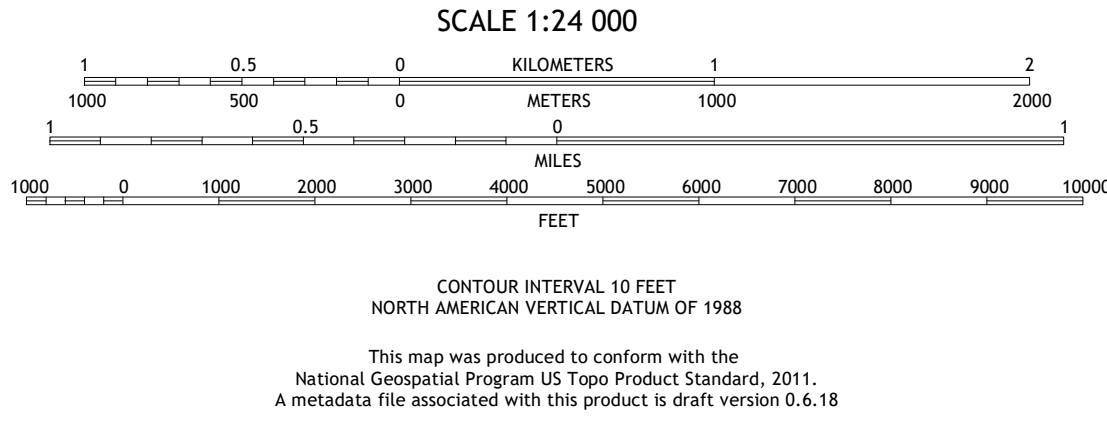
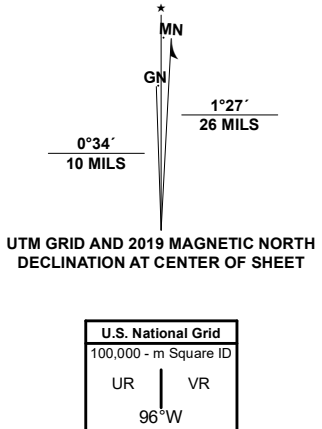


LOGANSPOUR WEST QUADRANGLE  
LOUISIANA - TEXAS  
7.5-MINUTE SERIES



**Produced by the United States Geological Survey**  
North American Datum of 1983 (NAD83)  
World Geodetic System of 1984 (WGS84). Projection and  
1 000-meter grid: Universal Transverse Mercator, Zone 15R  
This map is not a legal document. Boundaries may be  
generalized for this map scale. Private lands within government  
reservations may not be shown. Obtain permission before  
entering private lands.

Imagery.....N.A.P., October 2016 - September 2019  
Roads.....U.S. Census Bureau, 2015 - 2018  
Data within US Forest Service Lands.....FSTopo  
with limited Forest Service updates, 2012 - 2017  
Names.....GNS, 1979 - 2020  
Hydrography.....National Hydrography Dataset, 1899 - 2018  
Contours.....National Elevation Dataset, 1998 - 2019  
Boundaries.....Multiple sources; see metadata file 2018 - 2019  
Public Land Survey System.....BLM, 2019  
Wetlands.....FWS National Wetlands Inventory 1980 - 1983



LOGANSPOUR WEST, LA, TX  
2020

