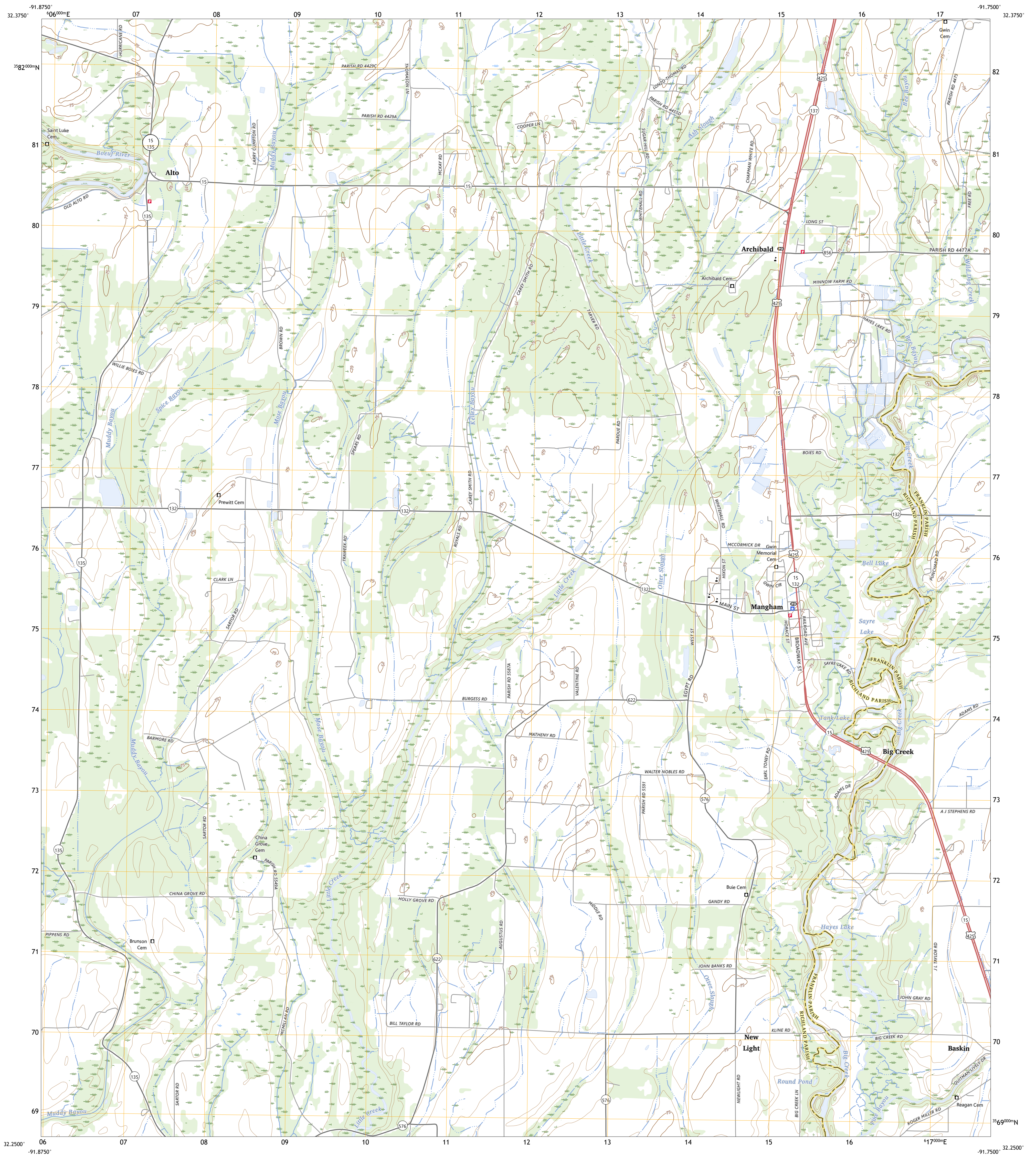




U.S. DEPARTMENT OF THE INTERIOR
U.S. GEOLOGICAL SURVEY



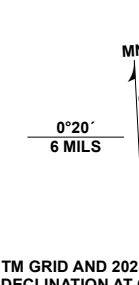
MANGHAM QUADRANGLE
LOUISIANA
7.5-MINUTE SERIES



32.3750°N 91.8750°W 32.2500°N 91.7500°W

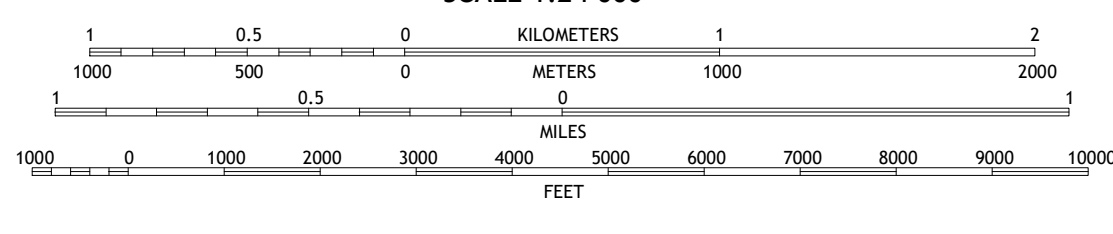
Produced by the United States Geological Survey

North American Datum of 1983 (NAD83)
World Geodetic System of 1984 (WGS84), Projection and
1 000-meter grid/Universal Transverse Mercator, Zone 15S
This map is not a legal document. Boundaries may be
generalized for this map scale. Private lands within government
reservations may not be shown. Obtain permission before
entering private lands.
Imagery.....NAIP, July 2019 - September 2019
Roads.....U.S. Census Bureau, 2015
Names.....GNS, 1980-2023
Hydrography.....National Hydrography Dataset, 2007 - 2023
Contours.....National Elevation Dataset, 2011
Boundaries.....Multiple sources: see metadata file 2021 - 2022
Public Land Survey System.....BLM, 2019
Wetlands.....FWS National Wetlands Inventory 1976 - 1976



UTM GRID AND 2023 MAGNETIC NORTH
DECLINATION AT CENTER OF SHEET

SCALE 1:24 000



CONTOUR INTERVAL 5 FEET
NORTH AMERICAN DATUM OF 1988
This map was produced to conform with the
National Geospatial Program US Topo Product Standard.



QUADRANGLE LOCATION

1	2	3
4	5	6
7	8	

ADJOINING QUADRANGLES

- 1 Crew Lake
- 2 Bee Bayou
- 3 Gilleyville
- 4 Baskinton
- 5 Hebert
- 6 Liddieville
- 7 Wilkesboro
- 8

ROAD CLASSIFICATION	
	Expressway
	Secondary Hwy
	Ramp
	Local Connector
	Local Road
	4WD
	US Route
	State Route

MANGHAM, LA
2024



US 7 6 4 3 0 0 4 3 6 9 1 7 9
NGA REF NO U S G S S X 2 4 K 2 7 4 5 3