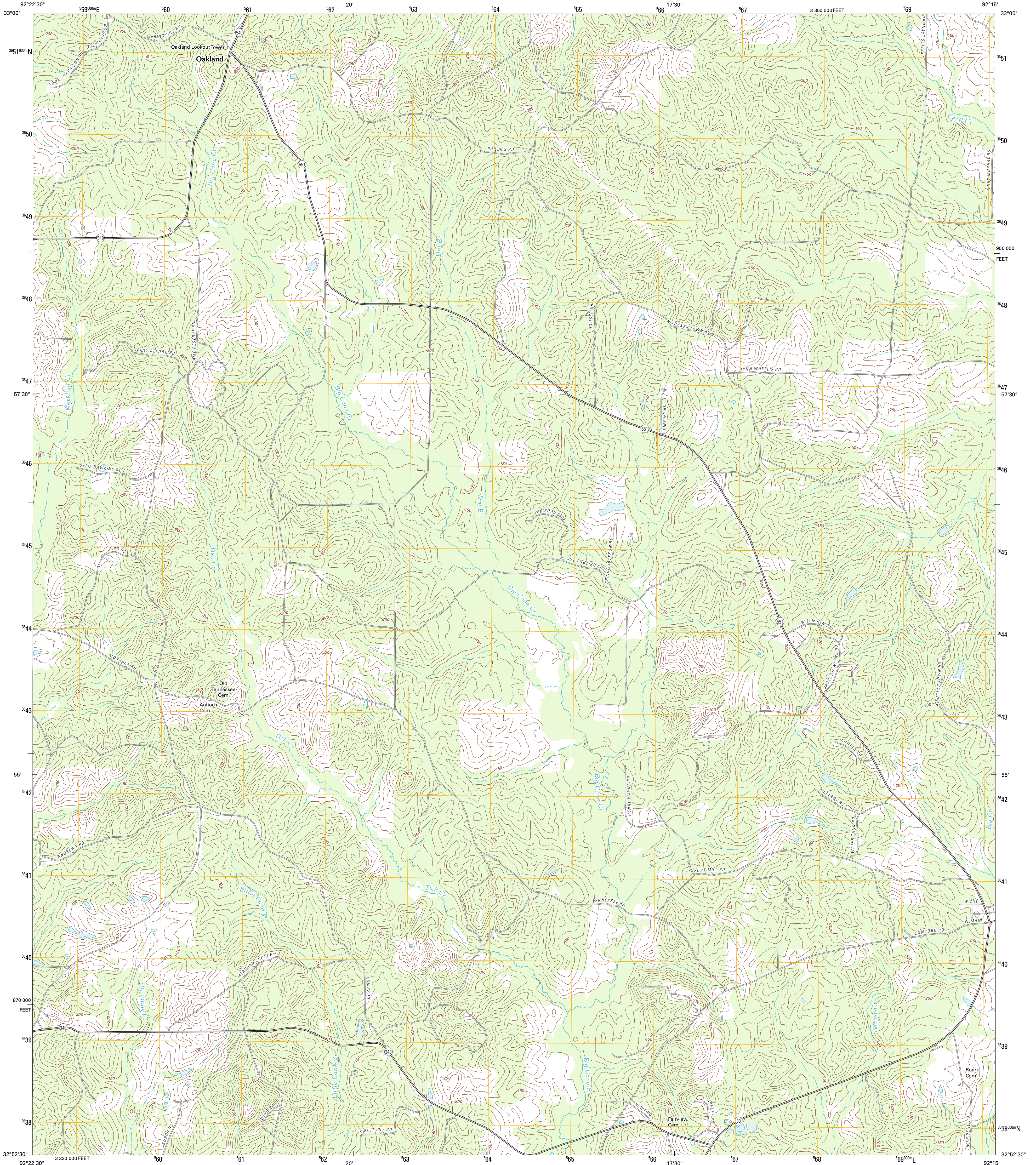




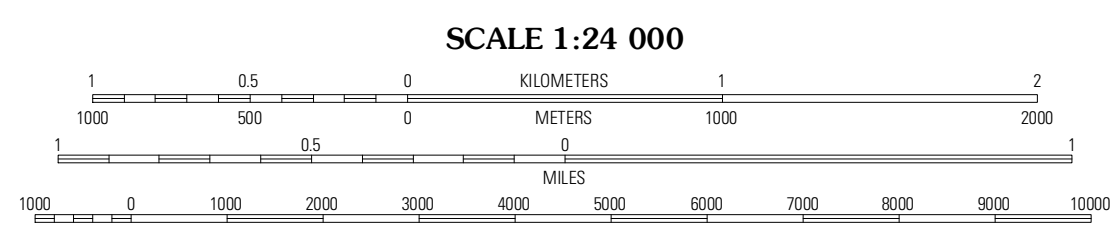
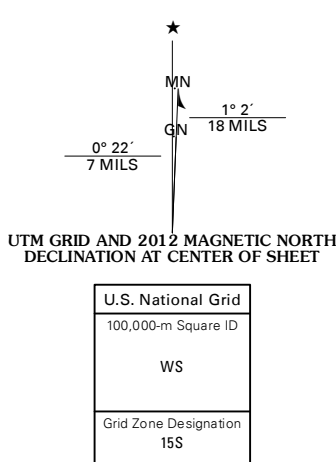
U.S. DEPARTMENT OF THE INTERIOR  
U. S. GEOLOGICAL SURVEY



MARION WEST QUADRANGLE  
LOUISIANA-UNION PARISH  
7.5-MINUTE SERIES



Produced by the United States Geological Survey  
North American Datum of 1983 (NAD83)  
World Geodetic System of 1984 (WGS84). Projection and  
1 000-meter grid: Universal Transverse Mercator, Zone 15S  
10 000-foot ticks: Louisiana Coordinate System of 1983  
(north zone)

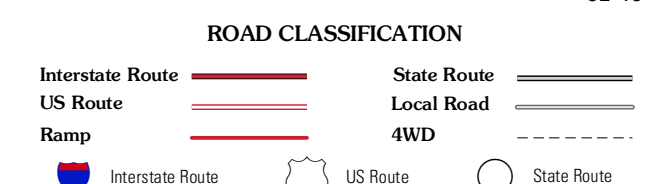


CONTOUR INTERVAL 10 FEET  
NORTH AMERICAN VERTICAL DATUM OF 1988  
This map was produced to conform with the  
National Geospatial Program US Topo Product Standard, 2011.  
A metadata file associated with this product is draft version 0.6.1



QUADRANGLE LOCATION

|              |             |             |
|--------------|-------------|-------------|
| Gardner      | Strong      | Hattig      |
| Truxno       | Marion West | Marion East |
| Farmersville | De Loure    | Halle       |



MARION WEST, LA  
2012

ADJOINING 7.5' QUADRANGLES