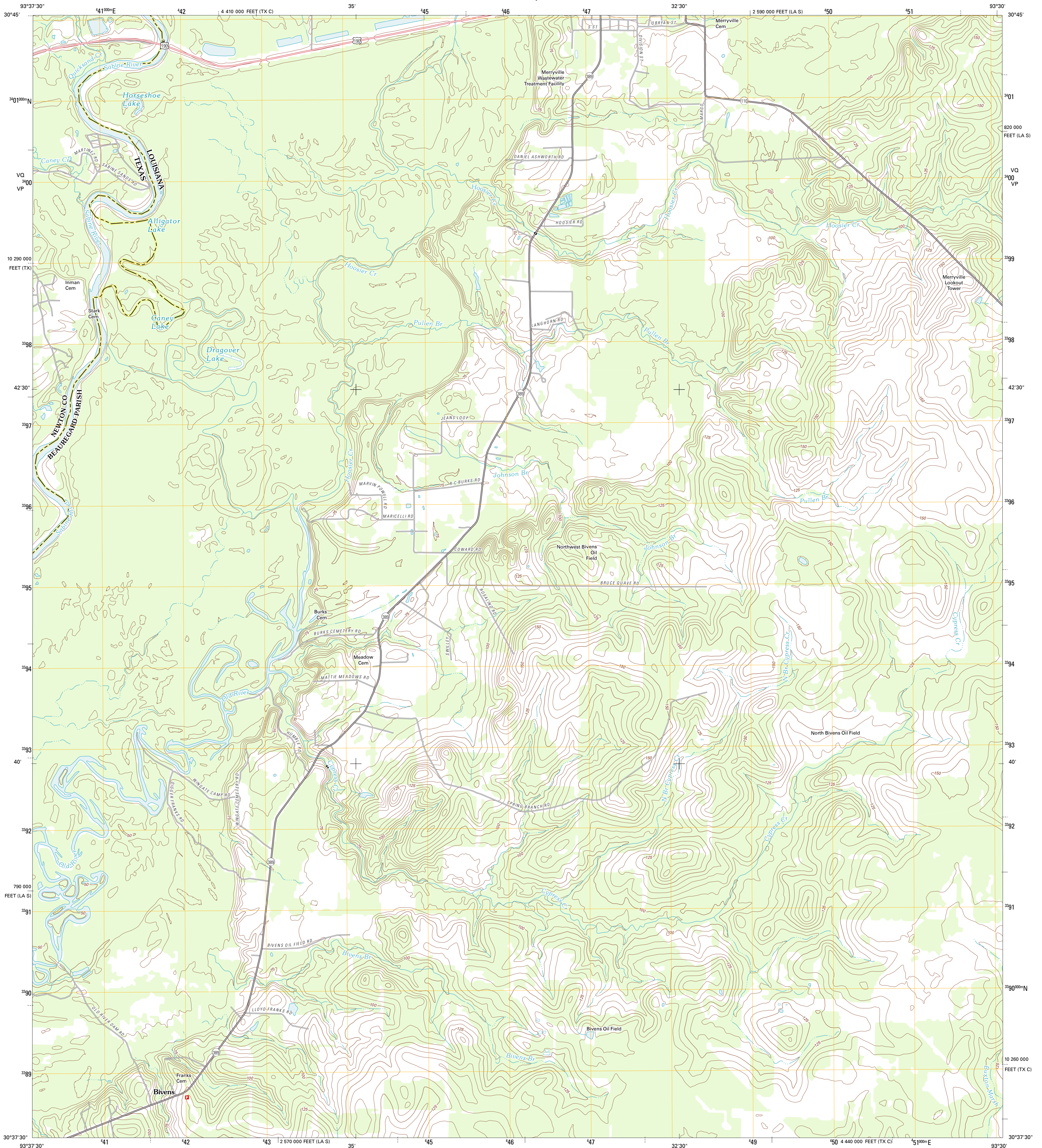




U.S. DEPARTMENT OF THE INTERIOR
U. S. GEOLOGICAL SURVEY

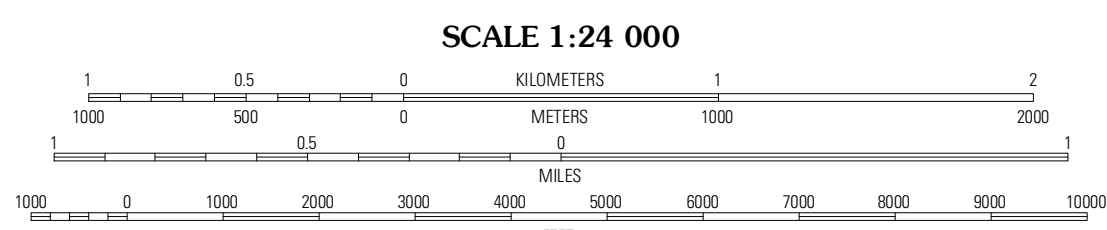
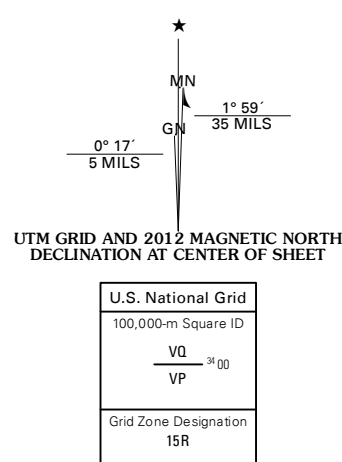


MERRYVILLE SOUTH QUADRANGLE
LOUISIANA-TEXAS
7.5-MINUTE SERIES



Produced by the United States Geological Survey
North American Datum of 1983 (NAD83)
World Geodetic System of 1984 (WGS84) Projection and
1 000-meter grid; Universal Transverse Mercator, Zone 15R
10 000-foot ticks; Louisiana Coordinate System of 1983
(south zone), Texas Coordinate System of 1983 (central zone)

Imagery: NAIP, May 2010 - July 2010
Roads: 2006-2011 TomTom
Names: GNS, 2011
Hydrography: National Hydrography Dataset, 2010
Contours: National Elevation Dataset, 2008
Boundaries: Census, IBWC, IBC, USGS, 1972 - 2010



CONTOUR INTERVAL 5 FEET
NORTH AMERICAN VERTICAL DATUM OF 1988

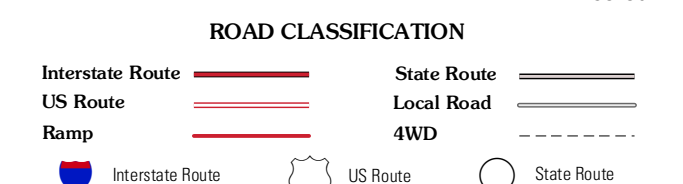
This map was produced to conform with the
National Geospatial Program US Topo Product Standard, 2011.
A metadata file associated with this product is draft version 0.6.1



QUADRANGLE LOCATION

Newton East	Merryville North	Neale
Bon Wier	Merryville South	Singer
Bancroft	Fields	Oretta

ADJOINING 7.5' QUADRANGLES



MERRYVILLE SOUTH, LA-TX
2012