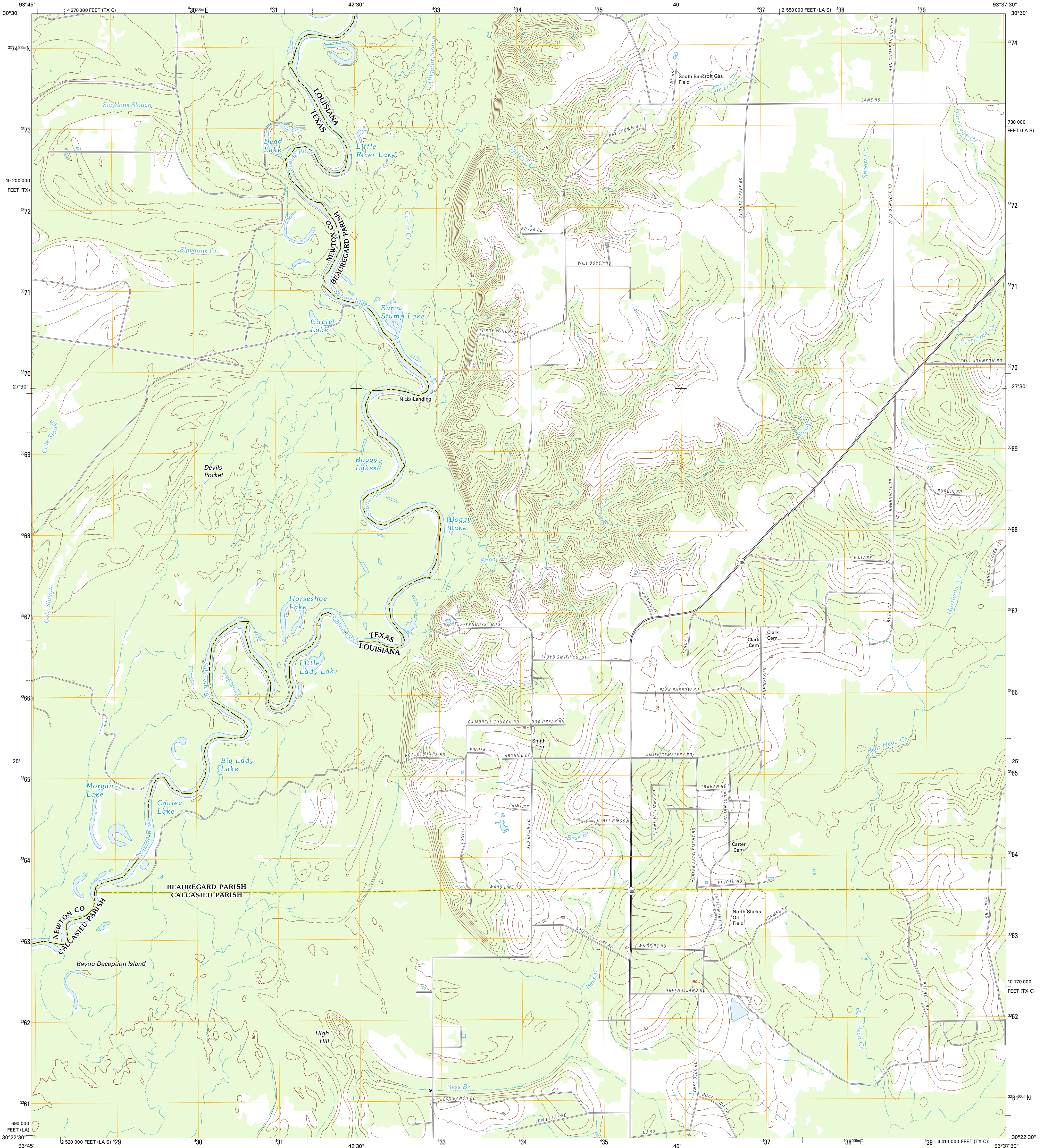




U.S. DEPARTMENT OF THE INTERIOR  
U. S. GEOLOGICAL SURVEY

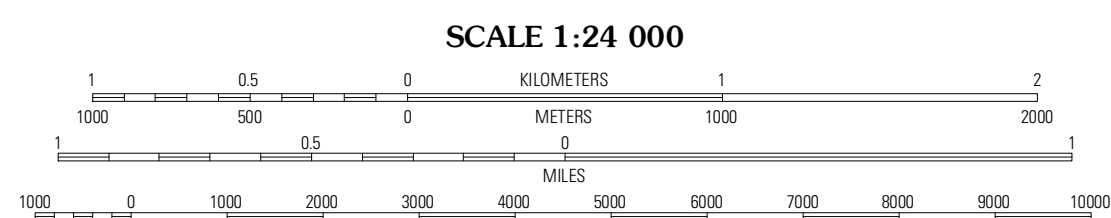
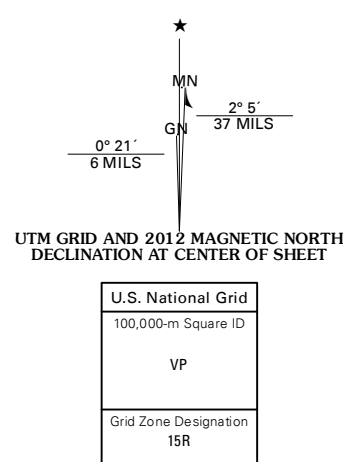


SHOATS CREEK QUADRANGLE  
LOUISIANA-Texas  
7.5-MINUTE SERIES



Produced by the United States Geological Survey  
North American Datum of 1983 (NAD83)  
World Geodetic System of 1984 (WGS84) Projection and  
1 000-meter grid; Universal Transverse Mercator, Zone 15R  
10 000-foot ticks; Louisiana Coordinate System of 1983  
(south zone), Texas Coordinate System of 1983 (central zone)

Imagery: N.A.I.P. May 2010  
Roads: ©2006-2011 TomTom  
Names: GNS, 2011  
Hydrography: National Hydrography Dataset, 2010  
Contours: National Elevation Dataset, 2008  
Boundaries: Census, IBWC, IBC, USGS, 1972 - 2010



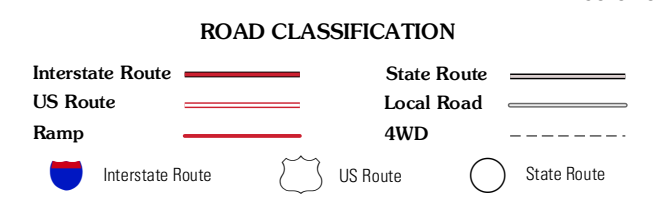
CONTOUR INTERVAL 5 FEET  
NORTH AMERICAN DATUM OF 1988

This map was produced to conform with the  
National Geospatial Program US Topo Product Standard, 2011.  
A metadata file associated with this product is draft version 0.6.1



QUADRANGLE LOCATION

Trout Creek	Bancroft	Fields
Sudduth Bluff	Shoats Creek	Clark Hollow
Harthorn	Starks	Lumla



SHOATS CREEK, LA-TX  
2012