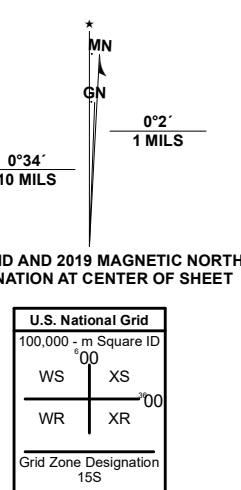


**Produced by the United States Geological Survey**

North American Datum of 1983 (NAD83)  
World Geodetic System of 1984 (WGS84), Projection and  
1 000-meter grid/Universal Transverse Mercator, Zone 15S  
This map is not a legal document. Boundaries may be  
generalized for this map scale. Private lands within government  
reservations may not be shown. Obtain permission before  
entering private lands.

Imagery.....NAIP, September 2019  
Roads.....U.S. Census Bureau, 2017  
Names.....GNIS, 1980-2000  
Hydrography.....National Hydrography Dataset, 2012  
Contours.....National Elevation Dataset, 2011  
Boundaries.....Multiple sources; see metadata file, 2018-2019  
Public Land Survey System.....BLM, 2019  
Wetlands.....FWS National Wetlands Inventory 1974-2010



ADJOINING QUADRANGLES

1	2	3
4	5	6
7	8	

1 Sterlington  
2 Collinston West  
3 Collinston East  
4 Monroe North  
5 Irwin Lake  
6 Monroe South  
7 Crew Lake  
8 Rayville



CONTOUR INTERVAL 5 FEET  
NORTH AMERICAN VERTICAL DATUM OF 1988  
This map was produced to conform with the  
National Geospatial Program US Topo Product Standard, 2011.  
A metadata file associated with this product is draft version 0.6.18

**SWARTZ, LA**  
2020

