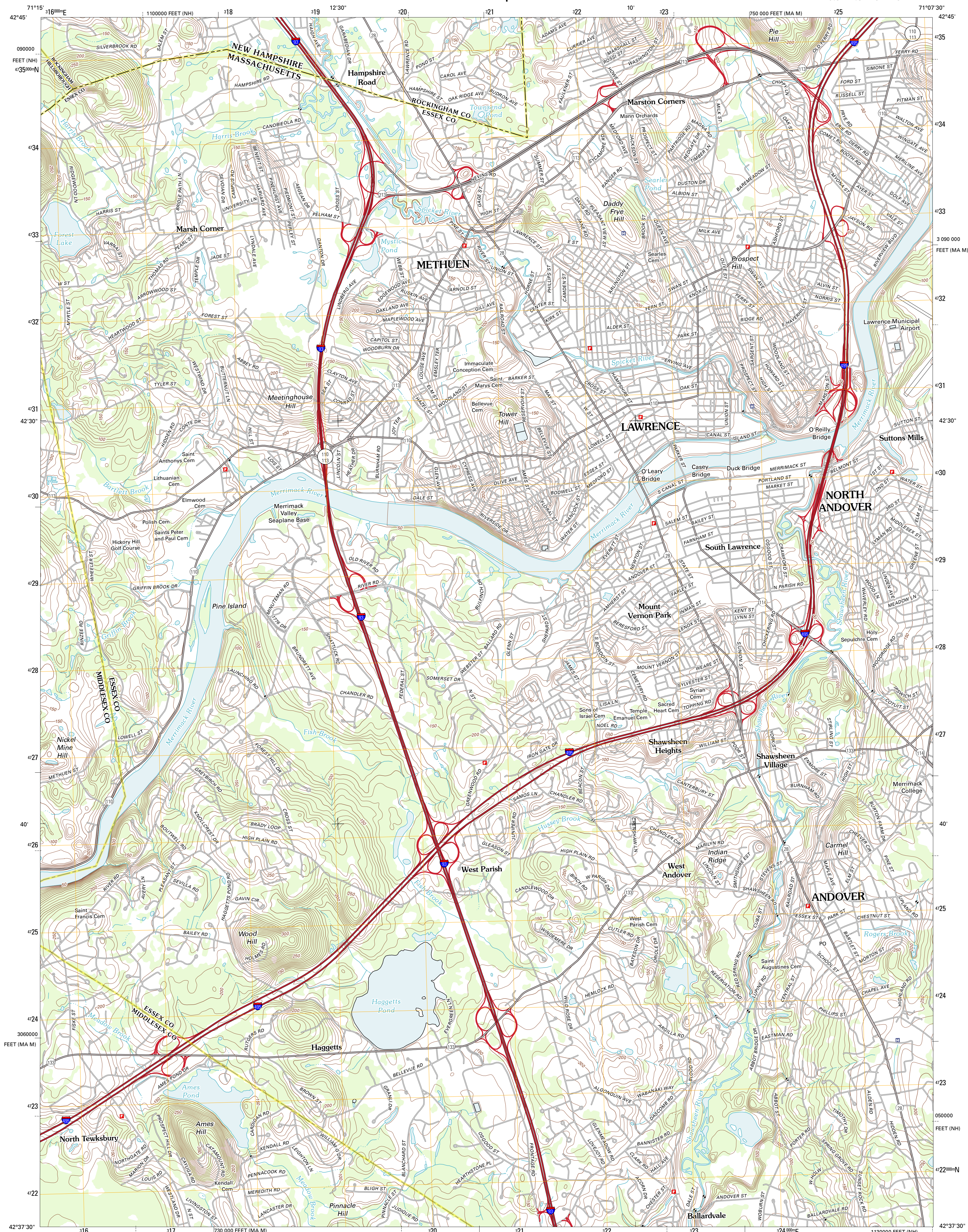




U.S. DEPARTMENT OF THE INTERIOR
U. S. GEOLOGICAL SURVEY

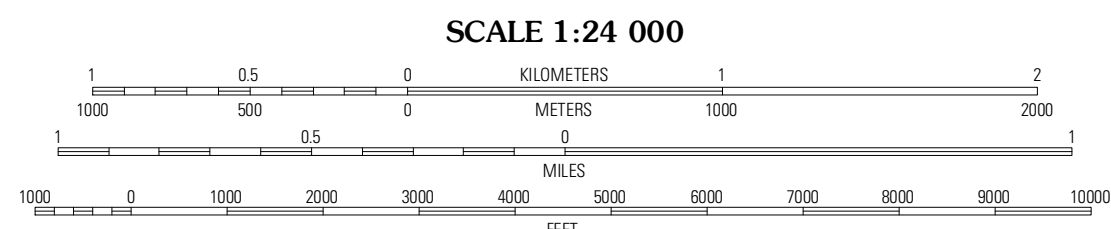
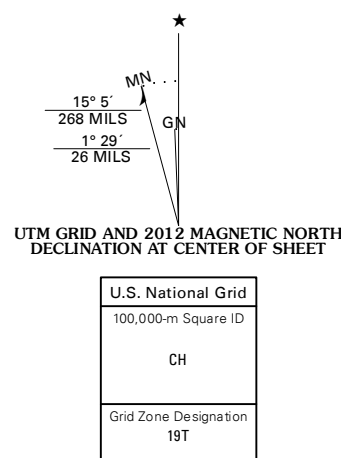


LAWRENCE QUADRANGLE
MASSACHUSETTS-NEW HAMPSHIRE
7.5-MINUTE SERIES



Produced by the United States Geological Survey
North American Datum of 1983 (NAD83)
World Geodetic System of 1984 (WGS84). Projection and
1 000-meter grid: Universal Transverse Mercator, Zone 19T
10 000-foot ticks: Massachusetts Coordinate System of 1983
(mainland zone), New Hampshire Coordinate System of 1983

Imagery.....NAIP, August 2010
Roads.....©2006-2011 TomTom
Names.....CNS, 2011
Hydrography.....National Hydrography Dataset, 2010
Contours.....National Elevation Dataset, 2012
Boundaries.....Census, IBWC, IBC, USGS, 1972-2010



CONTOUR INTERVAL 10 FEET
NORTH AMERICAN VERTICAL DATUM OF 1988
This map was produced to conform with the
National Geospatial Program US Topo Product Standard, 2011.
A metadata file associated with this product is draft version 0.6.2



ADJOINING 7.5' QUADRANGLES		
Wincham	Salem Depot	Haverhill
Lowell	Lawrence	South Groveland
Billerica	Wilmington	Reading

ROAD CLASSIFICATION	
Interstate Route	State Route
US Route	Local Road
Ramp	4WD

LAWRENCE, MA-NH
2012