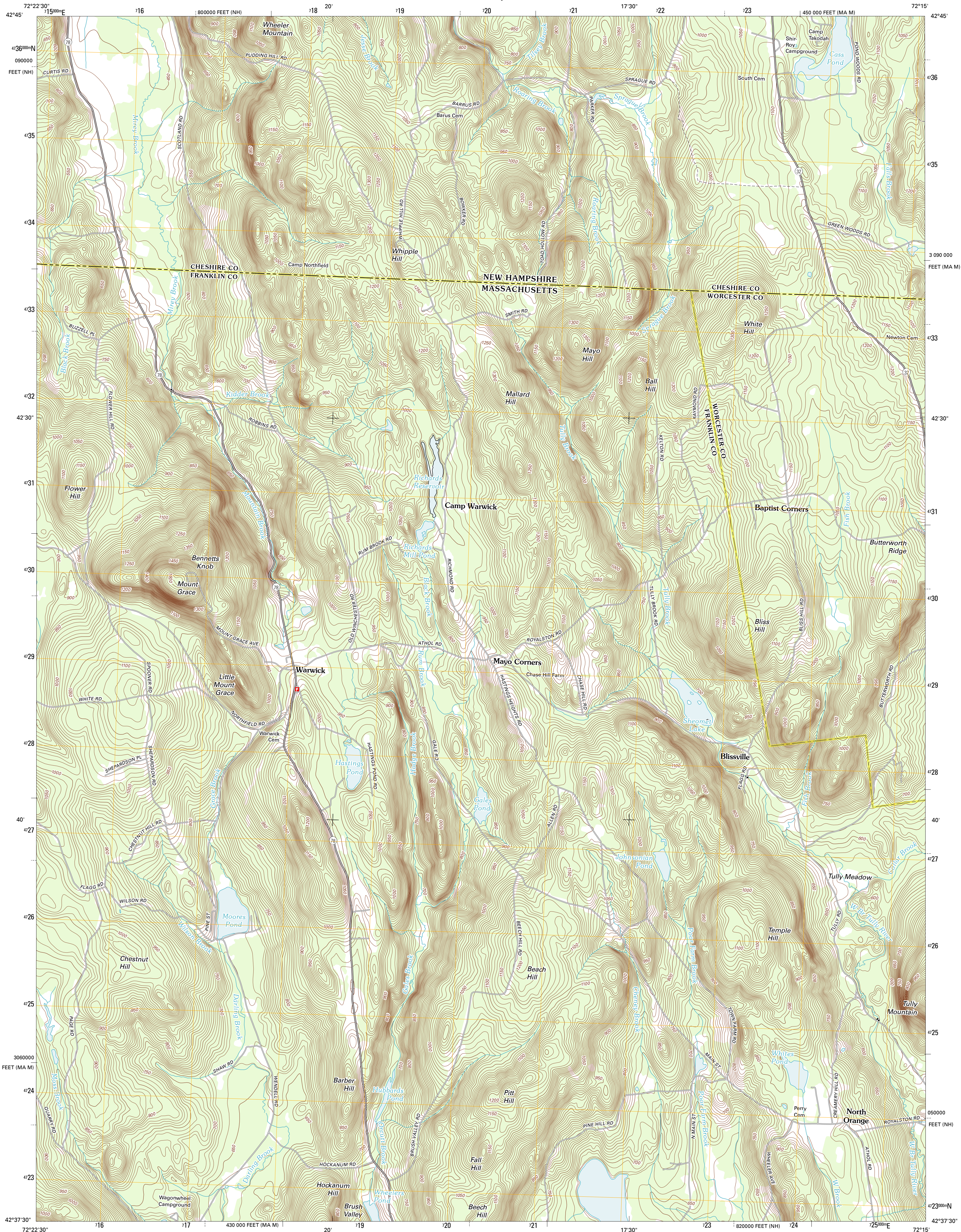




U.S. DEPARTMENT OF THE INTERIOR
U. S. GEOLOGICAL SURVEY

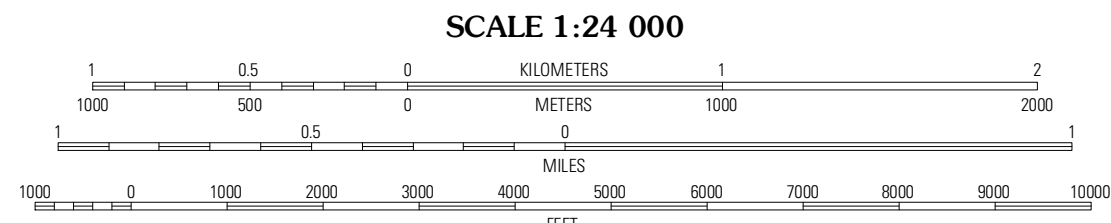
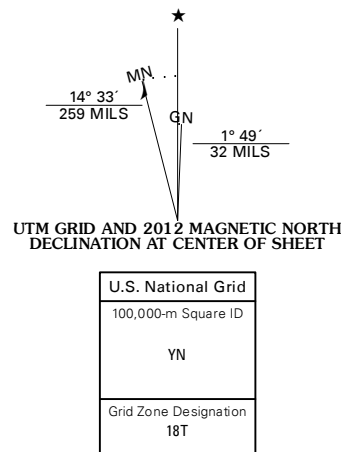


MOUNT GRACE QUADRANGLE
MASSACHUSETTS-NEW HAMPSHIRE
7.5-MINUTE SERIES



Produced by the United States Geological Survey
North American Datum of 1983 (NAD83)
World Geodetic System of 1984 (WGS84). Projection and
1 000-meter grid: Universal Transverse Mercator, Zone 18T
10 000-foot ticks: Massachusetts Coordinate System of 1983
(mainland zone), New Hampshire Coordinate System of 1983

Imagery.....NAIP, August 2010 - July 2011
Roads.....©2006-2011 TomTom
Names.....GNIS, 2011
Hydrography.....National Hydrography Dataset, 2010
Contours.....National Elevation Dataset, 2011
Boundaries.....Census, IBWC, IBC, USGS, 1972 - 2010



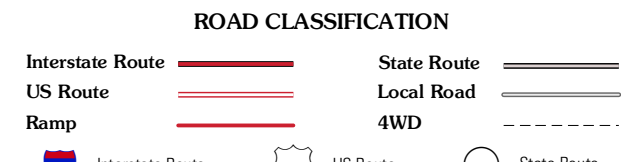
CONTOUR INTERVAL 10 FEET
NORTH AMERICAN VERTICAL DATUM OF 1988
This map was produced to conform with the
National Geospatial Program US Topo Product Standard, 2011.
A metadata file associated with this product is draft version 0.6.2



QUADRANGLE LOCATION

Hinsdale	West Swanzey	Troy
Northfield	Mount Grace	Royalston
Millers Falls	Orange	Athol

ADJOINING 7.5' QUADRANGLES



MOUNT GRACE, MA-NH
2012