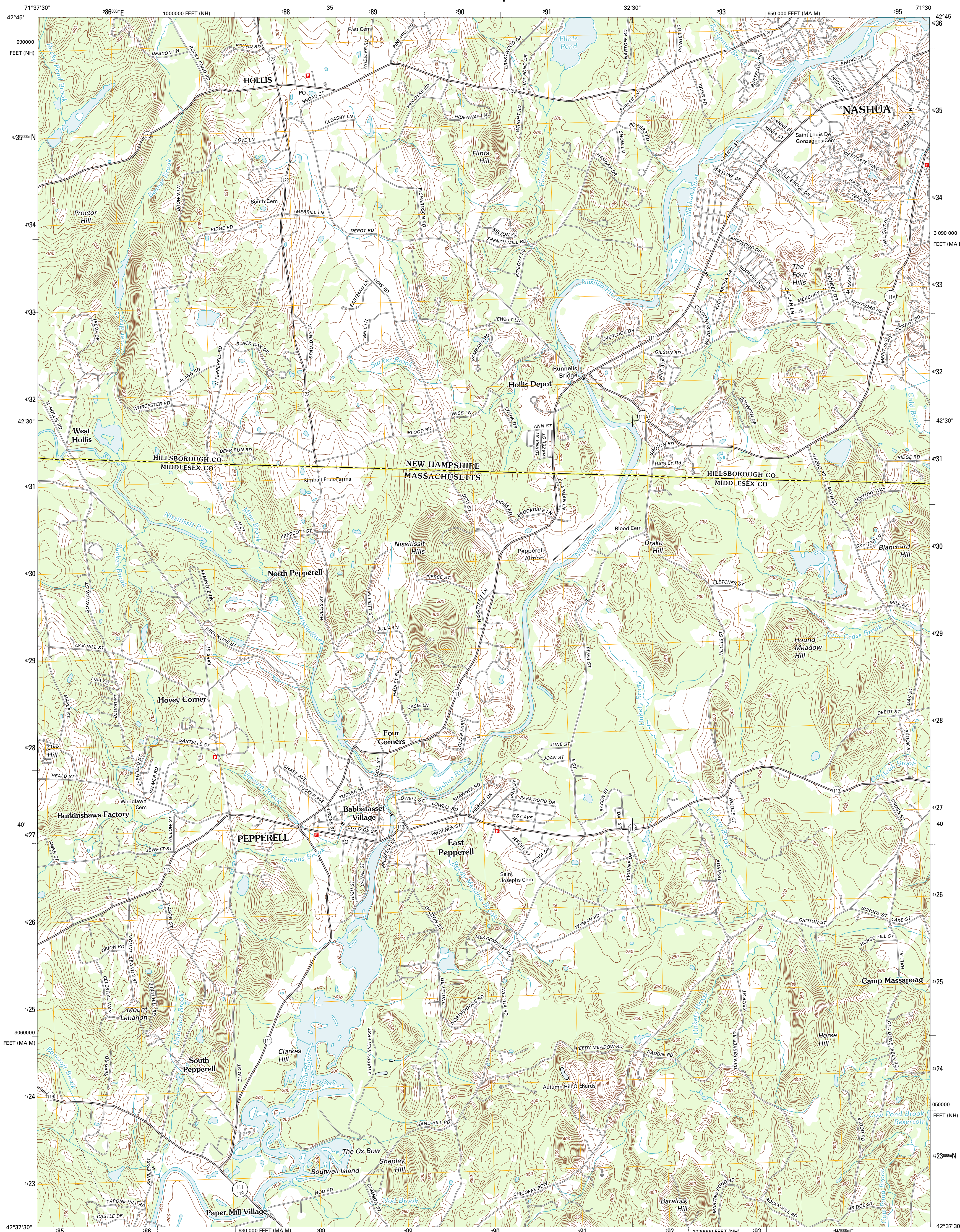




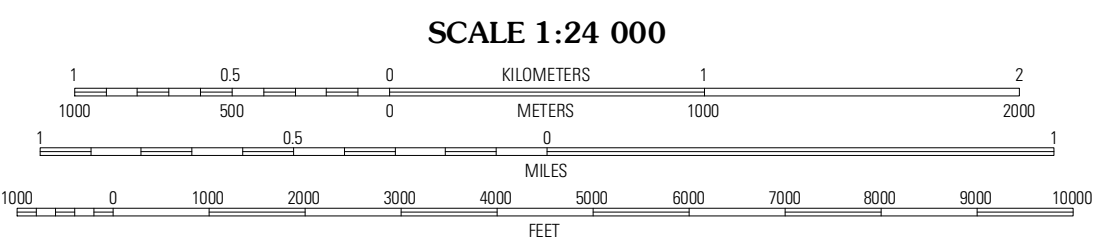
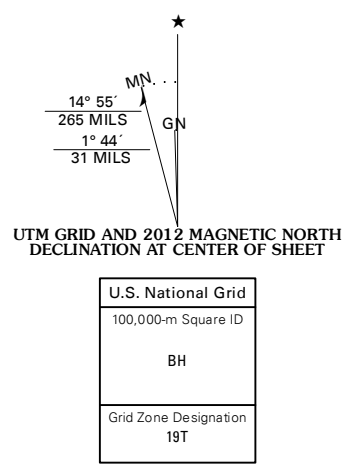
U.S. DEPARTMENT OF THE INTERIOR  
U. S. GEOLOGICAL SURVEY



PEPPERELL QUADRANGLE  
MASSACHUSETTS-NEW HAMPSHIRE  
7.5-MINUTE SERIES



Produced by the United States Geological Survey  
North American Datum of 1983 (NAD83)  
World Geodetic System of 1984 (WGS84). Projection and  
1 000-meter grid: Universal Transverse Mercator, Zone 19T  
10 000-foot ticks: Massachusetts Coordinate System of 1983  
(mainland zone), New Hampshire Coordinate System of 1983



**ROAD CLASSIFICATION**

Interstate Route	State Route
US Route	Local Road
Ramp	4WD

Legend for road symbols: Interstate Route (thick red line), US Route (red line with shield), Ramp (red line with arrow), State Route (thin red line), Local Road (thin black line), 4WD (dashed black line).

**QUADRANGLE LOCATION**

Milford	South Merrimack	Nashua North
Townsend	Pepperell	Nashua South
Shiley	Ayer	Westford

ADJOINING 7.5 QUADRANGLES

CONTOUR INTERVAL 10 FEET  
NORTH AMERICAN VERTICAL DATUM OF 1988

This map was produced to conform with the  
National Geospatial Program US Topo Product Standard, 2011.  
A metadata file associated with this product is draft version 0.6.2

PEPPERELL, MA-NH  
2012