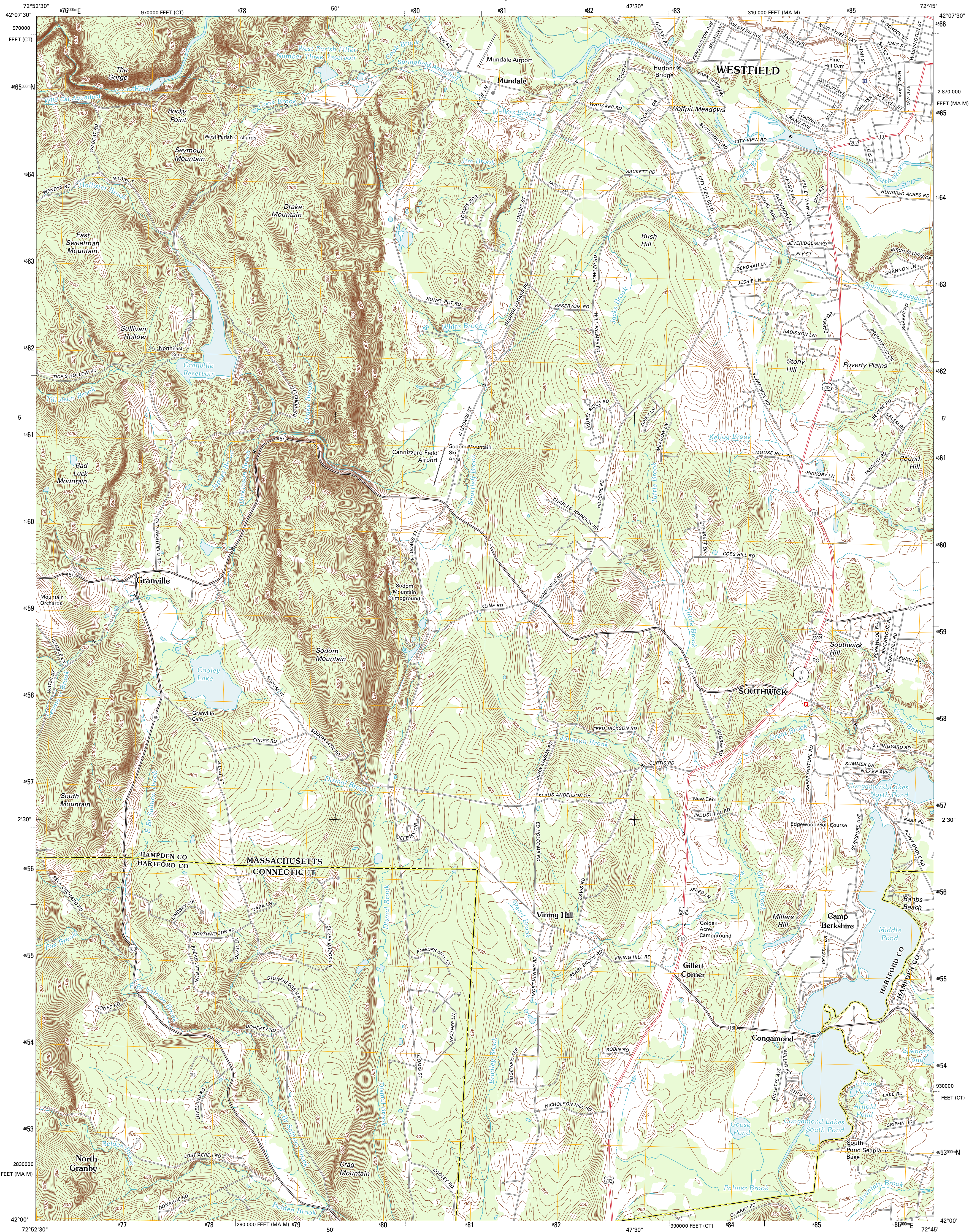




U.S. DEPARTMENT OF THE INTERIOR  
U. S. GEOLOGICAL SURVEY

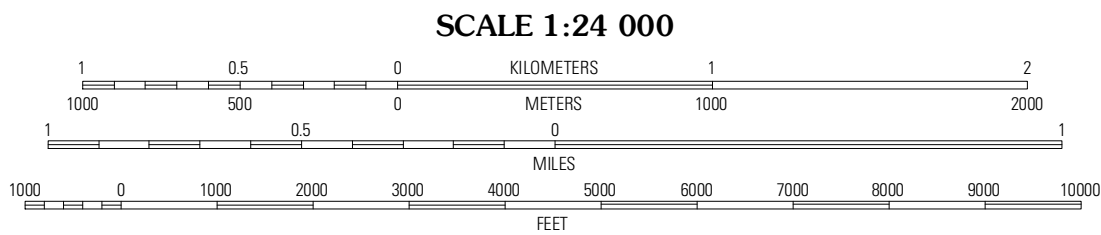
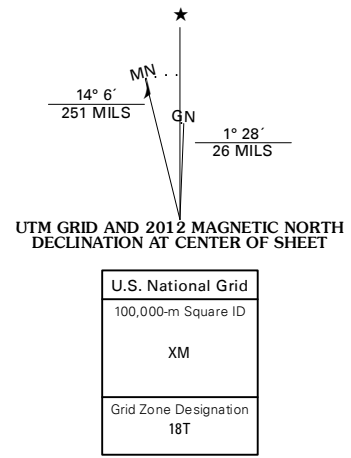


SOUTHWICK QUADRANGLE  
MASSACHUSETTS-CONNECTICUT  
7.5-MINUTE SERIES

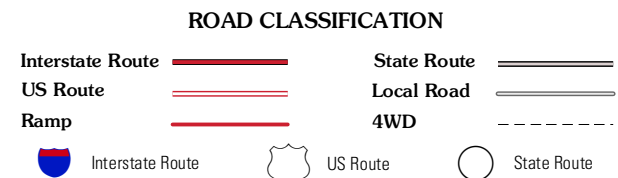


Produced by the United States Geological Survey  
North American Datum of 1983 (NAD83)  
World Geodetic System of 1984 (WGS84). Projection and  
1 000-meter grid: Universal Transverse Mercator, Zone 18T  
10 000-foot ticks: Massachusetts Coordinate System of 1983  
(mainland zone), Connecticut Coordinate System of 1983

Imagery.....NAIP, August 2010  
Roads.....©2006-2011 TomTom  
Names.....GNS, 2011  
Hydrography.....National Hydrography Dataset, 2010  
Contours.....National Elevation Dataset, 1998  
Boundaries.....Census, IBW, IBC, USGS, 1972 - 2010



CONTOUR INTERVAL 10 FEET  
NORTH AMERICAN VERTICAL DATUM OF 1988  
This map was produced to conform with the  
National Geospatial Program US Topo Product Standard, 2011.  
A metadata file associated with this product is draft version 0.6.2



| QUADRANGLE LOCATION |             |                  |
|---------------------|-------------|------------------|
| Blandford           | Worcester   | Mount Tom        |
| West Granville      | Southwick   | West Springfield |
| New Hartford        | Tariffville | Windor Locks     |

ADJOINING 7.5' QUADRANGLES

SOUTHWICK, MA-CT  
2012