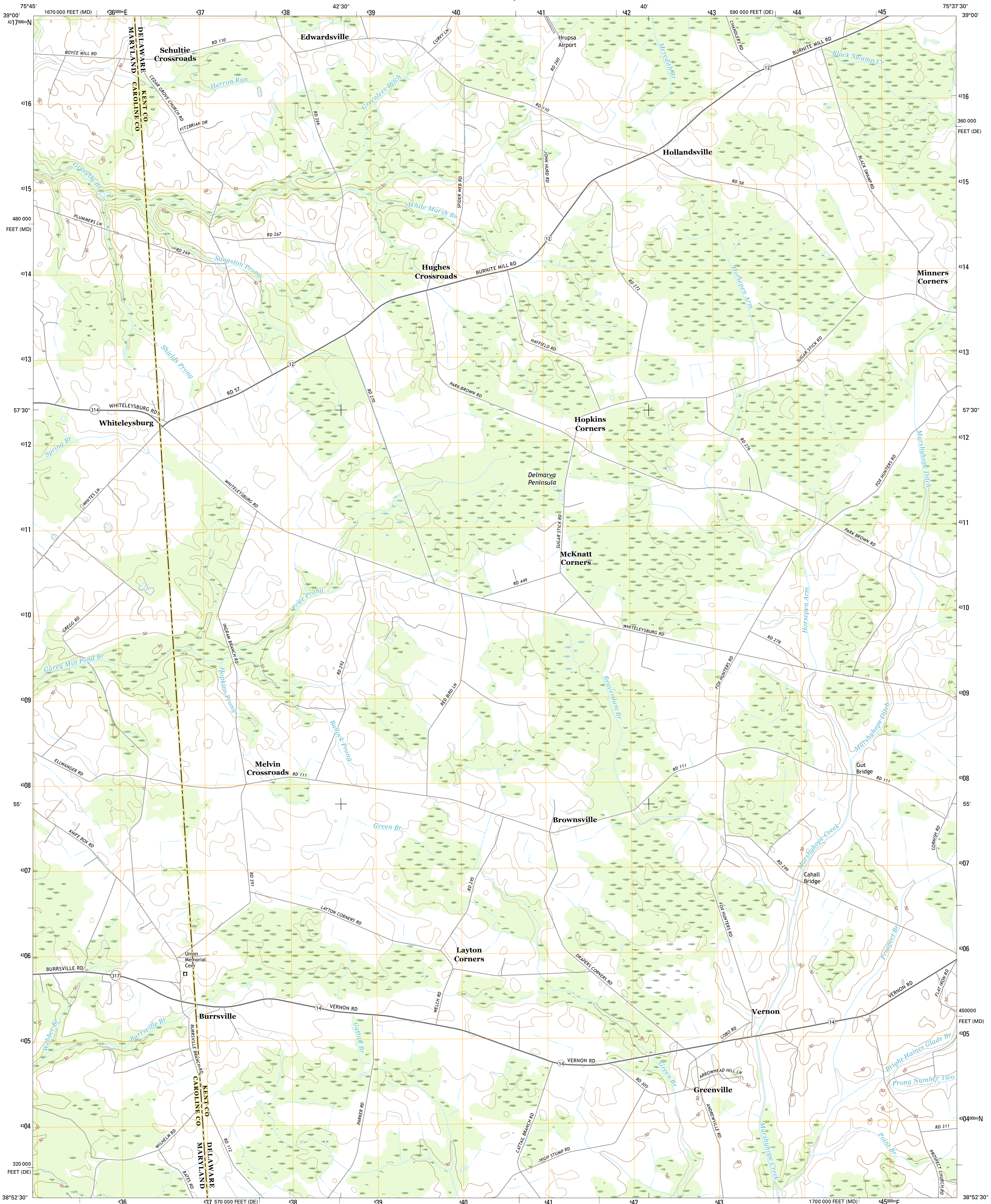




U.S. DEPARTMENT OF THE INTERIOR  
U.S. GEOLOGICAL SURVEY



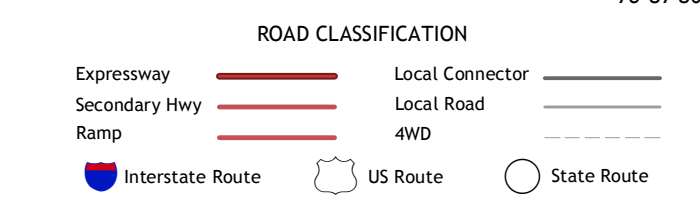
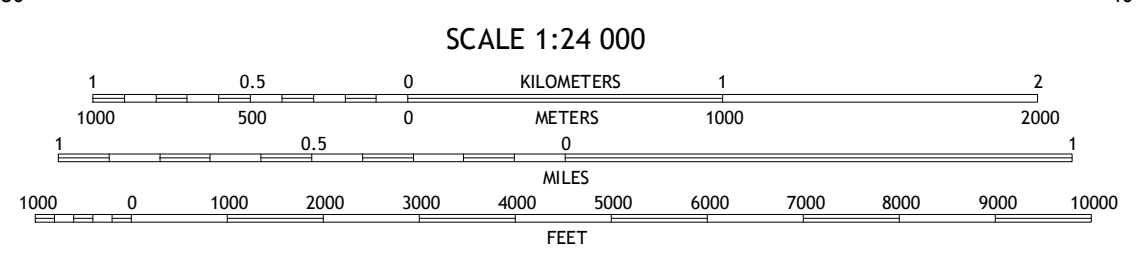
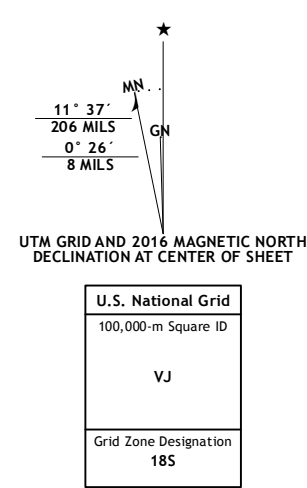
BURRSVILLE QUADRANGLE  
MARYLAND-DELAWARE  
7.5-MINUTE SERIES



Produced by the United States Geological Survey  
North American Datum of 1983 (NAD83)  
World Geodetic System of 1984 (WGS84). Projection and  
1 000-meter grid: Universal Transverse Mercator, Zone 18S  
10 000-foot ticks: Delaware Coordinate System of 1983,  
Maryland Coordinate System of 1983

This map is not a legal document. Boundaries may be  
generalized for this map scale. Private lands within government  
reservations may not be shown. Obtain permission before  
entering private lands.

Imagery:.....NAIP, September 2015  
Roads:.....U.S. Census Bureau, 2015 - 2016  
Names:.....GNIS, 2016  
Hydrography:.....National Hydrography Dataset, 2015  
Contours:.....National Elevation Dataset, 2013  
Boundaries:.....Multiple sources; see metadata file 1972 - 2016  
Wetlands:.....FWS National Wetlands Inventory 1977 - 2014



1	2	3
4	5	6
7	8	

1 Goldsboro  
2 Maryland  
3 Wyoming  
4 Denton  
5 Harrington  
6 Hobbs  
7 Hickman  
8 Greenwood

CONTOUR INTERVAL 5 FEET  
NORTH AMERICAN VERTICAL DATUM OF 1988

This map was produced to conform with the  
National Geospatial Program US Topo Product Standard, 2011.  
A metadata file associated with this product is draft version 0.6.19

BURRSVILLE, MD-DE  
2016

