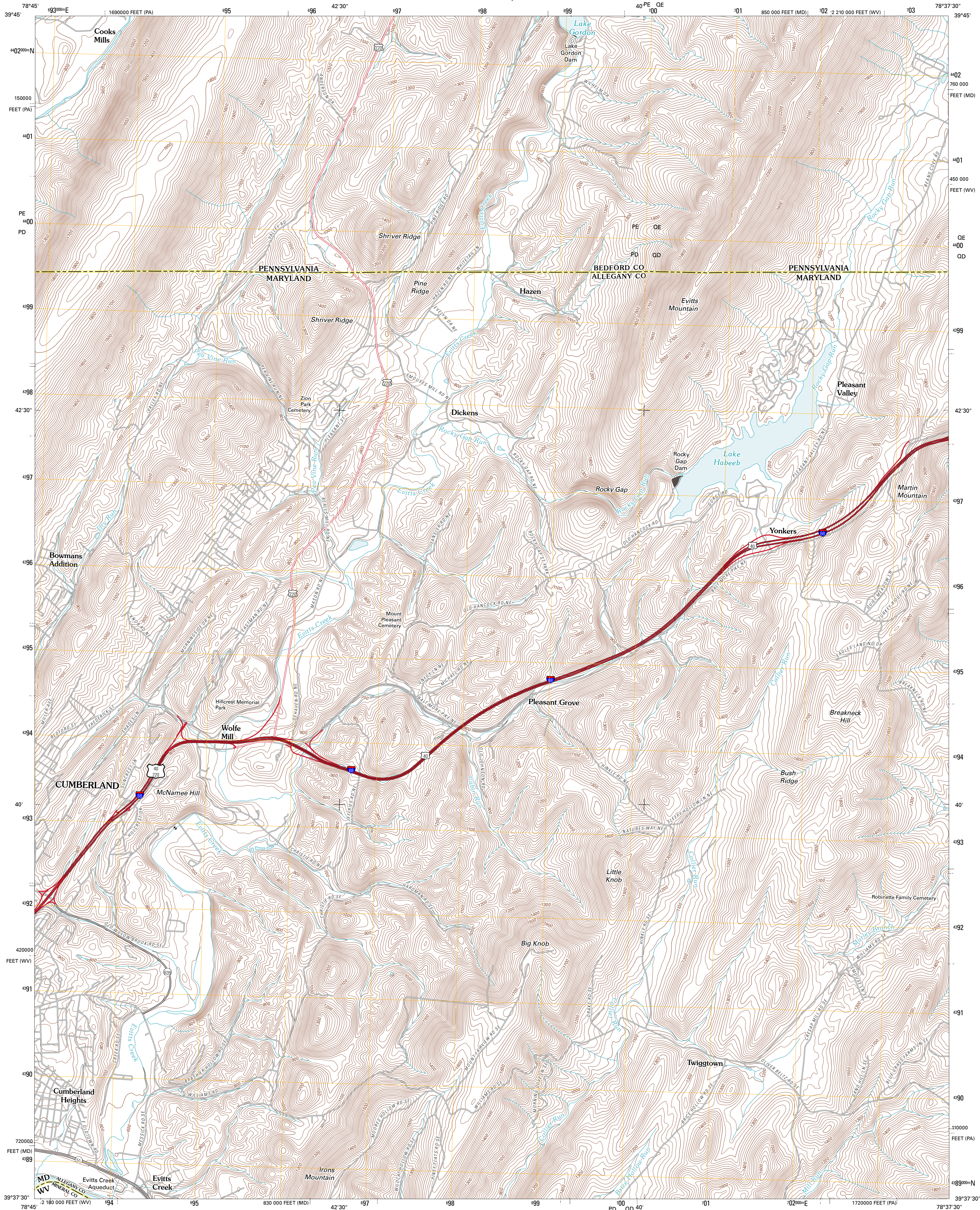




U.S. DEPARTMENT OF THE INTERIOR
U. S. GEOLOGICAL SURVEY

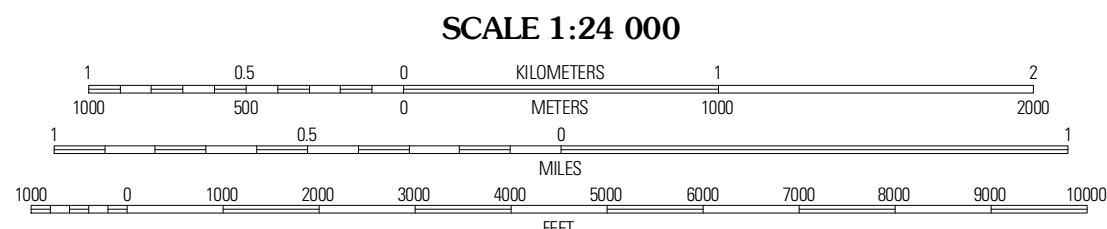
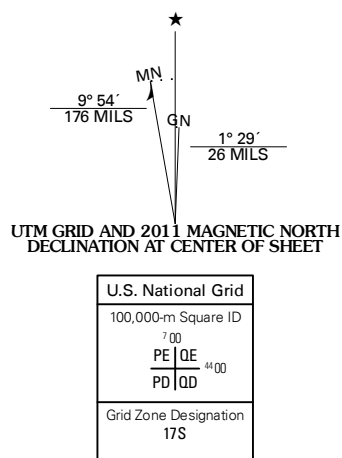


EVITTS CREEK QUADRANGLE
MARYLAND-PENNSYLVANIA-WEST VIRGINIA
7.5-MINUTE SERIES



Produced by the United States Geological Survey
North American Datum of 1983 (NAD83)
World Geodetic System of 1984 (WGS84). Projection and
1 000-meter grid: Universal Transverse Mercator, Zone 17S
10 000-foot ticks: Maryland Coordinate System of 1983,
Pennsylvania Coordinate System of 1983 (south zone), West
Virginia Coordinate System of 1983 (north zone)

Imagery.....NAIP, July 2009 - October 2009
Roads.....©2006-2010 Tele Atlas
Names.....GNIS, 2010
Hydrography.....National Hydrography Dataset, 2009
Contours.....National Elevation Dataset, 2000
Boundaries.....Census, IBWC, BIC, USGS, 1972 - 2010



CONTOUR INTERVAL 20 FEET
NORTH AMERICAN VERTICAL DATUM OF 1988
This map was produced to conform with version 0.5.10
of the USGS US Topo Product Standard.
A metadata file associated with this product is draft version 0.5.15



QUADRANGLE LOCATION		
Fairhope	Hyndman	Beans Cove
Cumberland	Evitts Creek	Flintstone
Cresaptown	Patterson Creek	Oldtown

ROAD CLASSIFICATION
Interstate Route
US Route
Ramp
State Route
Local Road
4WD

EVITTS CREEK, MD-PA-WV
2011

ADJOINING 7.5' QUADRANGLES