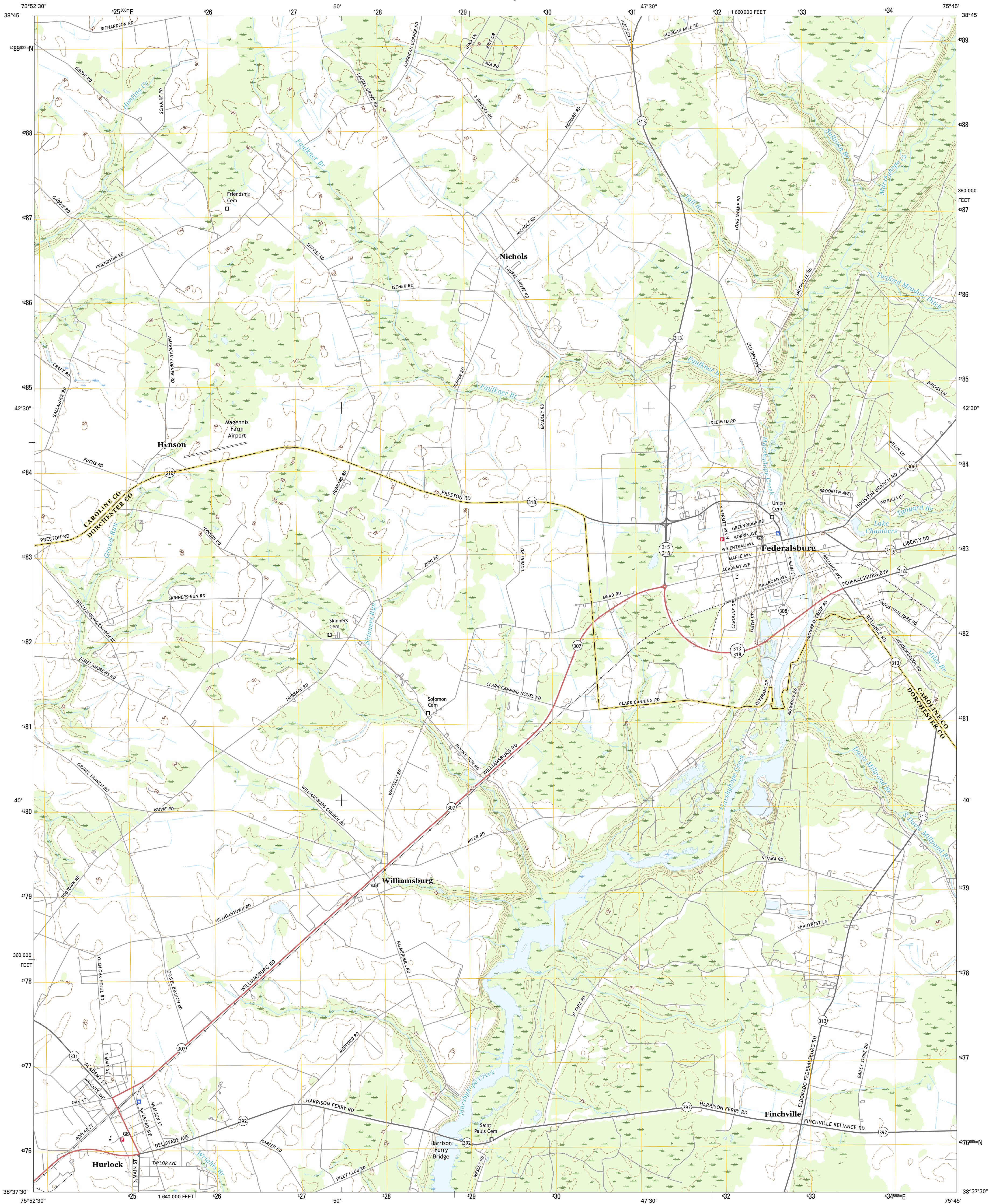




U.S. DEPARTMENT OF THE INTERIOR  
U.S. GEOLOGICAL SURVEY



FEDERALSBURG QUADRANGLE  
MARYLAND  
7.5-MINUTE SERIES



Produced by the United States Geological Survey  
North American Datum of 1983 (NAD83)  
World Geodetic System of 1984 (WGS84). Projection and  
1 000-meter grid: Universal Transverse Mercator, Zone 18S  
10 000-foot ticks: Maryland Coordinate System of 1983

This map is not a legal document. Boundaries may be  
generalized for this map scale. Private lands within government  
reservations may not be shown. Obtain permission before  
entering private lands.

Imagery.....NAIP, September 2015  
Roads.....U.S. Census Bureau, 2015 - 2016  
Names.....GNIS, 2016  
Hydrography.....National Hydrography Dataset, 2015  
Contours.....National Elevation Dataset, 1999  
Boundaries.....Multiple sources; see metadata file 1972 - 2016  
Wetlands.....FWS National Wetlands Inventory 1977 - 2014

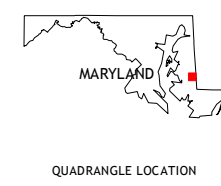
UTM GRID AND 2016 MAGNETIC NORTH  
DECLINATION AT CENTER OF SHEET

U.S. National Grid  
100,000-m Square ID  
VH  
Grid Zone Designation  
18S

SCALE 1:24 000  
1 000 0 500 0 500 1000 2000  
KILOMETERS  
1 000 0 1000 2000 3000 4000 5000 6000 7000 8000 9000 10000  
METERS  
1 000 0 1000 2000 3000 4000 5000 6000 7000 8000 9000 10000  
MILES  
FEET

CONTOUR INTERVAL 5 FEET  
NORTH AMERICAN VERTICAL DATUM OF 1988

This map was produced to conform with the  
National Geospatial Program US Topo Product Standard, 2011.  
A metadata file associated with this product is draft version 0.6.19



QUADRANGLE LOCATION

1 Fawling Creek  
2 Hobbs  
3 Hickman  
4 Preston  
5 Seaford West  
6 East New Market  
7 Rhodesdale  
8 Sharptown

ROAD CLASSIFICATION  
Expressway  
Secondary Hwy  
Ramp  
Interstate Route  
Local Connector  
Local Road  
4WD  
US Route  
State Route

FEDERALSBURG, MD  
2016



USGS X 2 4 K 1 5 1 3  
NGA REF NO.