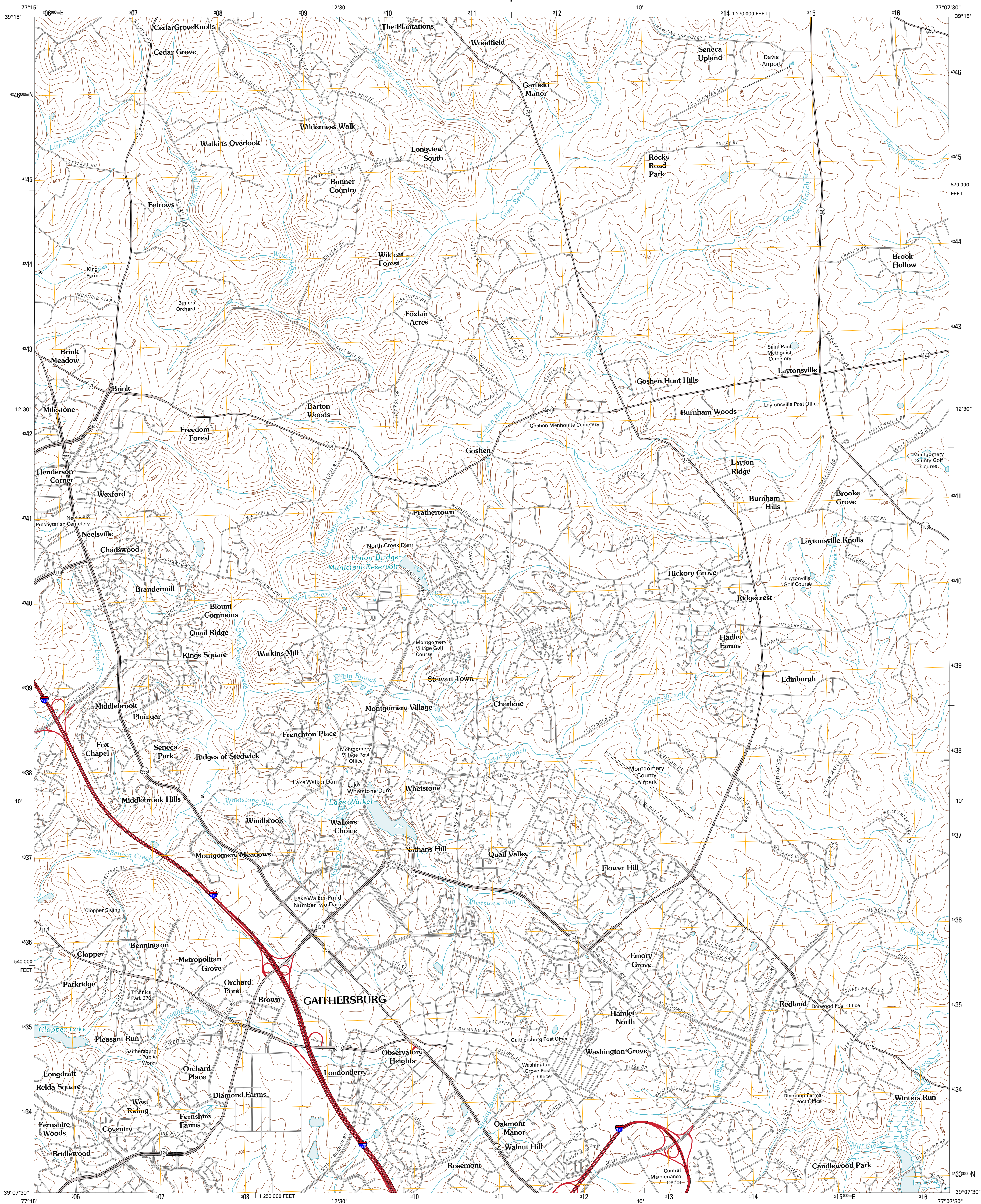




U.S. DEPARTMENT OF THE INTERIOR  
U. S. GEOLOGICAL SURVEY

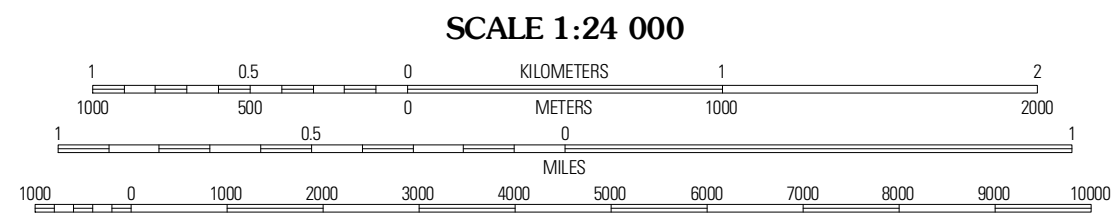
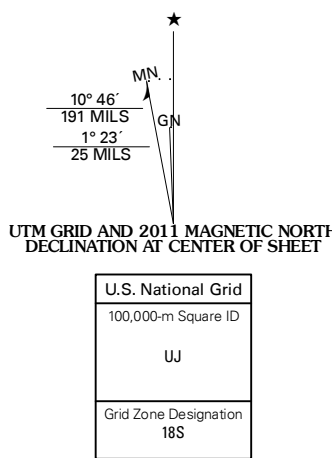


GAITHERSBURG QUADRANGLE  
MARYLAND-MONTGOMERY CO.  
7.5-MINUTE SERIES



Produced by the United States Geological Survey  
North American Datum of 1983 (NAD83)  
World Geodetic System of 1984 (WGS84). Projection and  
1 000-meter grid: Universal Transverse Mercator, Zone 18S  
10 000-foot ticks: Maryland Coordinate System of 1983

Imagery.....NAIP, June 2009 - August 2009  
Roads.....©2006-2010 Tele Atlas  
Names.....National Hydrography Dataset, 2009  
Contours.....National Elevation Dataset, 2007  
Boundaries.....Census, IBWC, IBC, USGS, 1972 - 2010



Urban	Damascus	Woodbine
Germantown	Gaithersburg	Sandy Spring
Seneca	Rockville	Kensington

ADJOINING 7.5 QUADRANGLES

GAITHERSBURG, MD  
2011