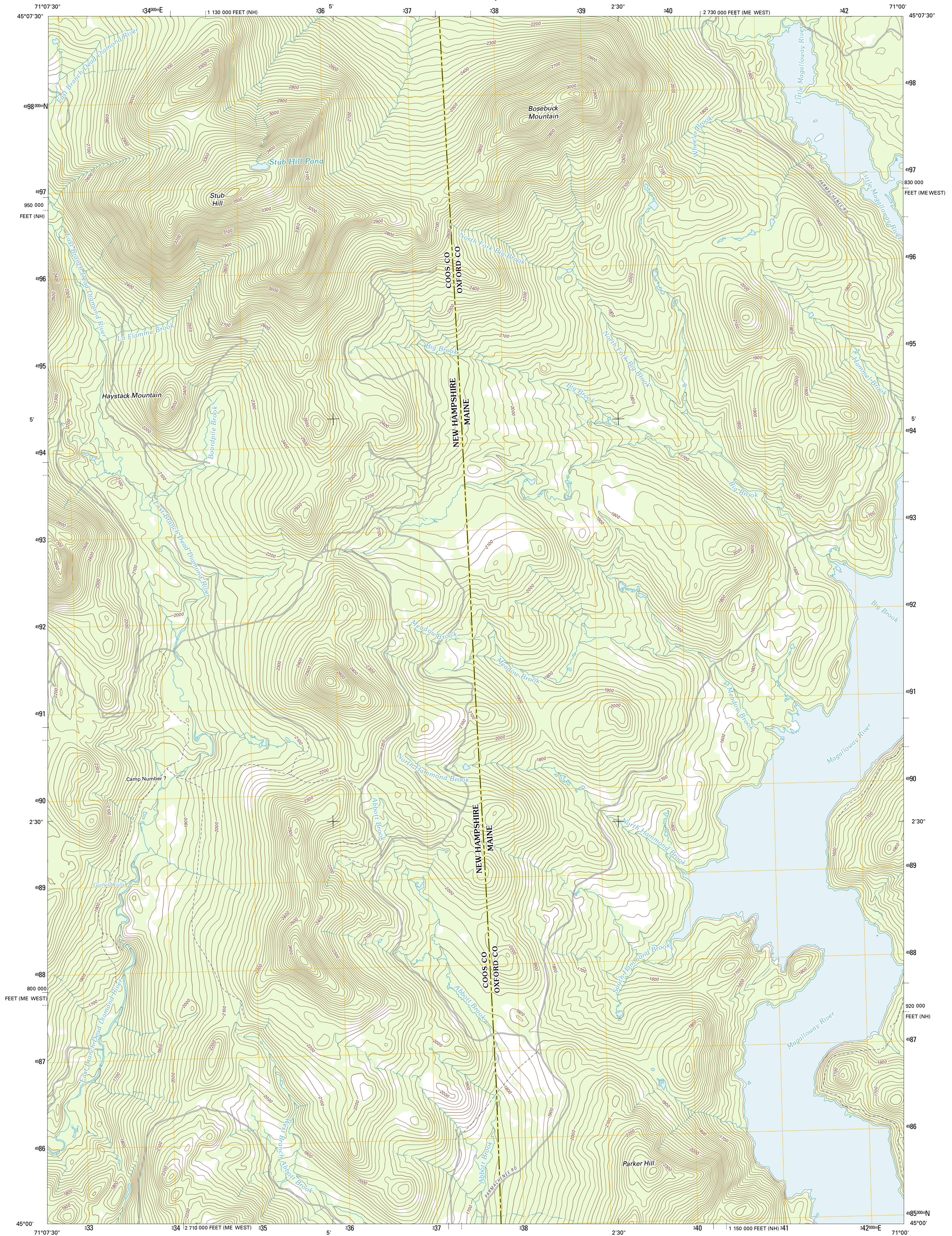




U.S. DEPARTMENT OF THE INTERIOR  
U. S. GEOLOGICAL SURVEY

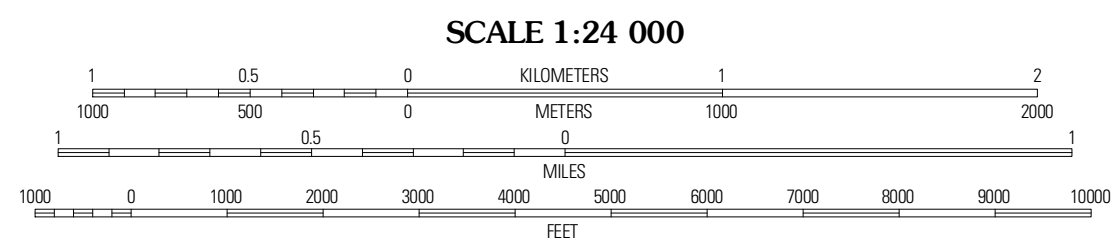
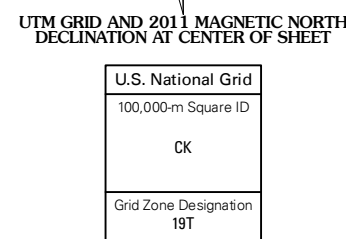


BOSEBUCK MOUNTAIN QUADRANGLE  
MAINE-NEW HAMPSHIRE  
7.5-MINUTE SERIES

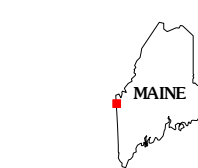


Produced by the United States Geological Survey  
North American Datum of 1983 (NAD83)  
World Geodetic System of 1984 (WGS84). Projection and  
1 000-meter grid: Universal Transverse Mercator, Zone 19T  
10 000-foot ticks: Maine Coordinate System of 1983 (west  
zone), New Hampshire Coordinate System of 1983

Imagery.....NAIP, July 2009 - September 2009  
Roads.....©2006-2011 TomTom  
Names.....©2011  
Hydrography.....National Hydrography Dataset, 2009  
Contours.....National Elevation Dataset, 2008  
Boundaries.....Census, IBWC, IBC, USGS, 1972 - 2010



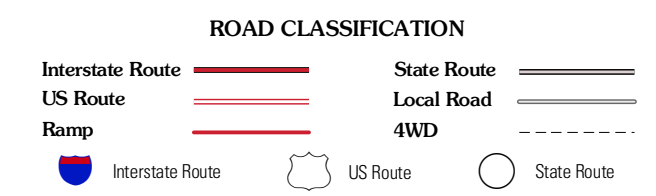
SCALE 1:24 000  
CONTOUR INTERVAL 20 FEET  
NORTH AMERICAN VERTICAL DATUM OF 1988  
This map was produced to conform with the  
National Geospatial Program US Topo Product Standard, 2011.  
A metadata file associated with this product is draft version 0.6.0



QUADRANGLE LOCATION

Second Connecticut Lake	Ramp Mountain	Farmhouse Lake
Magalloway Mountain	Bosebuck Mountain	Lincoln Pond
Mount Pisgah	Wilson's Mills	Richardson Pond

ADJOINING 7.5 QUADRANGLES



BOSEBUCK MOUNTAIN, ME-NH  
2011