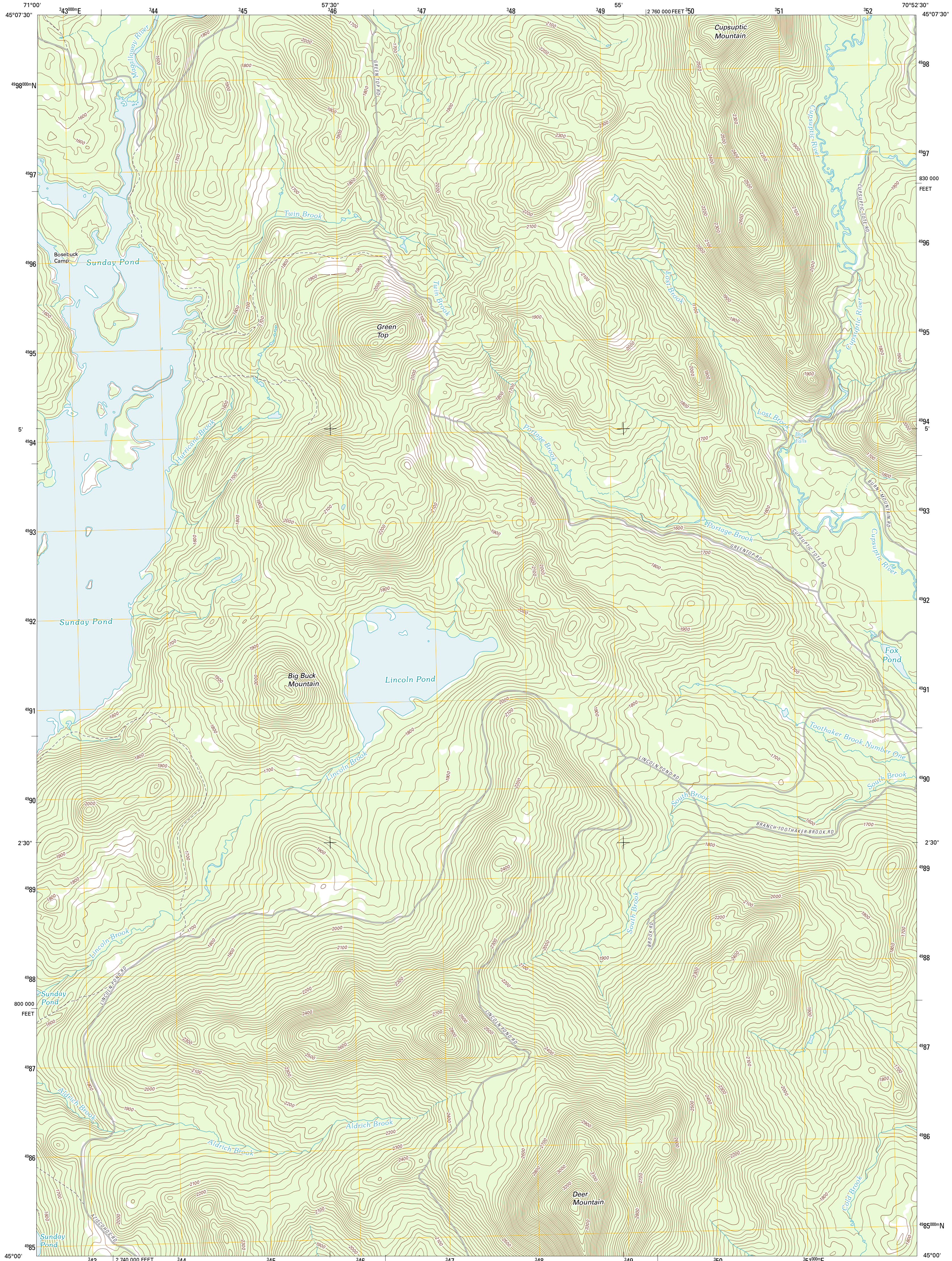




U.S. DEPARTMENT OF THE INTERIOR  
U. S. GEOLOGICAL SURVEY

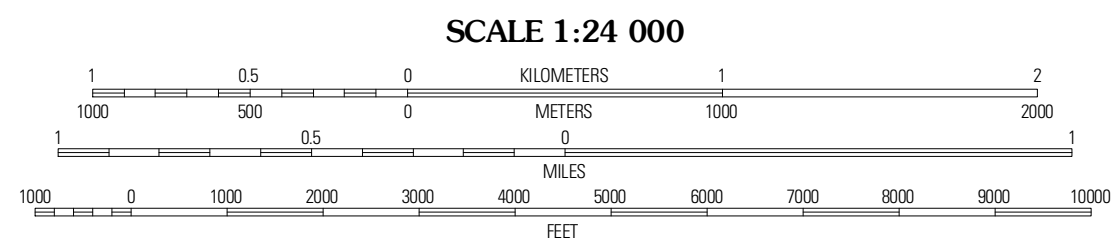
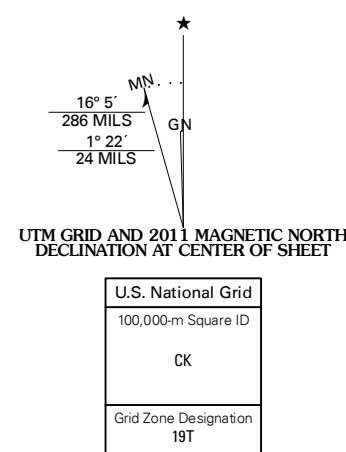


LINCOLN POND QUADRANGLE  
MAINE-OXFORD CO.  
7.5-MINUTE SERIES

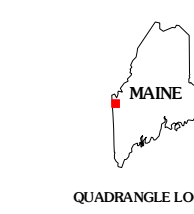


Produced by the United States Geological Survey  
North American Datum of 1983 (NAD83)  
World Geodetic System of 1984 (WGS84). Projection and  
1 000-meter grid: Universal Transverse Mercator, Zone 19T  
10 000-foot ticks: Maine Coordinate System of 1983 (west  
zone)

Imagery.....N.A.I.P., July 2009  
Roads.....©2006-2011 TomTom  
Names.....GNIS, 2011  
Hydrography.....National Hydrography Dataset, 2009  
Contours.....National Elevation Dataset, 2008  
Boundaries.....Census, IBWC, IBC, USGS, 1972 - 2010



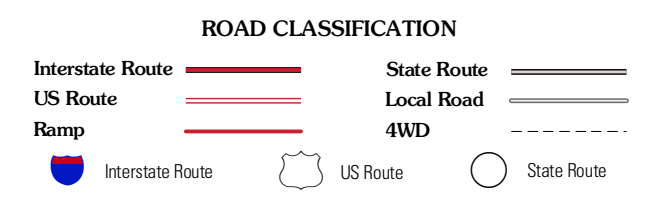
This map was produced to conform with the  
National Geospatial Program US Topo Product Standard, 2011.  
A metadata file associated with this product is draft version 0.6.0



QUADRANGLE LOCATION

Ramp Mountain	Parmachenee Lake	Little Kennebec Lake
Boseback Mountain	Lincoln Pond	Kennebecago
Wilsons Mills	Richardson Pond	Oxapissoc

ADJOINING 7.5 QUADRANGLES



LINCOLN POND, ME  
2011