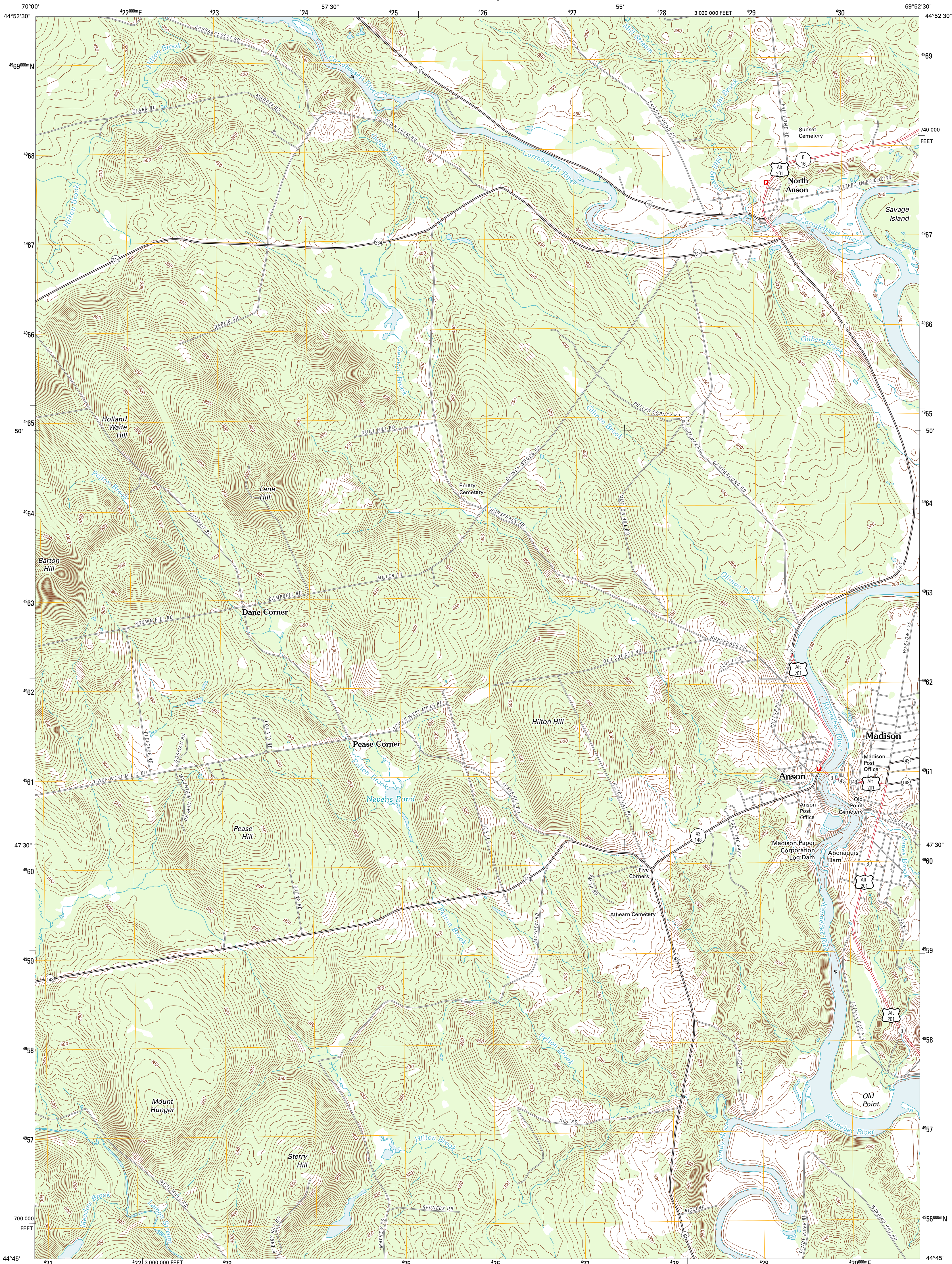




U.S. DEPARTMENT OF THE INTERIOR  
U. S. GEOLOGICAL SURVEY

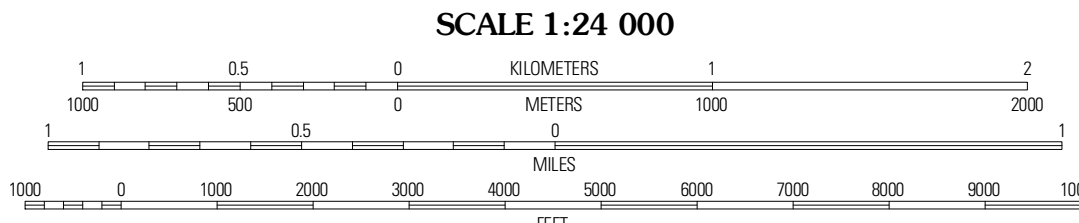
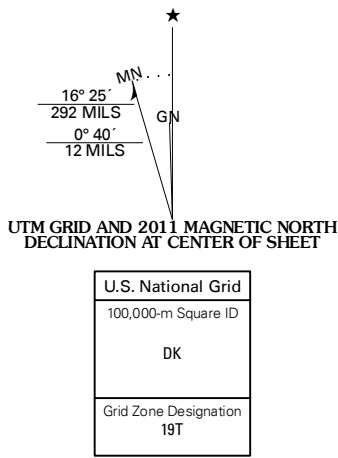


MADISON WEST QUADRANGLE  
MAINE-SOMERSET CO.  
7.5-MINUTE SERIES

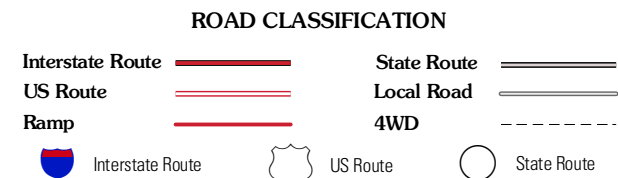
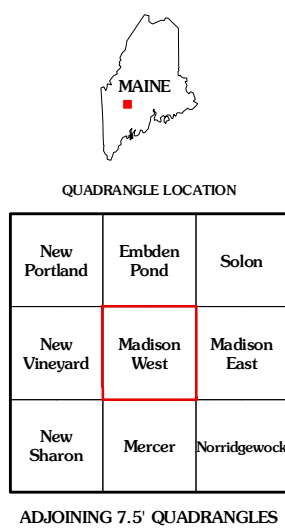


Produced by the United States Geological Survey  
North American Datum of 1983 (NAD83)  
World Geodetic System of 1984 (WGS84). Projection and  
1 000-meter grid: Universal Transverse Mercator, Zone 19T  
10 000-foot ticks: Maine Coordinate System of 1983 (west  
zone)

Imagery.....NAIP, August 2009  
Roads.....©2006-2011 Tomlin  
Names.....GNIS, 2011  
Hydrography.....National Hydrography Dataset, 2009  
Contours.....National Elevation Dataset, 2004  
Boundaries.....Census, IBWC, IBC, USGS, 1972 - 2010



CONTOUR INTERVAL 10 FEET  
NORTH AMERICAN VERTICAL DATUM OF 1988  
This map was produced to conform with the  
National Geospatial Program US Topo Product Standard, 2011.  
A metadata file associated with this product is draft version 0.6.0



MADISON WEST, ME  
2011