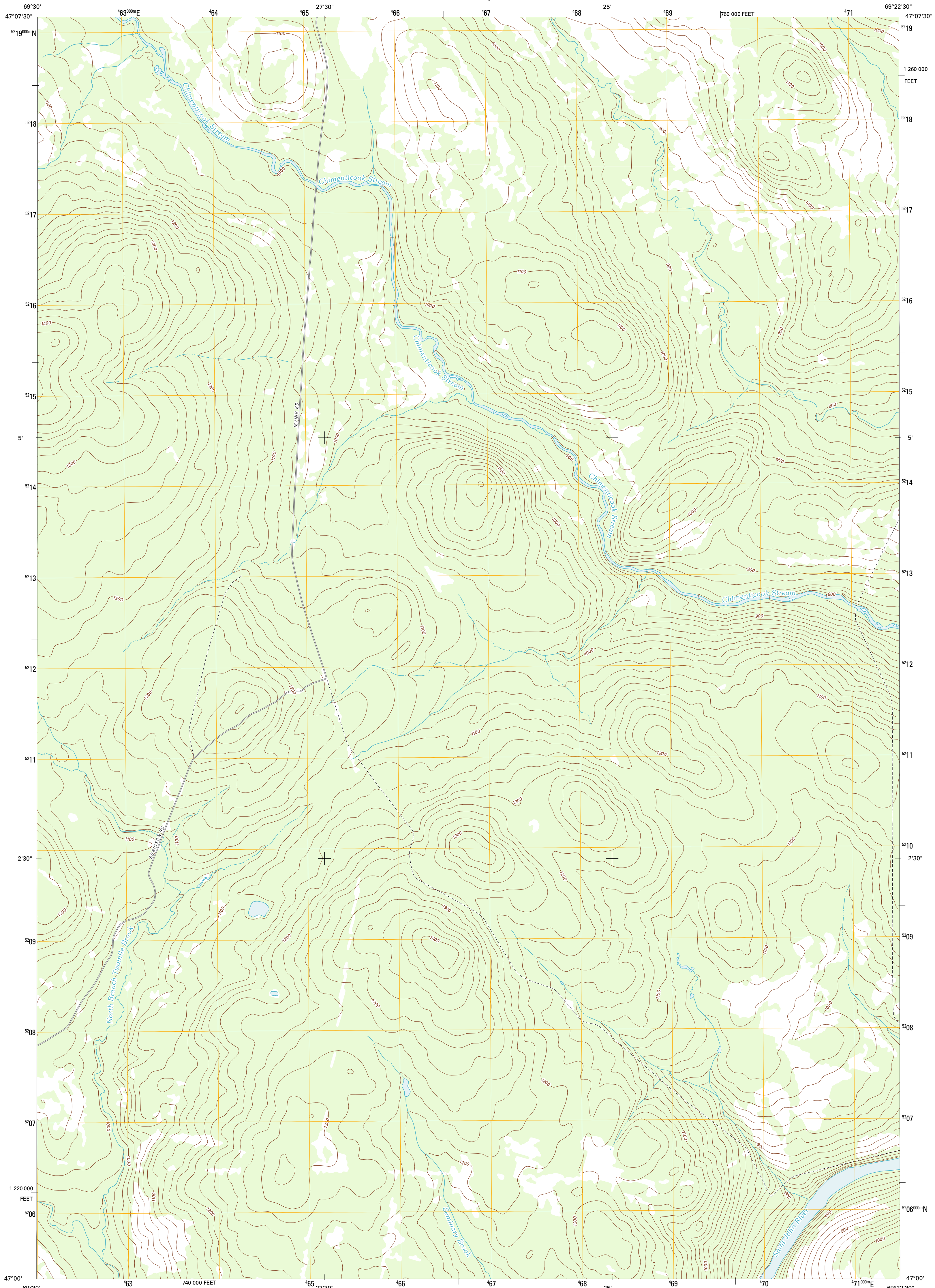




U.S. DEPARTMENT OF THE INTERIOR
U. S. GEOLOGICAL SURVEY

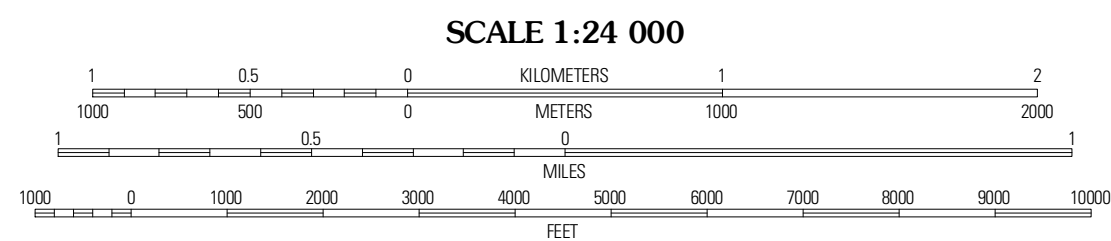
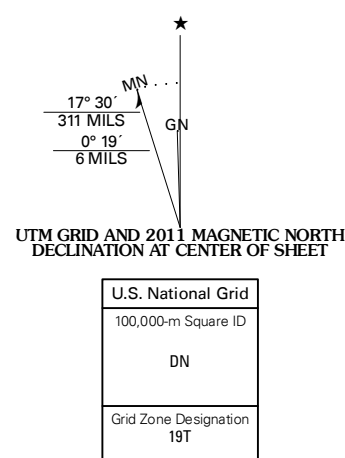


ROCKY MOUNTAIN SW QUADRANGLE
MAINE-AROOSTOOK CO.
7.5-MINUTE SERIES



Produced by the United States Geological Survey
North American Datum of 1983 (NAD83)
World Geodetic System of 1984 (WGS84). Projection and
1 000-meter grid: Universal Transverse Mercator, Zone 19T
10 000-foot ticks: Maine Coordinate System of 1983 (east
zone)

Imagery.....NAP, August 2009 - September 2009
Roads.....©2006-2011 TomTom
Names.....GNIS, 2011
Hydrography.....National Hydrography Dataset, 2009
Contours.....National Elevation Dataset, 2008
Boundaries.....Census, IBWC, IBC, USGS, 1972 - 2010



CONTOUR INTERVAL 20 FEET
NORTH AMERICAN VERTICAL DATUM OF 1988

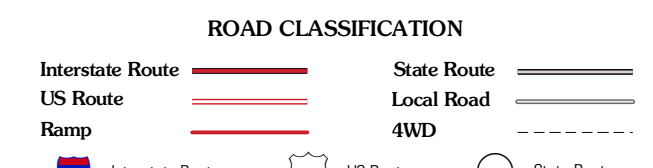
This map was produced to conform with the
National Geospatial Program US Topo Product Standard, 2011.
A metadata file associated with this product is draft version 0.6.0



QUADRANGLE LOCATION

East Lake	Rocky Mountain NW	Rocky Mountain
East Lake SE	Rocky Mountain SW	Schoolhouse Rapids
Ninemile Deadwater	Big Black Rapids	McKinnon Brook

ADJOINING 7.5 QUADRANGLES



ROCKY MOUNTAIN SW, ME
2011