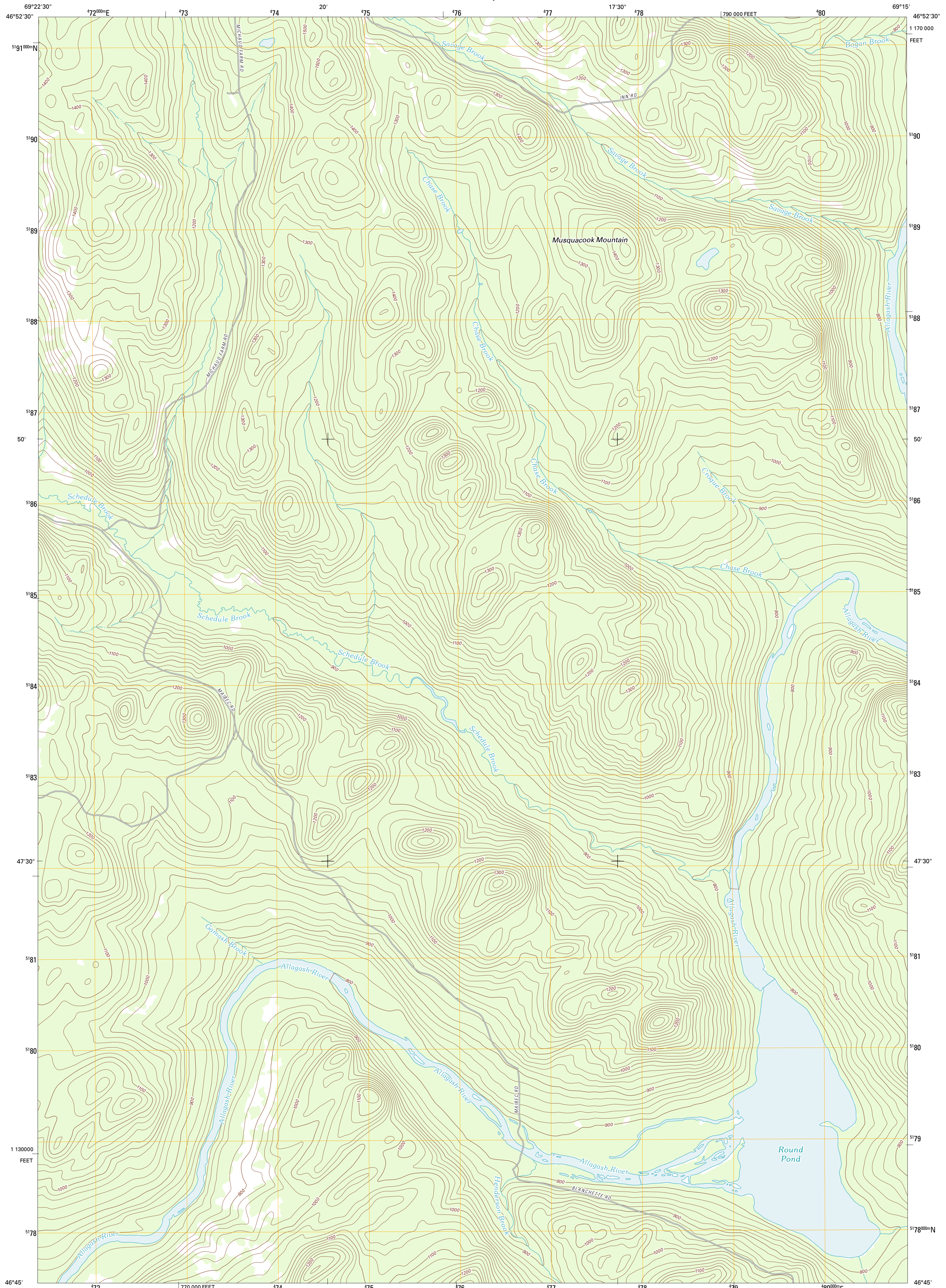




U.S. DEPARTMENT OF THE INTERIOR
U. S. GEOLOGICAL SURVEY

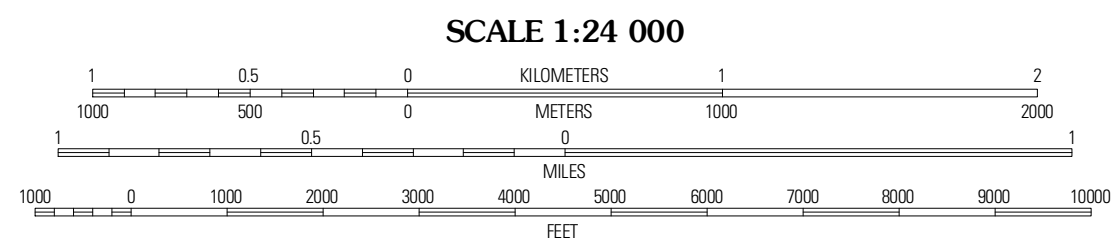
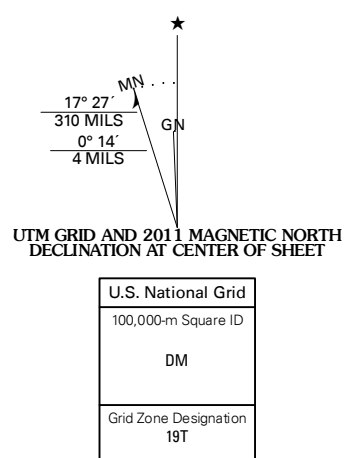


ROUND POND QUADRANGLE
MAINE-AROOSTOOK CO.
7.5-MINUTE SERIES

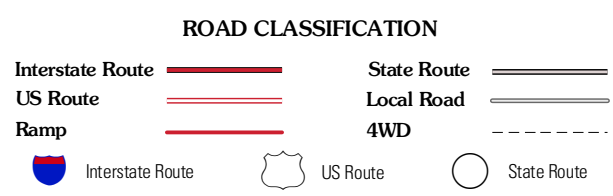
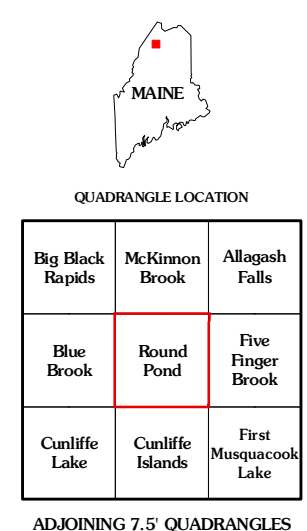


Produced by the United States Geological Survey
North American Datum of 1983 (NAD83)
World Geodetic System of 1984 (WGS84). Projection and
1 000-meter grid: Universal Transverse Mercator, Zone 19T
10 000-foot ticks: Maine Coordinate System of 1983 (east
zone)

Imagery:.....NAIP, July 2009
Roads:.....©2006-2011 TomTom
Names:.....GNIS, 2011
Hydrography:.....National Elevation Dataset, 2009
Contours:.....National Elevation Dataset, 2008
Boundaries:.....Census, IBWC, IBC, USGS, 1972 - 2010



CONTOUR INTERVAL 20 FEET
NORTH AMERICAN VERTICAL DATUM OF 1988
This map was produced to conform with the
National Geospatial Program US Topo Product Standard, 2011.
A metadata file associated with this product is draft version 0.6.0



ROUND POND, ME
2011