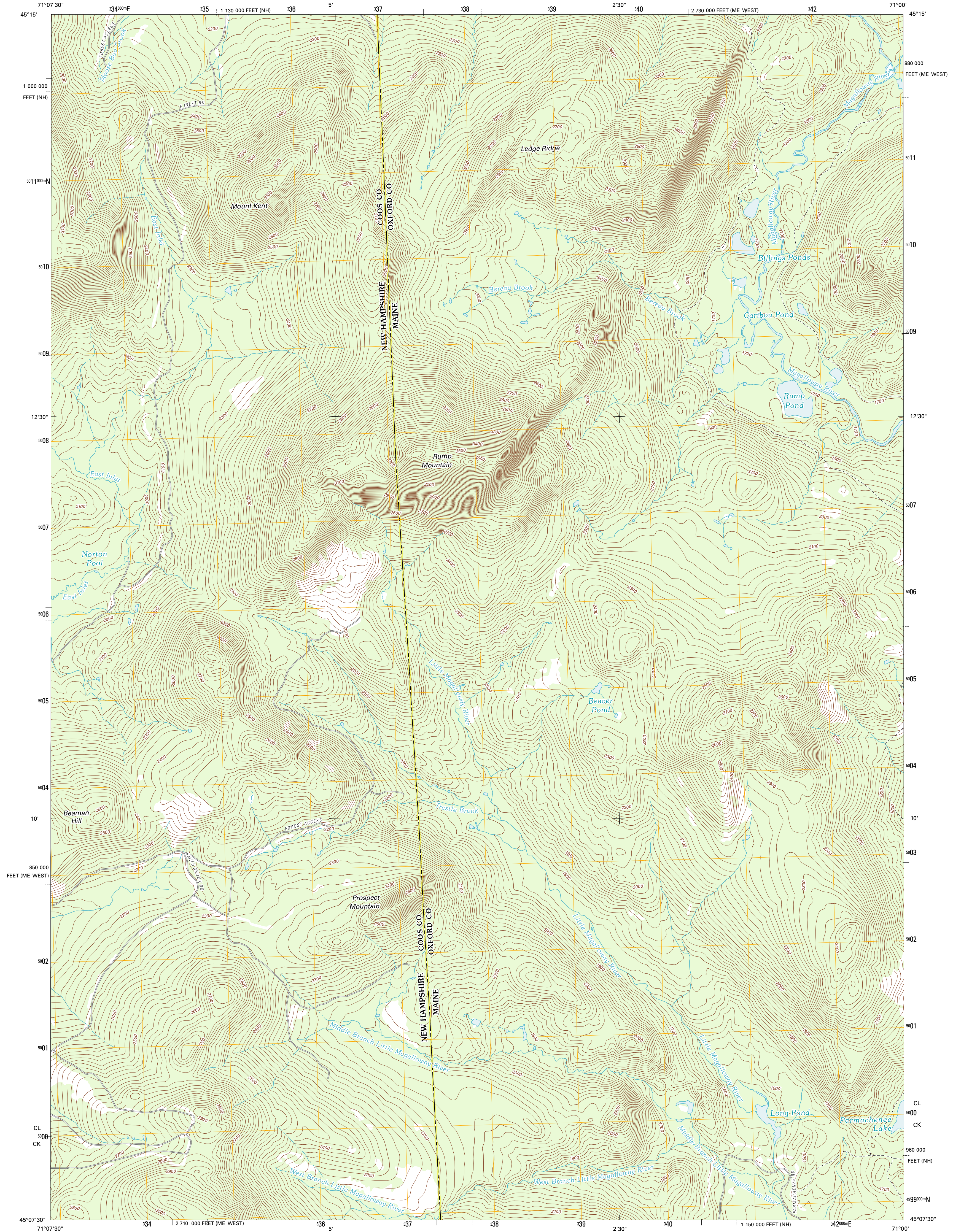




U.S. DEPARTMENT OF THE INTERIOR
U. S. GEOLOGICAL SURVEY

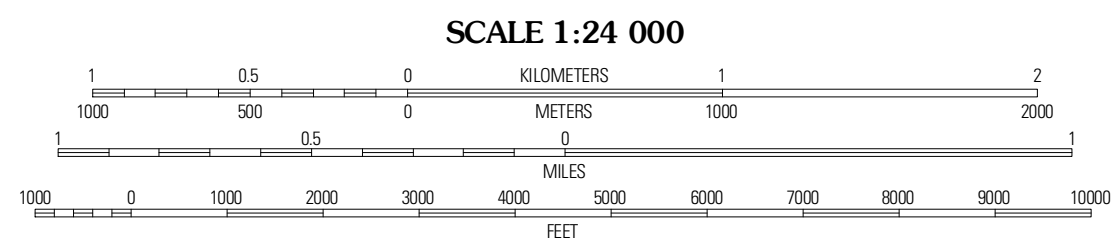
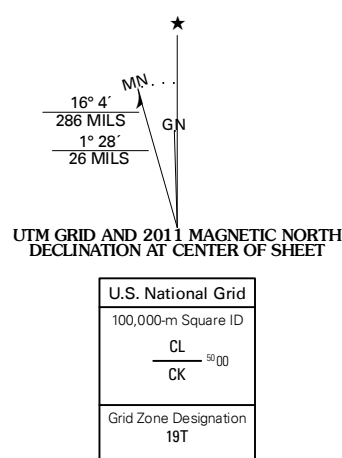


RUMP MOUNTAIN QUADRANGLE
MAINE-NEW HAMPSHIRE
7.5-MINUTE SERIES



Produced by the United States Geological Survey
North American Datum of 1983 (NAD83)
World Geodetic System of 1984 (WGS84). Projection and
1 000-meter grid: Universal Transverse Mercator, Zone 19T
10 000-foot ticks: Maine Coordinate System of 1983 (west
zone), New Hampshire Coordinate System of 1983

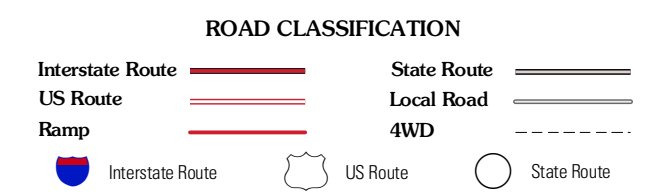
Imagery.....NAP, September 2009
Roads.....©2006-2011 TomTom
Names.....GNS, 2011
Hydrography.....National Hydrography Dataset, 2009
Contours.....National Elevation Dataset, 2008
Boundaries.....Census, IBWC, IBC, USGS, 1972 - 2010



QUADRANGLE LOCATION

Prospect Hill	Moose Bog	Twin Peaks
Second Connecticut Lake	Rump Mountain	Parmachenee Lake
Magalloway Mountain	Boseback Mountain	Lincoln Pond

ADJOINING 7.5 QUADRANGLES



CONTOUR INTERVAL 20 FEET
NORTH AMERICAN VERTICAL DATUM OF 1988

This map was produced to conform with the
National Geospatial Program US Topo Product Standard, 2011.
A metadata file associated with this product is draft version 0.6.0

RUMP MOUNTAIN, ME-NH
2011