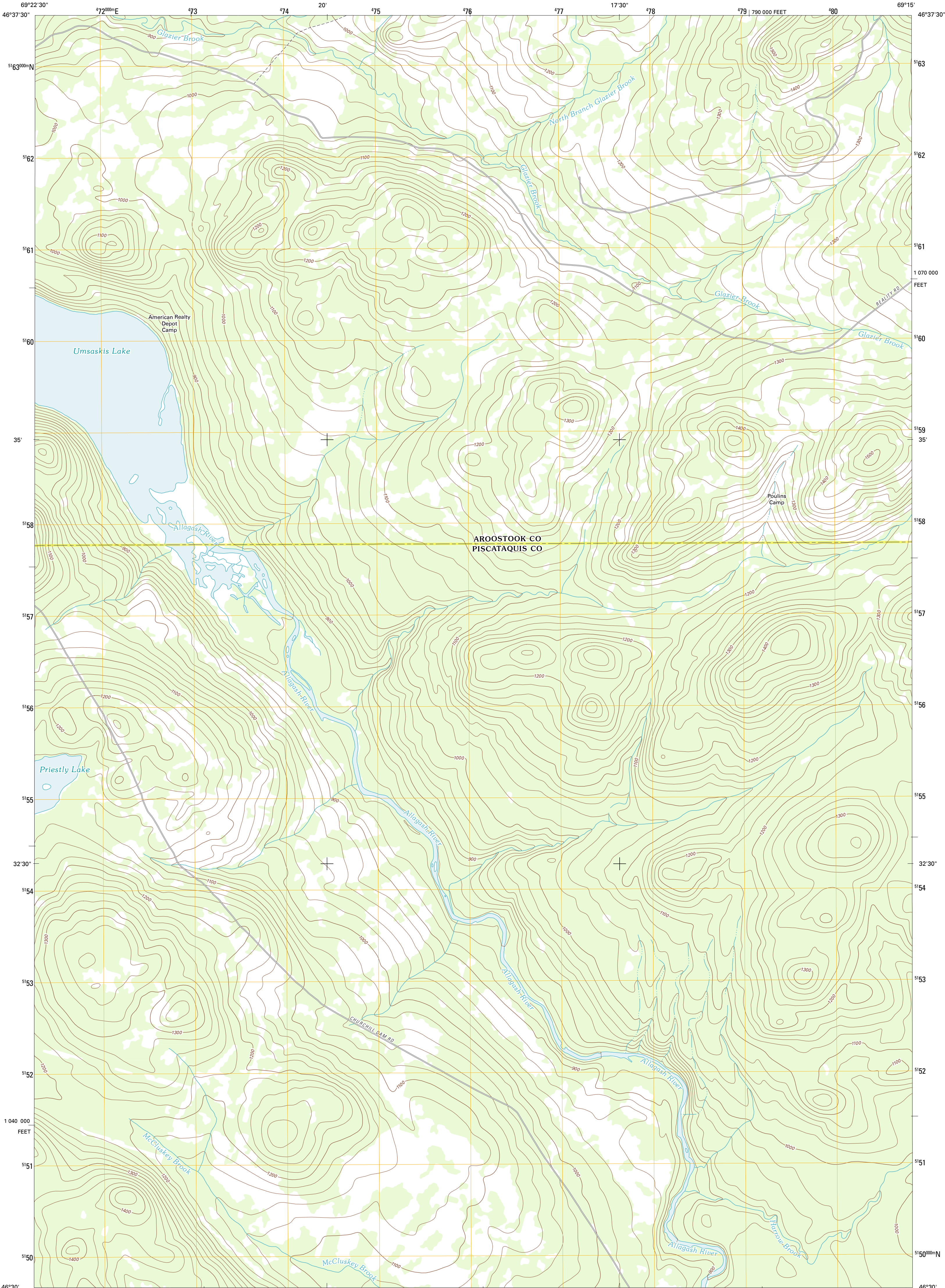




U.S. DEPARTMENT OF THE INTERIOR
U. S. GEOLOGICAL SURVEY

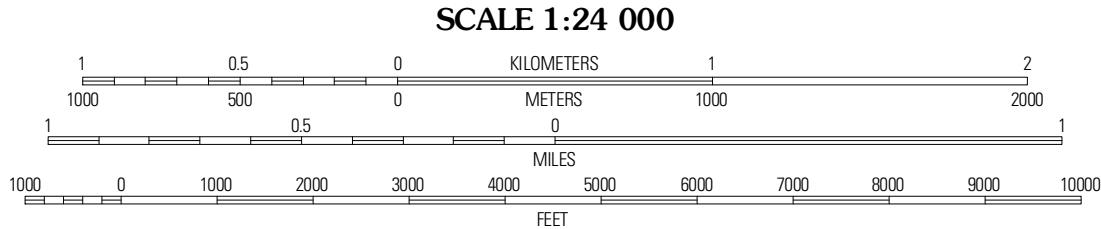
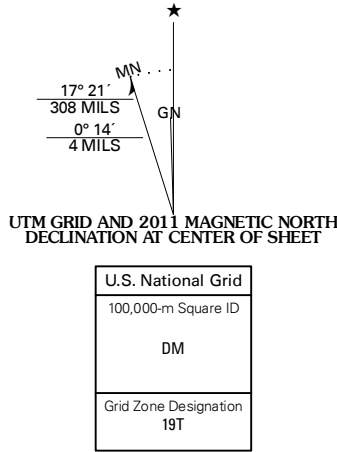


UMSASKIS LAKE EAST QUADRANGLE
MAINE
7.5-MINUTE SERIES



Produced by the United States Geological Survey
North American Datum of 1983 (NAD83)
World Geodetic System of 1984 (WGS84). Projection and
1 000-meter grid: Universal Transverse Mercator, Zone 19T
10 000-foot ticks: Maine Coordinate System of 1983 (east
zone)

Imagery.....NAIP, July 2009
Roads.....©2006-2011 Teri Tom
Names.....GNS, 2011
Hydrography.....National Hydrography Dataset, 2009
Contours.....National Elevation Dataset, 2008
Boundaries.....Census, IBWC, IBC, USGS, 1972 - 2010



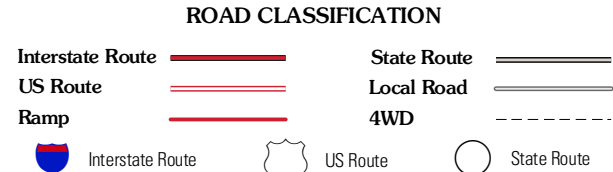
CONTOUR INTERVAL 20 FEET
NORTH AMERICAN VERTICAL DATUM OF 1988
This map was produced to conform with the
National Geospatial Program US Topo Product Standard, 2011.
A metadata file associated with this product is draft version 0.6.0



QUADRANGLE LOCATION

Cadville Lake	Cadville Islands	First Musquacook Lake
Umsaskis Lake West	Umsaskis Lake East	Third Musquacook Lake
Clarkson Pond	Churchill Lake	Spider Lake

ADJOINING 7.5' QUADRANGLES



UMSASKIS LAKE EAST, ME
2011