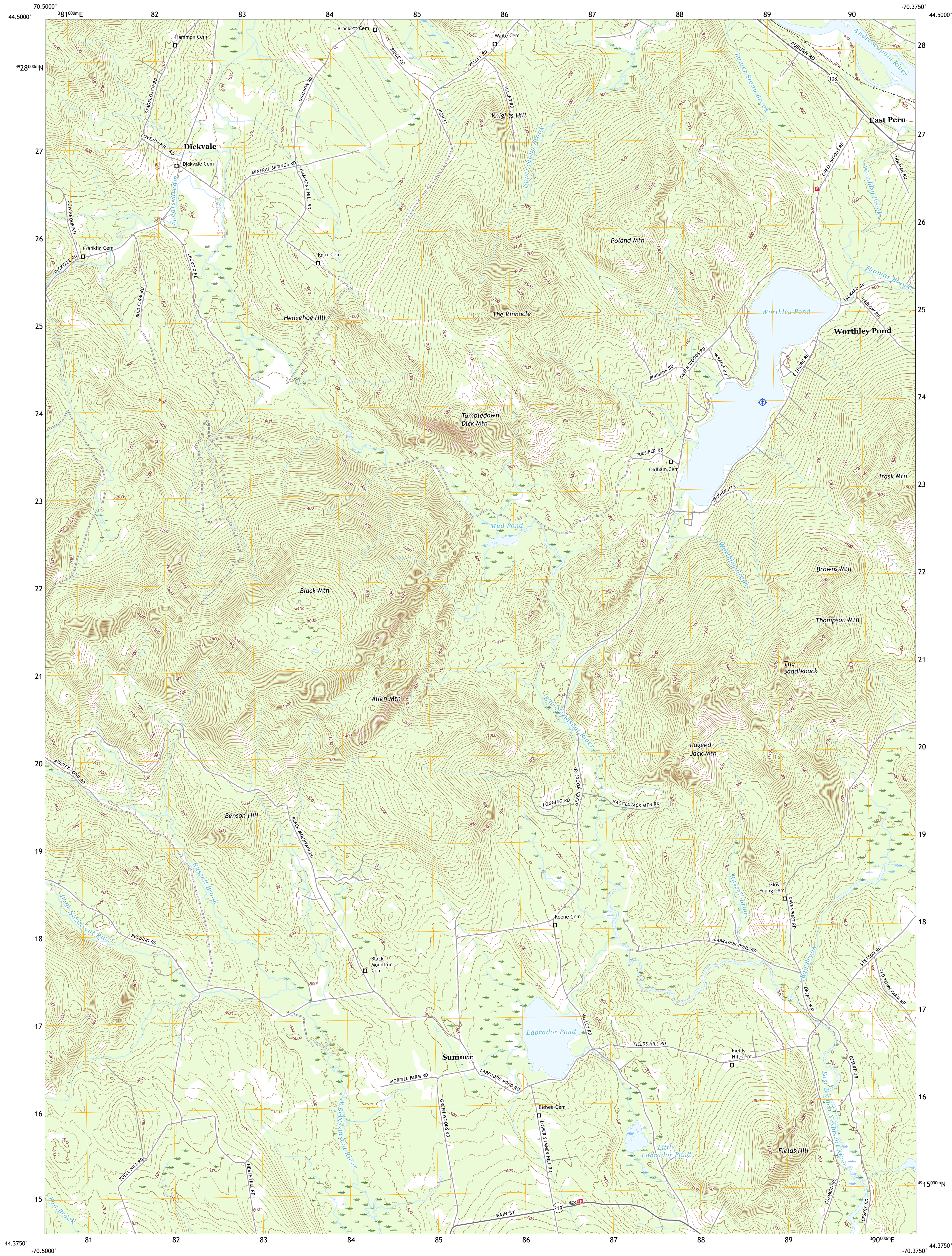




U.S. DEPARTMENT OF THE INTERIOR  
U.S. GEOLOGICAL SURVEY

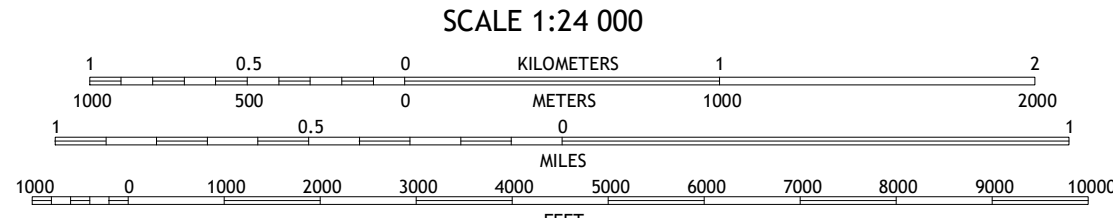
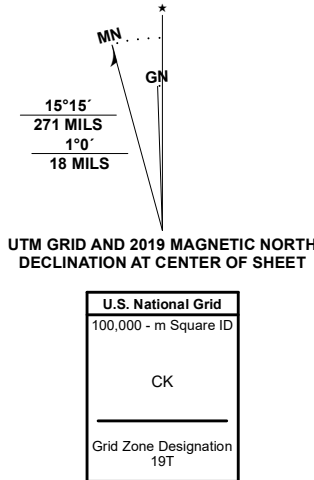


WORTHLEY POND QUADRANGLE  
MAINE - OXFORD COUNTY  
7.5-MINUTE SERIES

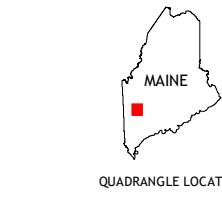


Produced by the United States Geological Survey  
North American Datum of 1983 (NAD83)  
World Geodetic System of 1984 (WGS84). Projection and  
1 000-meter grid/Universal Transverse Mercator, Zone 19T  
This map is not a legal document. Boundaries may be  
generalized for this map scale. Private lands within government  
reservations may not be shown. Obtain permission before  
entering private lands.

Imagery.....	NAIP,	July	2018
Roads.....	U.S. Census Bureau,	2017	
Names.....	GNIS,	1980	2020
Hydrography.....	National Hydrography Dataset,	2003	2018
Contours.....	National Elevation Dataset,	2017	
Boundaries.....	Multiple sources; see metadata file	2018	2019
Wetlands.....	FWS National Wetlands Inventory	1984	1986



CONTOUR INTERVAL 20 FEET  
NORTH AMERICAN VERTICAL DATUM OF 1988  
This map was produced to conform with the  
National Geospatial Program US Topo Product Standard.



1	2	3
4	5	6
7	8	9

ADJOINING QUADRANGLES

1 Rumford  
2 Dixfield  
3 East Dixfield  
4 Mount Zircon  
5 Canton  
6 West Paris  
7 West Sumner  
8 Buckfield

ROAD CLASSIFICATION		
Expressway	Local Connector	
Secondary Hwy	Local Road	
Ramp	4WD	
Interstate Route	US Route	State Route

WORTHLEY POND, ME  
2021

